

# THE MILWAUKEE ROAD INC.

November & December, 1985

Vol. V No. 9& CHICAGO SPECIAL EDITION NEWSLETTER  
10 LABOR MANAGEMENT ACTION GROUP

## RELOCATION MEETINGS

### Accounting Functions to Minneapolis

In line with projected plans, Ms. Susan Leaf, Director Revenue Acctg., and Ms. Cathy Frankenburg, Director Labor Relations, Soo Line, hosted meetings for Milwaukee Road employees the week of November 25, 1985 to discuss the timetable for moving all Milwaukee Road accounting functions to Minneapolis.

It is expected that the move will be completed in its entirety by June of next year. Accounting Departments at Chicago Union Station, Milwaukee, as well as Regional Accounting, will be merged and headquartered at Soo Line building, Minneapolis.

Affected here will be about 150 people, some of whom will make the transition to Minneapolis. The big questions, of course, is, "How am I affected?"

Ms. Leaf and Ms. Frankenburg fielded questions in this regard and said that many pertinent decisions have yet to be determined during meetings the first part of December. At the end of that time, an Implementing Agreement should be complete and in place.

In the meantime, you may call Ms. Leaf Extension 8331 at Minneapolis, with regard to availability of positions, and with other questions you may have.



Cathy Frankenburg



Susan Leaf

Holidays • Merry Christmas • Happy Holidays • Merry Christmas • H

W. F. PLATTENBERGER HONORED AT COFFEE PARTY AT CHICAGO UNION STATION

W. F. Plattenberger, Assistant Vice President-General Manager, was the guest of honor at a coffee party on October 31, marking the date of his retirement from his position here in Chicago and his duties for the Soo Line, Minneapolis as Asst. Vice President-General Manager of the Soo/Milwaukee System. He began that assignment on June 1 and retained his position at Chicago, although most of his time was devoted to the work at Minneapolis.

Friends, family and Milwaukee Road personnel turned out to share in the occasion, some of them from Milwaukee, and other out-of-town locations.

Mr. Plattenberger began his career with the Milwaukee on July 18, 1941 as a Switchman at Savanna, Illinois. In 1963 he was assigned Special Duties in Chicago and in 1965 went to Deer Lodge, Montana as Superintendent.

On March 16, 1976 he was appointed General Manager at Chicago, and on May 1, 1977, he was appointed Assistant Vice President-General Manager, a position which he held until his retirement.

Mr. Plattenberger (Bill), leaves amidst the well wishes of many friends and acquaintances along with their gratitude for his helpfulness and concern for the Milwaukee Road family.



Right to left:  
A. Youhanaie  
W. F. Plattenberger  
N. H. McKeegney  
Unidentified



Right to left:  
Mrs. Plattenberger  
The Plattenberger's son,  
Bruce and his wife.

Right to left:  
Larry Harrington  
Don Kabitzke  
Bill Plattenberger



DICK KLEINFELDT, SR. Senior Accounting Analyst in the Property Accounting office, retired on October 30, 1985.

He began his railroad career in 1948 with the CB&Q Railroad, and came to the Milwaukee Road in 1971; thus accumulating 37 years of railroad service.

After a planned golf outing in Myrtle Beach, South Carolina, he plans to enjoy his future with his many friends and family in Aurora, Illinois.

by Wilma Hoffman



Dick Kleinfeldt, Sr.



Tom Power

Rick Grimes

Marion Grajek

Sharon VanPuyenbroeck

Manager, General Disbursements & Billing

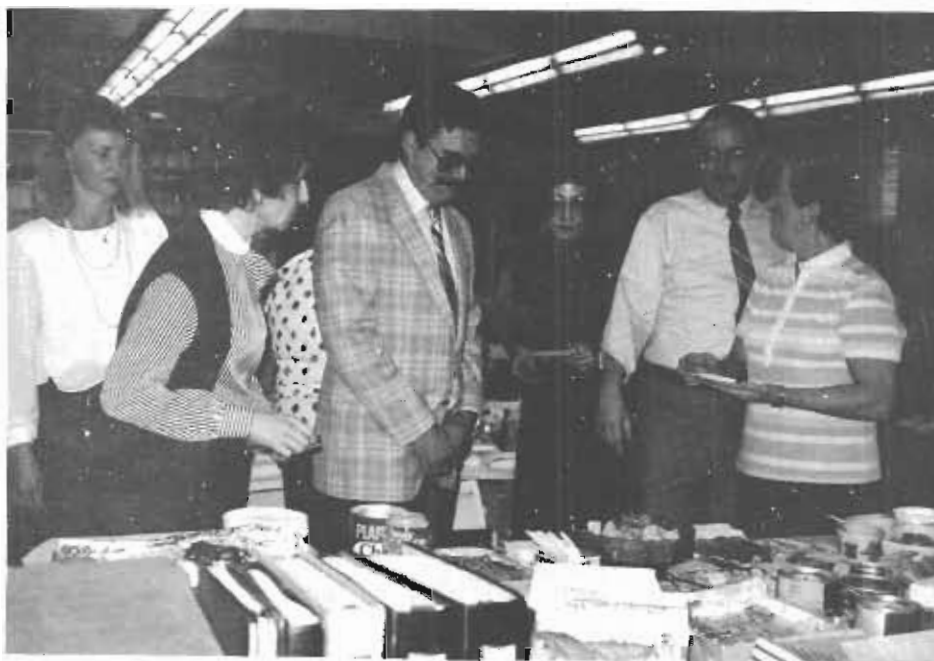
Congratulations to Ann Thomas on her promotion. Ann was offered a position with the Soo, up in Winter Wonderland (Minneapolis, Minnesota). Ann will be working in the office of Property Accounting.

Ann started with the Milwaukee Road on September 8, 1955. Ann migrated from Upper Michigan to Chicago back in 1955. She worked in the Billing Department for at least 28 of the 30 years of loyal service to the Milwaukee Road.

On November 8, Ann's friends threw her a party, located in the Manager-General Disbursements & Billing office, wishing her Best Wishes on her new adventure.

Ann will be missed by all of her Milwaukee Road friends.

G. G. Bayless  
Asst. Mgr.-Billing



L to R:

Nancy Czarnecki, Melody Zebb, Ron Netter,  
Bernice Sugarman, Bob Yurschak, Ann Thomas

Kay Gunder

Kay has served the Railroad in numerous capacities over the past fourteen years. She has contributed in the Marketing, Equipment Accounting, Freight Claims, Communication and Key Punch centers. Prior to Kay's employment with the Milwaukee, she was employed by Penn Central.

While Kay is not of retirement age, she has decided to research other business opportunities that have interested her for some time.

We wish Kay and her husband, Gary Gunder, a former Milwaukee Marketing official, great success in their new ventures.

by Larry Fancher  
Manager-Commerce Pricing Services



Frank Rademsky, Manager, Operating Administration, also took retirement, and is pictured with persons formerly under his employe in Joint Facilities.  
L to R: Mike Foy, Frank Rademsky, Jackie Superson, Jim Snider, Leon Gawron.



Open House was held in Room 256 for Jane Kot, Secretary to G. G. Grudnowski, Secretary/Director of Insurance



# EMPLOYEES WHO TOOK THE OCTOBER 15TH BUYOUT

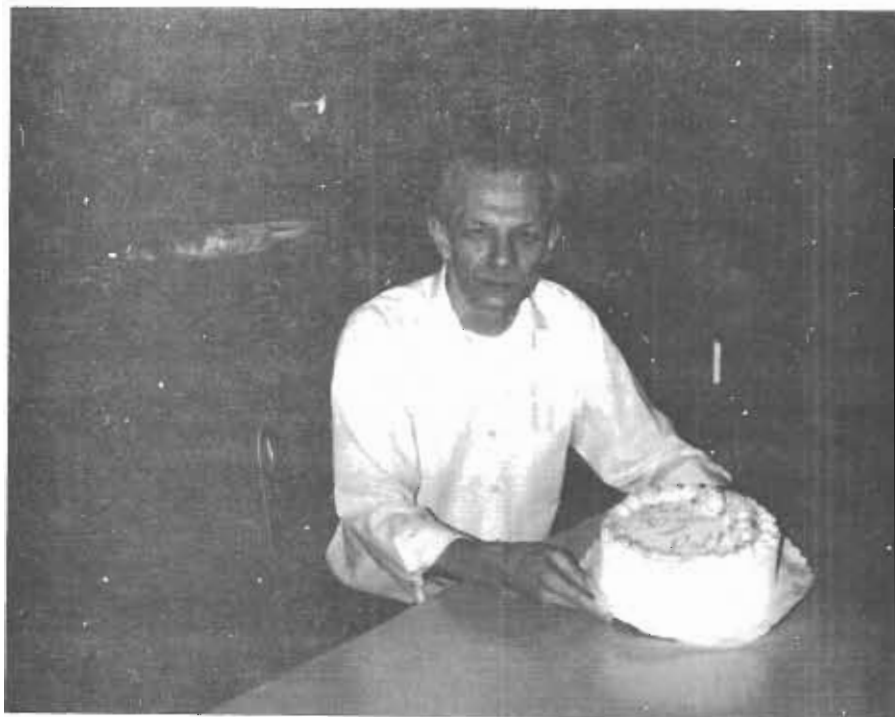
B. J. Aksamitowski  
V. M. Anderson  
R. R. Behling  
R. M. Behrendt  
C. R. Bell  
R. E. Bennett  
R. M. Benton  
J. H. Bolitho  
L. Bryant  
H. J. Buffington  
T. E. Campbell  
K. A. Capoccia  
J. Chavarria  
L. L. Clark  
V. Connie  
B. M. Cornwell  
J. M. Cortese  
A. J. Cynova  
W. G. Czeskleba  
R. Davis  
D. T. De Gidio  
H. K. Desantis  
C. E. Dora  
K. D. Duhart  
J. H. Easton  
V. F. Fairchild  
L. E. Fancher  
G. U. Fisher  
M. E. Fittanto  
L. D. Flores  
D. L. Friese  
R. E. Fronczak  
D. M. Gannon  
M. L. Gilson  
J. W. Greene  
I. M. Gruszecki  
C. R. Gunder  
R. J. Hall  
S. K. Hansen  
R. D. Hickie  
R. L. Hicks, Jr.  
M. A. Hohlman  
K. A. Janeczko  
R. W. Janssen  
J. F. Juarez

J. E. Keene  
J. M. Kelly  
E. Kirschenbaum  
R. P. Kleinfieldt  
C. L. Koenig  
N. J. Kohn  
P. J. Kopeny  
J. E. Kot  
J. R. Kott  
W. Kung  
S. L. Labanauskas  
G. M. Lodydowski  
R. D. Lutes  
J. Marcheschi  
C. E. Martinson  
D. J. Mazar  
S. N. Moore  
M. G. Mulhollon  
R. D. Nelson  
L. J. O'Rourke  
S. J. Penczak  
S. L. Penczak  
A. A. Pollath  
T. F. Power  
F. M. Rademsky  
G. J. Reingruber  
J. L. Sa'id  
J. G. Schmidt, Jr.  
E. M. Schuble  
S. L. Seivert  
R. M. Shoffner  
D. G. Sirtak  
R. J. Skalski  
C. B. Smith  
J. L. Staffeldt  
F. J. Starzec  
A. A. Strong  
D. K. Stroot  
I. M. Sturges  
M. H. Westerfield  
J. C. Wright  
R. J. Wright  
J. R. Zeffield

Congratulations are in order for Bob Myzia of Revenue Accounting who celebrated 30 years with The Milwaukee Road. He has held various positions with the company such as Rate Clerk, Claim Investigator, and his current position, Chief File Clerk.

Bob's dedication is reflected in his flawless record of 30 years without a personal day or sick leave. His expertise was expressed by his Bureau Head Tom Puttrich " Bob is a very loyal employee who has saved the company millions of dollars through analyzing claims."

Keep up the good work Bob!



PICTURED:

BOB MYZIA honored with coffee and cake party hosted by co-workers on 30 year anniversary with the Milwaukee R.R.

Story By:  
Gloria Wray

## WHAT'S HAPPENING

IT'S A BOY!.....Michael Ryan Wuerl, 6# 12 oz., born 11/11/85, 9:02 AM, West Allis Memorial HOsptial, to Christopher and Sherry Wuerl. Proud GRANDPARENTS, Joe and Florence Wuerl welcomed their sixth grandchild, while anticipating the birth of number seven due in December. Grandpa Joe, the father of eight, is an Asst. Cashier, Customer Accounts, Milwaukee, Wi.

SUGAR AND SPICE.....Congratulations to Chuck and Linda Verdak on the birth of their daughter, Tara, on 10/30/85, 7# 4 oz. Tara makes three for the Verdak's, as she is welcomed home by big sisters, Holly 5 and Heather 21 months. Mother Linda works in the Material Division at Bensenville.

Pat Feeney, Senior Accounting Analyst, Equipment Accounting reports his lovely wife, Denyse, a professional model and actress, will be featured as a nurse in an upcoming episode of Lady Blue. Stay tuned for actual air time.

WEDDING BELLS...rang for Ronald Eppley, Manager of Car Scope CUS, and Juanita Balanoff, Supervisor of Key Punch Operations CUS, on June 17, 1985 in Mountain Home, Arkansas. Ralph and Charlotte Poor were attendants at the ceremony. Friends will remember Ralph, former Milwaukee employee, as the retired Manager of Car Scope. Ron and Juanita are making their new home in Elgin, Il. The newlyweds enjoyed Arkansas to the extent they have since returned for a second honeymoon.



MR. & MRS. RONALD E. EPPLEY

## HAPPENINGS

### GOODBYE AND GOOD LUCK TO:

Maryhelen Baniewicz, Field Engineer, Bensenville, who recently left the employ of the Company, to join husband Robert in Dallas, Texas. Maryhelen a 10 year employee plans on returning to the work force after the Holidays, in her new community.

FROM THE PERSONNEL OFFICE, CUS.....Darlene Friese, Manager of Placement Services, recently left after 15 years of service. Darlene's plans include marriage in the Spring of 1986.

CALIFORNIA BOUND...C. R. (Dick) Raveling, Assistant V.P. Personnel, CUS, left the employ of the Company in December, 1985. Dick's career spanned 27 years with the Company.

TRANSFERS FOR....Gerri Peters, Manager Compensation and Relocation, CUS, effective 12/09/85, to the Soo Line Building, Minneapolis, Mn. AND..Kevin Newton, Manager Benefits Administration, CUS, to the Soo Line Building, Minneapolis, Mn., effective November of 1985.

NEW BEGINNINGS FOR.....Tom Pawlicki, former Director Car Productivity, CUS. Tom's last day December 1, 1985, coincided with plans for a short vacation with Wife Marti, and an opportunity to welcome new baby BOY, Michael Thomas Pawlicki.

Any Happenings in your Department?  
Contact Nyla Gallipo, Ext. 3058, Room 318, CUS.

---

HIAWATHA CENTENNIAL MARCH score.....a mystery. We have been unable to determine the occasion or events associated with the birth of this tribute to the Milwaukee Road Hiawatha fleet.

Please contact Gloria Wray, Room 318, Chicago Union Station, if you have any information at all regarding the musicians responsible for the music and lyrics, the affair for which it was apparently cued, and if there was a special celebration honoring the Hiawathas.

---

Bright march tempo

The piano introduction consists of two staves. The right hand features a lively melody with eighth and sixteenth notes, while the left hand provides a steady bass line. Dynamics include *mf* and *mp* with a crescendo hairpin.

①

Chords: Eb, Bb7, Eb, Eb7, Ab, Eb, Eb7

One day in Eigh - teen Fif - ty An iron horse chugged a - long, En -

The vocal melody is in the right hand, and the piano accompaniment is in the left hand. The tempo is marked *mp*.

Chords: Ab, Eb, C7, Fm, Fm7, Bb7, Eb

route to Wau - wa - to - sa Be - fore a cheer - ing throng: "Hur -

The piano accompaniment continues with a steady bass line, supporting the vocal melody.

Chords: Eb, Bb7, Eb, Eb7, Ab, Eb, Eb7

rah, we're on the rail - road!" The smart folks all did say, But

The piano accompaniment continues with a steady bass line, supporting the vocal melody.

Chords: Ab, Eb, Ab, Abm, Eb, Bb7, Eb

oth - ers scoffed and said "the dog - gonned thing ain't here to stay!"

The piano accompaniment continues with a steady bass line, supporting the vocal melody.

Bb7 Eb7 Ab

A°

Eb

With a' chug-chug-chug and a toot-toot-toot the en-gine puffed and

C7

Fm

Fm7

Bb7

Eb

Bb7 Eb7

steamed, And the wheels in rhy-thm churned to pull the load. With a

Ab

A°

Eb

C7

click-click-click and a clack-clack-clack she rolled to 'To-sa Town; Num-ber

Fm

Fm7

Bb7

Bb+5

Eb

Eb7

Eb6

Eb7

One of the new Mil-wau-kee Road.

TRIO

Ab

Eb7

Ab

B°

Bbm7

Eb7

A°

Eb7

Bbm7

Eb7

A°

Mil-wau-kee trains flash all down the line, Al-ways on

*mf-f*

Eb7

Ab B°

Ab

Ab7

F7

Bbm

ached - ule come rain or shine. They speed us safe - ly where-e'er we're

Bbm

Eb

Bbm

A°

Eb7

bound; In - to Chi - ca - go or on to Pu - get Sound.

Ab

Eb7

Ab

B°

Bbm7

Eb7

A°

Eb7

Bbm7

Eb7

A°

Eb7

They race a - long on rib-bons of steel, Span-ning the miles with

Ab

B°

Ab

Ab7

F7

Bbm

Dbm6

sev - en league wheel. In peace or war these speed-lin - ers roll 'Til they

Ab

F7

Bbm

Eb7

TO RECALL

Ab

FINE

Ab

Bbm7

Dbm7

Ab

reach the fin - al goal. goal.

# RECALL

C7 Db7 C7 Db7 C7

They haul corn from Hawk-eye and wheat from A-ber-

*mp*

Fm C7 Fm7 Bb7 B7 Bb7 B7

deen, And it's sheep from round-up and

Bb7 Eb Db

logs from Coeur d' - Alene: Se - at - tle, Wash. and

C7 Fm Fm7 F7

Green Bay, Wis. and Min - ne - ap - 'lis, too, The

Bbm F7 Bbm Eb7

Hi - a - wa - tha fleet of trains is wait - ing just for you.

*D.S. Trio al*

*D.S. Trio al*

-15-

A "Jean Wals Arrangement"



## Medical Newsletter

### Blood Transfusion and AIDS: The Facts

Blood transfusions, one of medicine's most powerful tools, have recently come under suspicion as one means by which the dreaded disease AIDS is transmitted. Is the worry warranted?? Certainly you can't get AIDS by giving blood, because a new sterile needle is used for each donor. Although AIDS can be contracted by receiving blood transfusions a new test is now being used on all donated blood. This test checks for the presence of antibodies to the AIDS virus and any blood with a positive reading is discarded.

### Children and Diarrhea

If a child has an intestinal virus with severe diarrhea, should he eat solid foods, clear liquids or nothing at all? Twenty years ago, pediatricians as a rule advised letting the bowel rest for 24 to 48 hours, then reintroducing foods slowly over the next few days.

But William Klish, M.D., head of pediatric gastroenterology at Baylor University advises against this starvation theory. Dr. Klish states, "Avoid undiluted fruit juices. They prolong vomiting and apple juice can promote diarrhea. Yogurt is a good food for these children. Recommended solid foods are bananas, rice cereal, applesauce and toast."

### Tired Eyes?

Your eyes are tough and with regular care they'll last a lifetime, says Dr. Daniels Runyan of the American Optometric Association. What most of us refer to as "overuse" is simply muscle strain. We squint because we haven't got the right glasses or we're reading in poor light. Dr. Runyan likens this to what happens when a camera is out of focus: The picture may be blurred, but the camera won't be harmed. However, long periods of close-up work-reading or working on a home computer, for example, may cause near sightedness. This theory states eye muscles may have trouble relaxing to focus clearly on distant objects. It makes good sense to give your eyes a break: Don't read, sew or watch T.V. in a dark room; when reading or doing other close-up work, frequently gaze into the distance to relax eye muscles; and if you read in bed, hold the book at least 18 inches from your nose.

### APOLOGIES

We extend our apologies to Dee Winterlin and her family for the error in our September/October issue.

Reprinted is the picture with corrected identification, which should read:

Left to right -  
D. J. Winterlin (Dee), Director Administration-NOP  
Dee's brother - Father Winterlin, Dee's mother - Mrs.  
Winterlin, and Ms. Munford.



### RECUPERATING

Our best wishes to John Dennison of General Disbursements and Billing, who underwent surgery on November 15, 1985 and has now returned to his home. We wish him a speedy recovery.

---



OFFICE OF SOCIAL COUNSELING  
BOB HICKLE, DIRECTOR

1307 SECOND AVENUE  
SOUTHWEST

WAVERLY, IOWA 50677  
PHONE 319-352-5272

I have become acquainted with many of you through these newsletters, and some of you have told me that you have saved them all. For those things I am grateful. Sometimes, however, it is well to back over some of the important things we have discussed in the past. Some things can't be said too often!

The Employee Assistance Program on the Milwaukee Road is available to all employees and their families at no cost. We furnish professional, confidential counseling to anyone who contacts us. While about sixty per cent of those who contact us have problems with alcohol, we will discuss any problem you wish, and will not talk to anyone else about it without your permission.

Since our number one problem is alcohol, let's talk a moment about the disease we call alcoholism. I don't know if anyone else uses these three diagnostic clues, but I do. If you or someone you care about has a problem which is described by one or more of these three things, give us a call. We'll talk about it.

- (1) Does alcohol cause problems in any major area of your life - family, job, health, finances, self-respect, police, friendships?
- (2) Do you undergo a personality change when you drink? Remember Dr. Jekyll and Mr. Hyde.
- (3) Do you drink more than you intend to? Do you tie up after work or go to a party with the intention of having a couple, and have a couple of dozen?

There are many more clues, but these are enough. If you say yes to even one of them, you are either in trouble or heading for trouble. There are ways out, and you don't have to follow the course of pain and sorrow and distress to death--give us a call, and we'll discuss the matter. I can't guarantee that things will get better if you do something, but I can guarantee that things will get worse if you don't!

---

Bob Hickle  
1307 2nd Ave. SW  
Waverly, IA 50677  
Phone: (319) 352-5272

Gary Bloker  
600 East Higgins Road  
Elk Grove Village, IL 60007  
Phone: (312) 228-0606 (312) 648-3860

8626A W. Greenfield Avenue  
Milwaukee, WI 53214  
Phone: (414) 475-6757  
Through Company Lines: 8227 at Milwaukee

"It was the best of times, it was the worst of times". Dickens perfectly expressed the general attitude prevailing in Union Station these days. It seems that the Chicago Union Station's days are numbered. While sad on one hand, it's like the closing of a door, it's exciting on the other - the opening of another door - a new beginning. While some persons have been permanently assigned in Minneapolis, others are still awaiting their fate, and others have elected to retire, or leave the railroad in search of greener pastures. In the past few months, we've bid farewell to many coworkers. In the back of many of our minds we've wondered if we will ever see that person again, therefore, I had an inspiration that may work.

My idea is to have a Chicago Union Station Reunion. A volunteer from each office could be on the Reunion Committee. Each Reunion Committee Member could then ask all his/ her fellow workers to give the committee member a self-addressed, stamped envelope. We would ask for the envelope because I'm sure the committee will consist of only a few members, and the cost of postage or phone calls would be astronomical. So that we do not overlook the employees who have already left, perhaps their friends could turn in an envelope for them or contact that person. Over the next several months, the committee could meet and develop the reunion plan. When the reunion details are finalized, the committee will then mail the information to everyone.

If anyone is interested in becoming a committee member, please contact me BY MAIL ONLY.

Kitty Capoccia  
Room 224  
Chicago Union Station

# "Joy to the World"



Kemma Johnson  
Newsletter Editor  
Room 224  
Chicago Union Station

---

Holidays • Merry Christmas • Happy Holidays • Merry Christmas • Hap