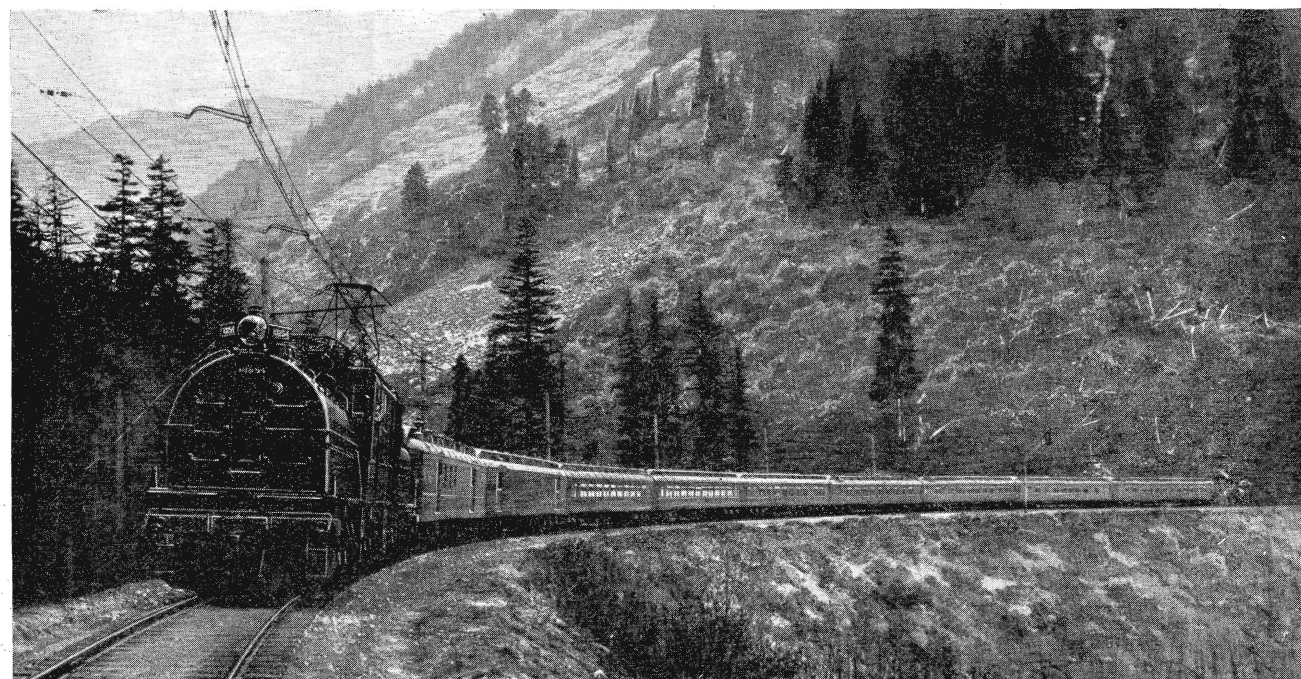


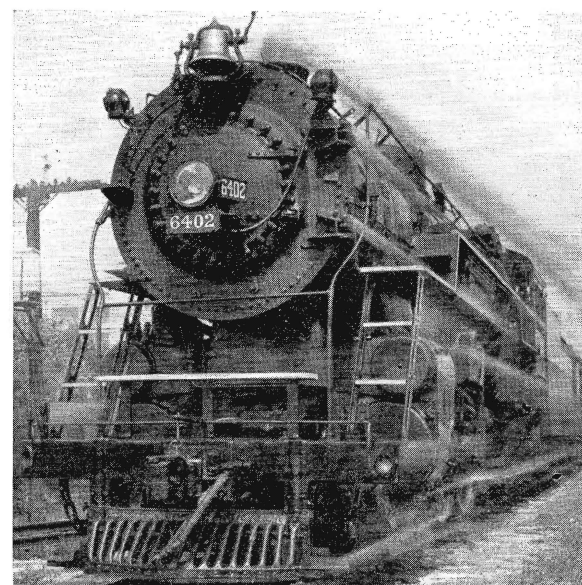


# The MILWAUKEE ROAD



The "OLYMPIAN" in the Cascades

Across four mountain ranges—the Rockies, Belts, Bitter Roots and Cascades—The Milwaukee Road is electrified. Giant electric motors pull the freight and passenger trains over 440 miles from Harlowton, Montana, to Avery, Idaho, and 216 miles from Otello, Washington, to Tacoma and Seattle.



Locomotive 6402 which, on July 20, 1934, established a new record for long distance sustained speed, averaging 92.07 miles per hour for 53.6 miles between Deerfield, Ill. and Lake, Wis., with a regular train. The entire 85-mile run, Chicago to Milwaukee, was made in 67 minutes and 35 seconds.

The first rail of the great system now known as The Milwaukee Road was laid in Wisconsin in 1850, when there were less than one hundred miles of railroad west of the Great Lakes and the lower Mississippi River.

Today this Railroad's 11,200 miles of road in twelve states between Indiana and the north Pacific Coast directly serve about one-third of the residents of those states.

Progressive always, the Milwaukee Road has been a pioneer in developing and perfecting ways to better serve shippers and travelers.

Outstanding among its achievements is the electrification of 656 miles of its main line over four mountain ranges, affording its patrons the world's longest continuous electrified ride.

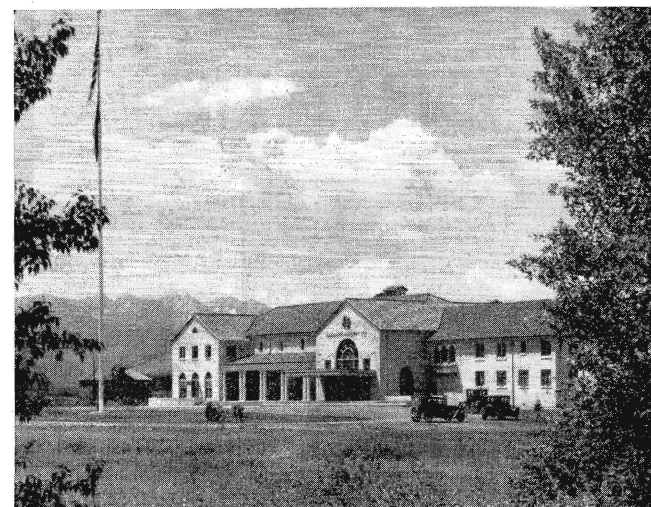
This railroad was the first to apply roller bearings to complete, long-distance trains, fully equipping its Pioneer Limited trains between Chicago and Minnesota's Twin Cities, and its Olympian trains between Chicago and Seattle-Tacoma.

Recently the Milwaukee Road established 90-minute service for the 85-mile run between Chicago and Milwaukee, the fastest service in this country between important terminals.

This system long has been famous for the excellence of its equipment. This year it has built fifty new type, light weight, welded coaches especially designed for the comfort and convenience of travelers, and has plans for other improvements to meet public demands.

Since last July the Milwaukee Road has held the world's record for sustained speed by steam power, having run a distance of 53.6 miles with a regular train at an average speed of 92 miles per hour.

The Milwaukee Road is eager to continue its expenditures for the benefit of its patrons but is handicapped because of the depression and the inroads of highway and waterway agencies that are aided in obtaining business by the fact that they enjoy unfair competitive advantages in subsidies and in comparative freedom from regulation.

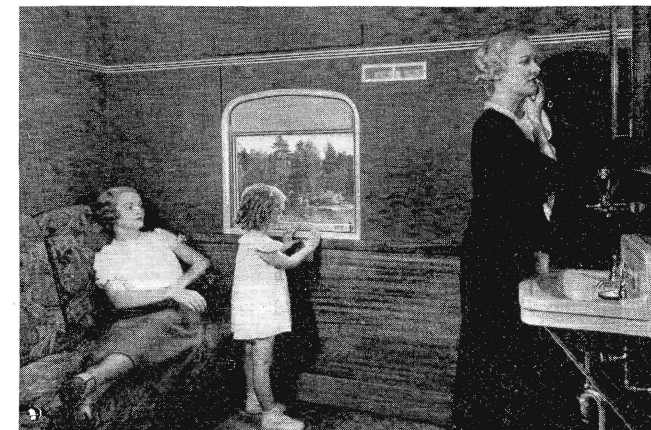


Gallatin Gateway Inn

The Milwaukee Road's palatial hotel at Gallatin Gateway entrance to Yellowstone National Park.

With revenues about half the volume of normal years, it has been necessary for the railroad to reduce employment and payrolls and purchases about in proportion. This has adversely affected the business houses patronized by rail employees in all communities served and has reduced employment in industries from which the railroad obtains its equipment, materials and supplies.

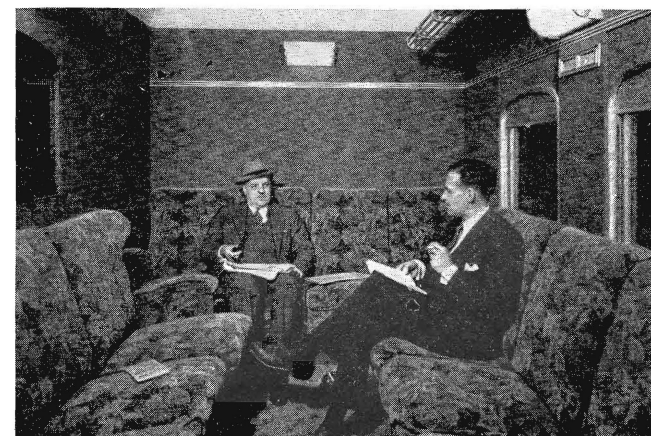
The Milwaukee Road has no quarrel with fair competition and it is hopeful that the consideration now being given the entire transportation situation by the government will develop a plan that will eliminate unfair advantages, thus aiding the railroads and all those directly and indirectly dependent upon the railroads for support.



The women's lounge has full length davenport—seats for five; but as far as space is concerned five is not company nor ten a crowd. There is no type of car, regardless of travel cost, where ladies are provided for more thoughtfully.



The overstuffed seats are wider than standard. By means of a lever in the arm of the chair the backs may be individually adjusted to accommodate the passenger in four different postures—from normal to semi-reclining position.



Convenience as well as comfort is provided in the men's room. Porcelain lavatory fixtures; hot and cold water; sanitary towels. Three overstuffed davenports seating ten.