

INSPECTION TRIP  
December 5-10, 1976



Chicago, IL to St.Paul, MN  
AMTRAK No. 9

St.Paul, MN to Seattle, WA  
Freight No. 201 C-5

Seattle, WA to Portland OR  
Rail and Highway Tour

Chicago - December 15, 1976.

Mr. William J. Quinn:-

Attached please find a copy of the inspection trip we made Chicago to Tacoma, December 5th - 9th, 1976.

I am also attaching copy of a print of Tacoma, Washington, and the Port of Tacoma relationship to Fife Yard; and a detailed print of the Fife Yard area; a detailed print of Tacoma Tide Flats Yard; and a map showing all the points we inspected between the BN Interbay Yard, Seattle, and Tacoma.

Att.

ORIGINAL SIGNED  
L. V. ANDERSON

cc - Messrs.

J. Auerbach  
Thos. H. Ploss  
Ms. Isabel H. Benham

Automobile Inspection Trip

12/9/76	W. J. Quinn	Q. W. Torpin
	J. Auerbach	T. H. Ploss
	I. H. Benham	L. V. Anderson
	M. Garelick	H. J. Mitcham
	R. V. Nugent, Jr.	J. W. Stuckey
	E. J. Stoll	

Interbay (Balmer Yard) Seattle

Pier 91	Navy Pier
89	BN Auto loading facility
86	Cargill Grain Terminal
35	Proposed location MILW barge landing
27	MILW barge landing

MILW Whatcom Yard  
MILW Freight House  
MILW Piggy Back Strip  
MILW Stacy Street Yard

Sears, Roebuck & Company

UP Argo Yard and interchange tracks  
MILW-UP Andover Industrial District

Kent Frigidare Warehouse Building  
Kent TSD Auto Unloading Facility  
Kent Convoy Auto Unloading Facility

Fife - toured new yard construction area

Tacoma - MILW Port Interchange Tracks

Lunch: Johnny's Dock

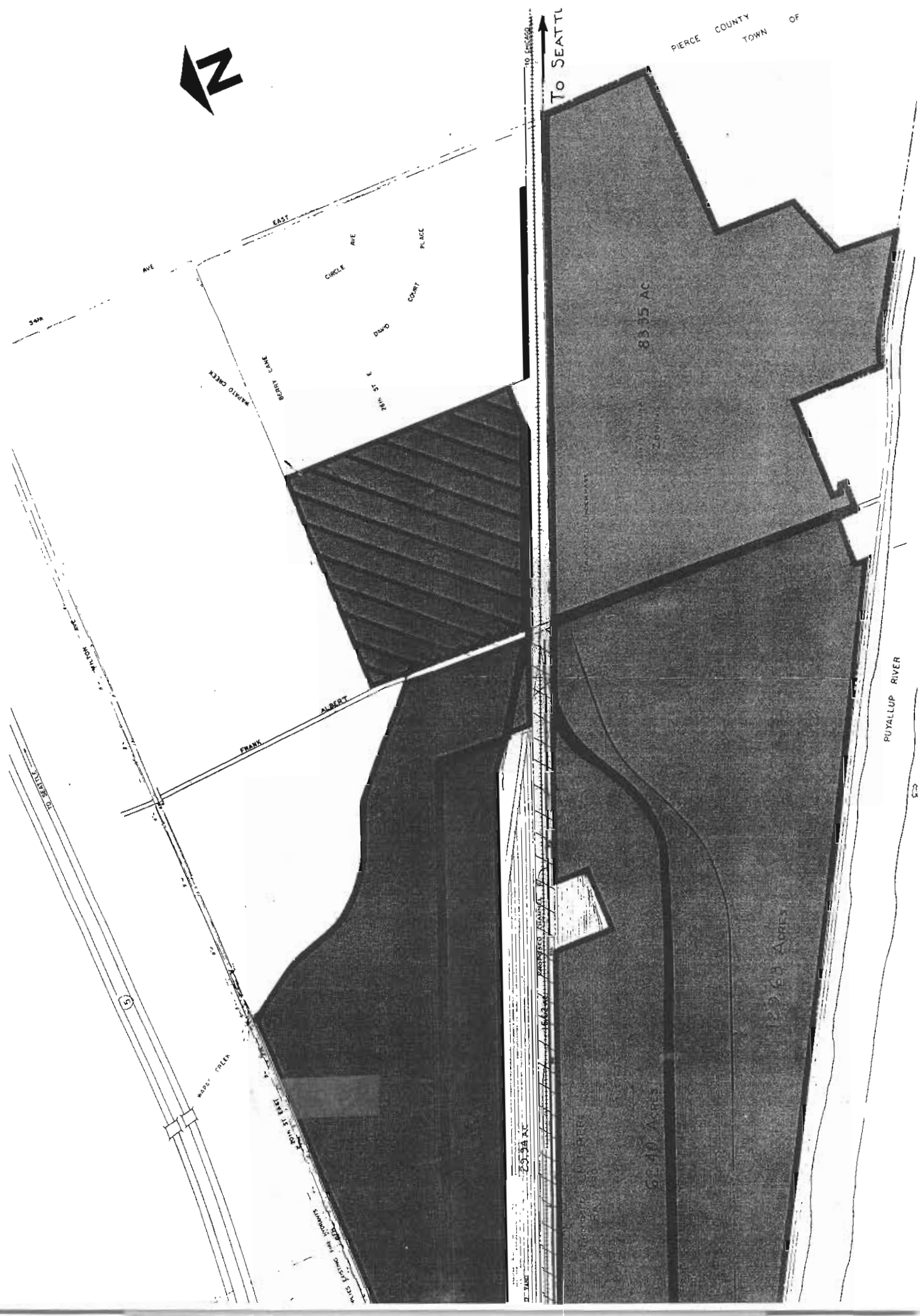
Party joined by: Dick Smith - GM Port of Tacoma  
Bob Everly - Chairman - Port Comm.  
Jack Fabulich - Commissioner

Tacoma - Tide Flats Yard  
Continental Elevator  
Division Manager's Office at "D" Street

Auburn - BN Yard

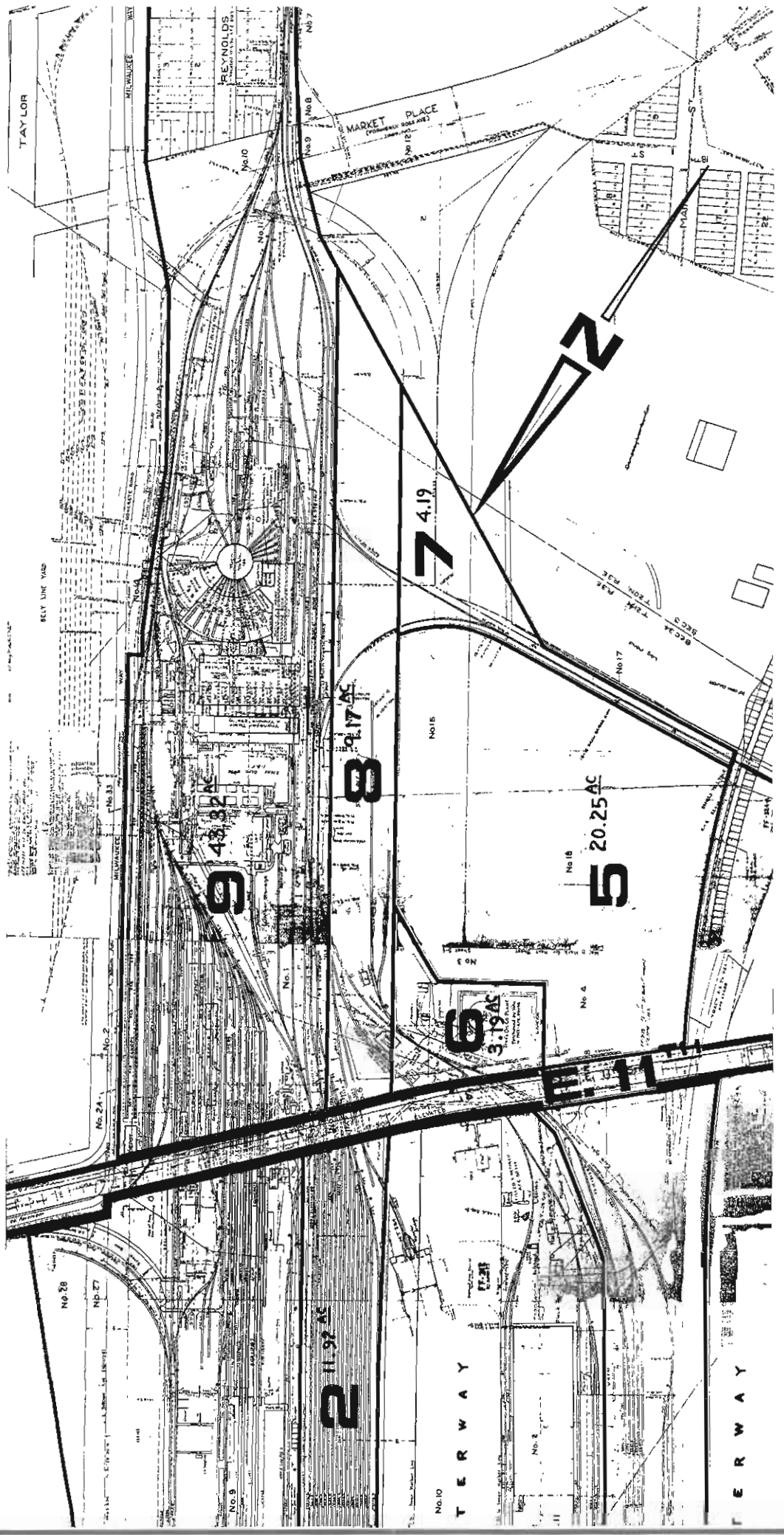
Black River Jct.

# FIFE

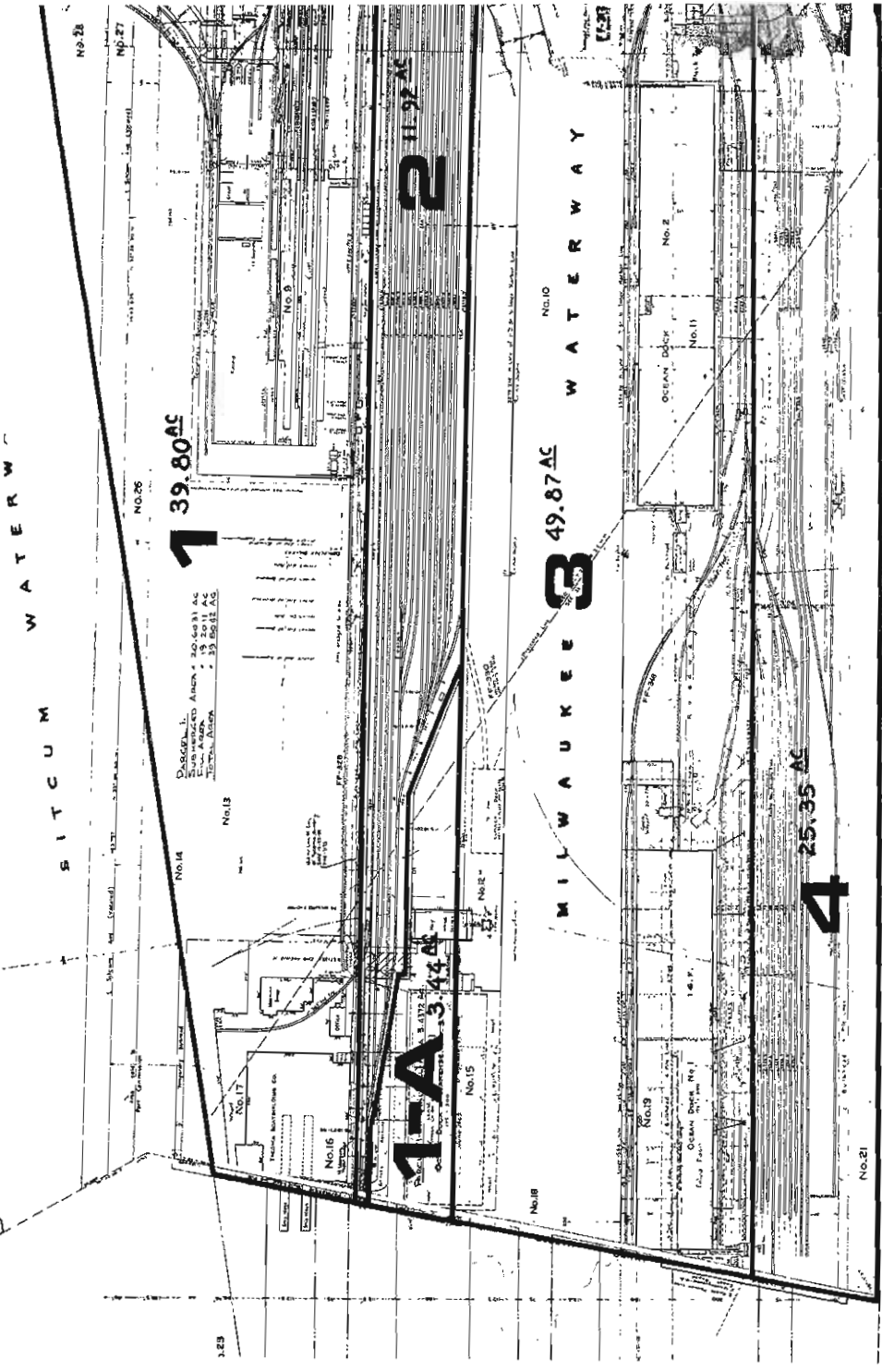




# MA TIDE LANDS



# TACOMA 7



# PUYALLUP WATERWAY