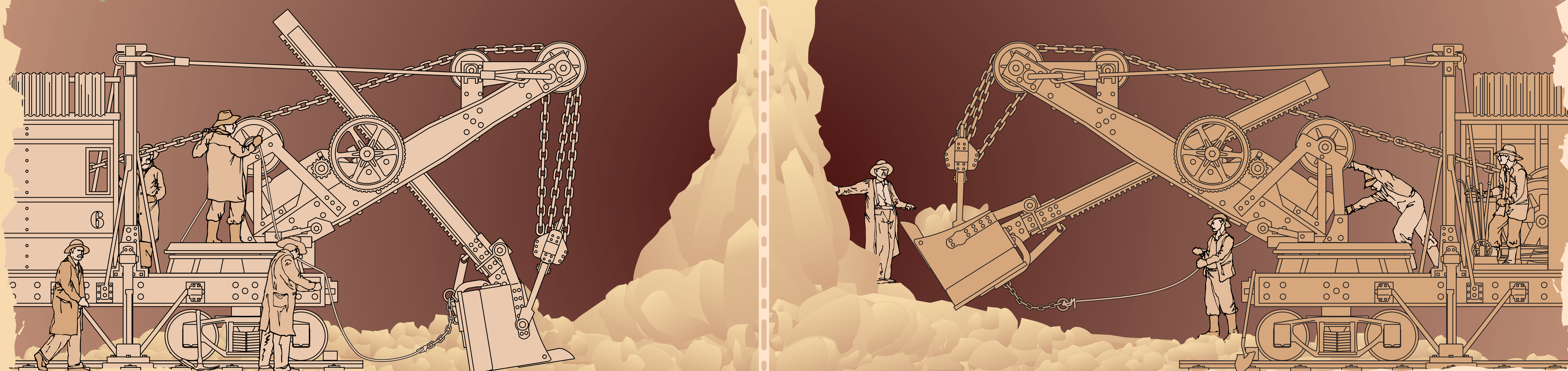


THE CHICAGO MILWAUKEE & PUGET SOUND RAILWAY

Race to the Middle

CHICAGO MILWAUKEE AND ST. PAUL RAILWAY



The drive to complete this tunnel as fast as possible sparked competition to see which tunnel crew, Montana or Idaho, would break through first.

The Idaho crew punched through, winning the race when the tunnel headings were connected on March 1, 1909. Amazingly the tunnel alignment was within a fraction of an inch. Two Marion

steam shovels completed the job three days later. The first train, a work train, chugged through on March 7, 1909.

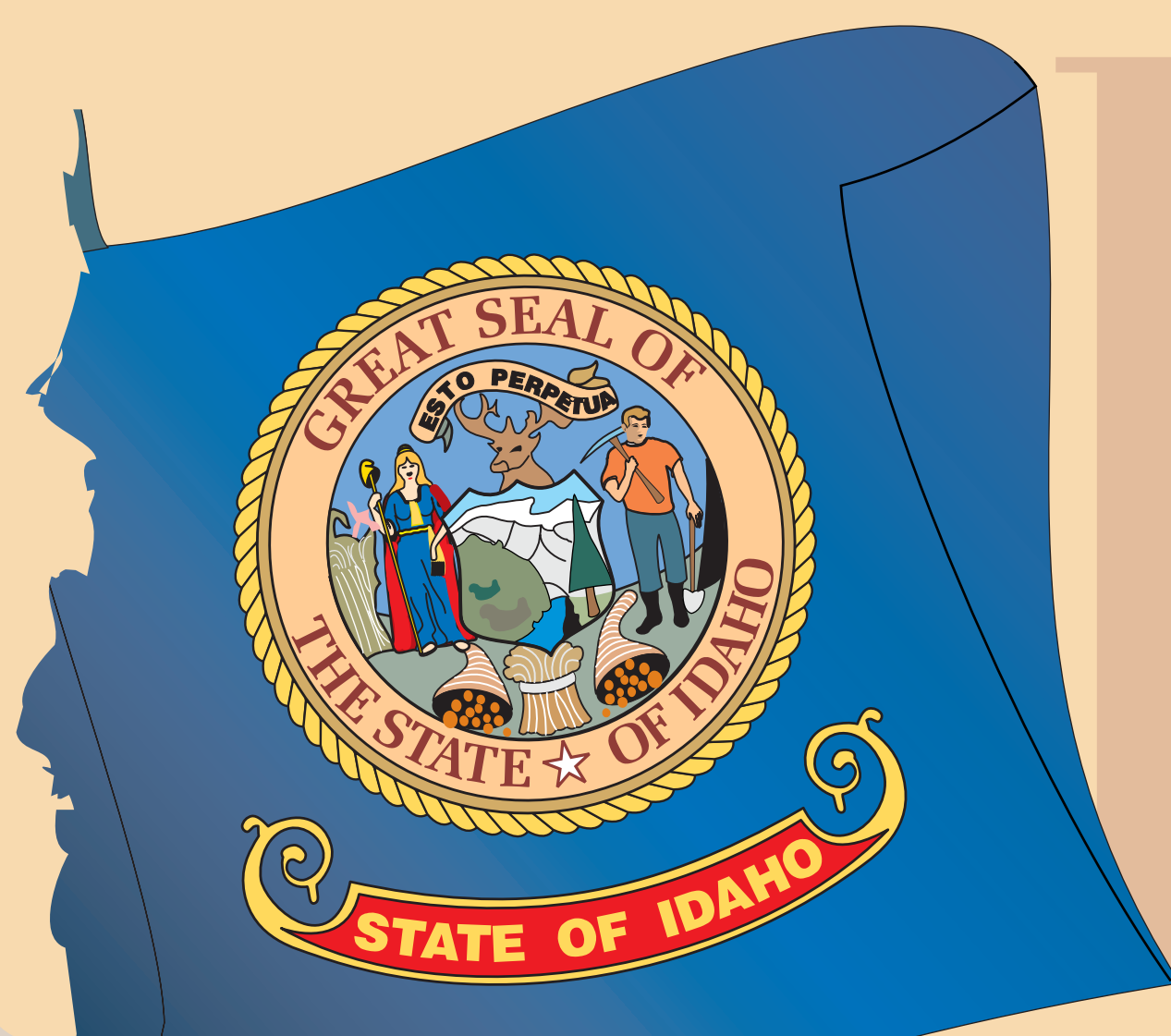


March 4, 1909 the meeting of the two steam shovels.



Drills pose quietly at the west-end tunnel facing prior to their final removal when the Idaho crew blasted "the last round".

It's unknown exactly where the east crew met the west crew, but the Montana/Idaho state line is right down the middle of this sign. You're standing in two states!



Idaho: A coined or invented word.
 Called: "The Gem State"
 Forty third state, 7/03/1890
 Motto: Esto Perpetua, "It is Forever"
 Capital: Boise
 Gem: Star Garnet
 Bird: mountain bluebird
 Tree: western white pine
 Flower: syringa

Montana: Latinized Spanish word meaning "mountainous".
 Called: "The Treasure State"
 Forty first state, 11/08/1889
 Motto: Oro y Plata, "Gold & Silver"
 Capital: Helena
 Gem: Sapphire, Montana Agate
 Bird: western meadowlark
 Tree: ponderosa pine
 Flower: bitterroot

