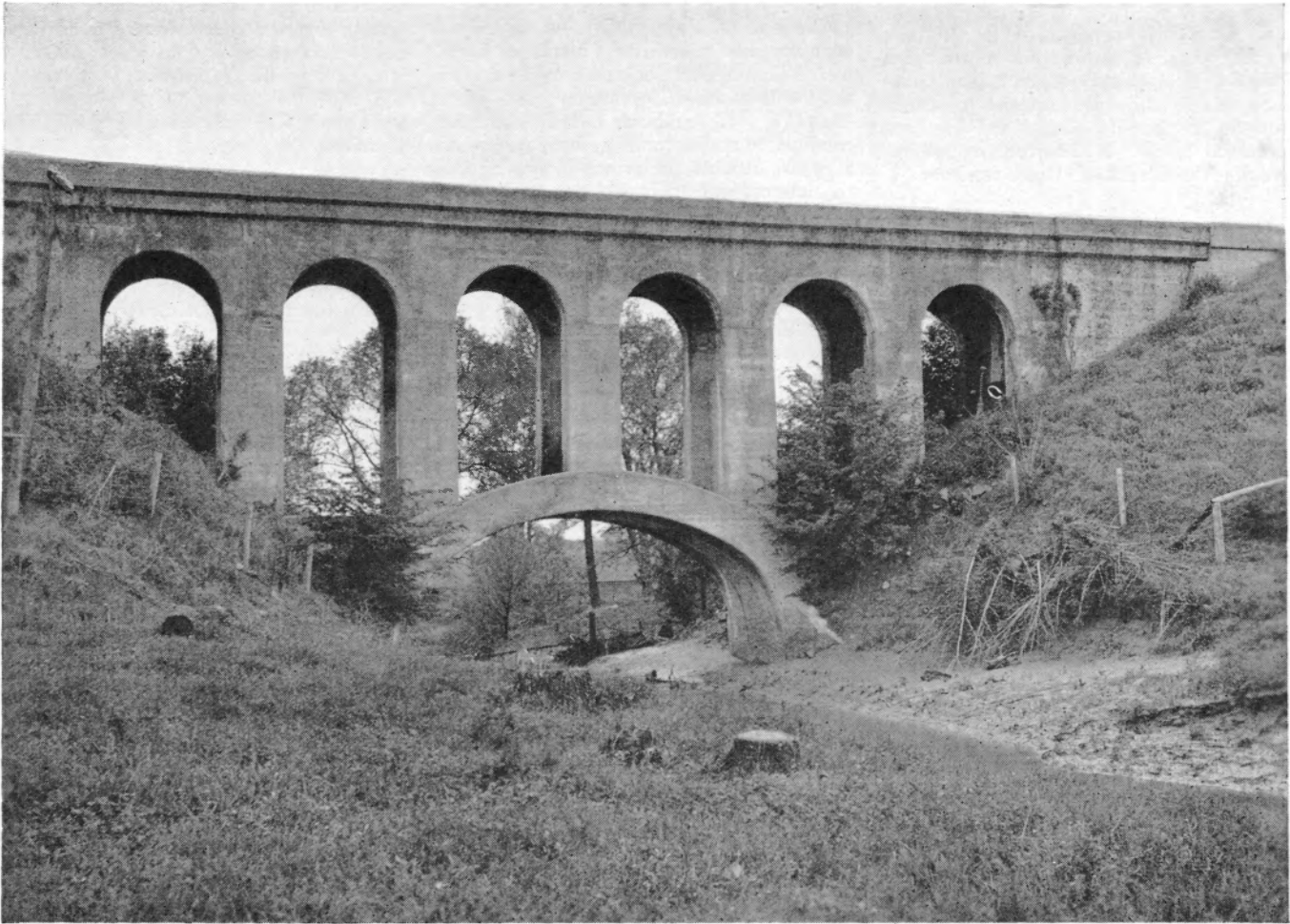


NO. 51 OF A SERIES OF FAMOUS ARCHES OF THE WORLD



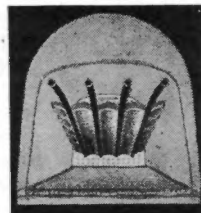
RICHLAND CREEK BRIDGE
RICHLAND, IOWA

An unusual reinforced concrete multiple arch bridge with "U" abutments, built in 1907, carries the Chicago, Milwaukee, St. Paul and Pacific Railroad on the main line to Kansas City. It consists of six arches on one 30-foot arch. It is 166 feet long and 48 feet high at stream bed. It is located two and one-half miles south

of Richland, Iowa. » » » *The Security Sectional Arch for the locomotive firebox was introduced in 1910 and was one of the first serious efforts at fuel conservation. Today its design is standard on American Railroads and an essential factor in the operation of high capacity, high speed modern locomotives.*

THERE'S MORE TO SECURITY ARCHES THAN JUST BRICK

**HARBISON-WALKER
 REFRACTORIES CO.**
Refractory Specialists



**AMERICAN ARCH CO.
 INCORPORATED**
 60 EAST 42nd STREET, NEW YORK, N. Y.
*Locomotive Combustion
 Specialists*