

C.M.ST.P.&P.R.R.

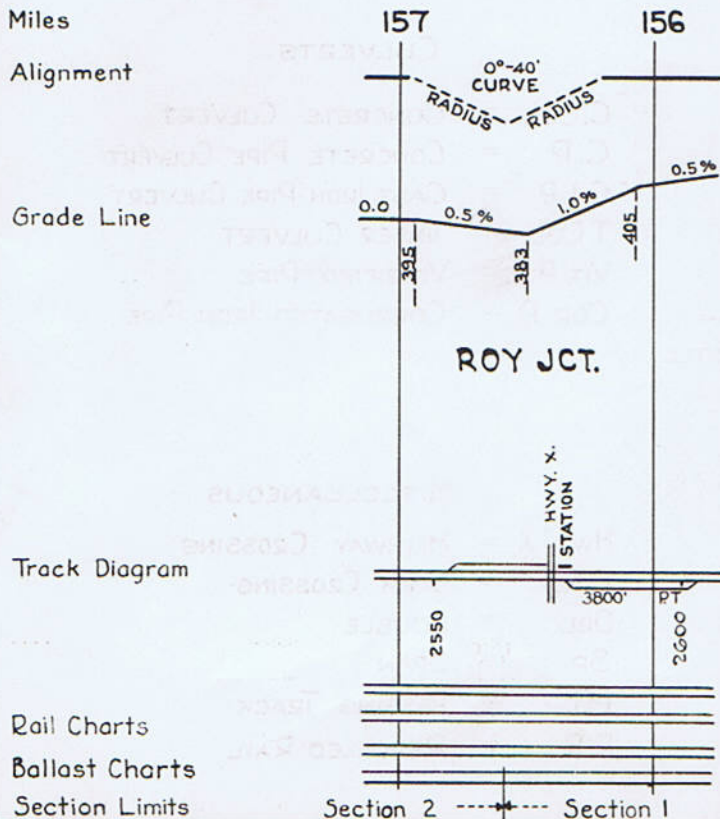
CONDENSED PROFILE

IOWA DIVISION

OFFICE OF VICE PRES.-CHIEF ENGR.
CHICAGO, ILL.

~~XXXXXXXXXX~~ OCT. 1973

EXPLANATIONS



SCALES

1" = 4000'

1" = 200'

{ Horizontal Scale for Profile,
Alignment, Tracks & Charts.
Vertical Scale for Profile.

Numbers on Grade Lines are % Gradients

Elevations are in feet above sea level for Top of Rail.

Numbers on track diagram (for example 2550 & 2600) indicate Profile Stations.

Bridges shown by over all dimensions.
Culverts shown by inside dimensions.

ABBREVIATIONS

BRIDGES

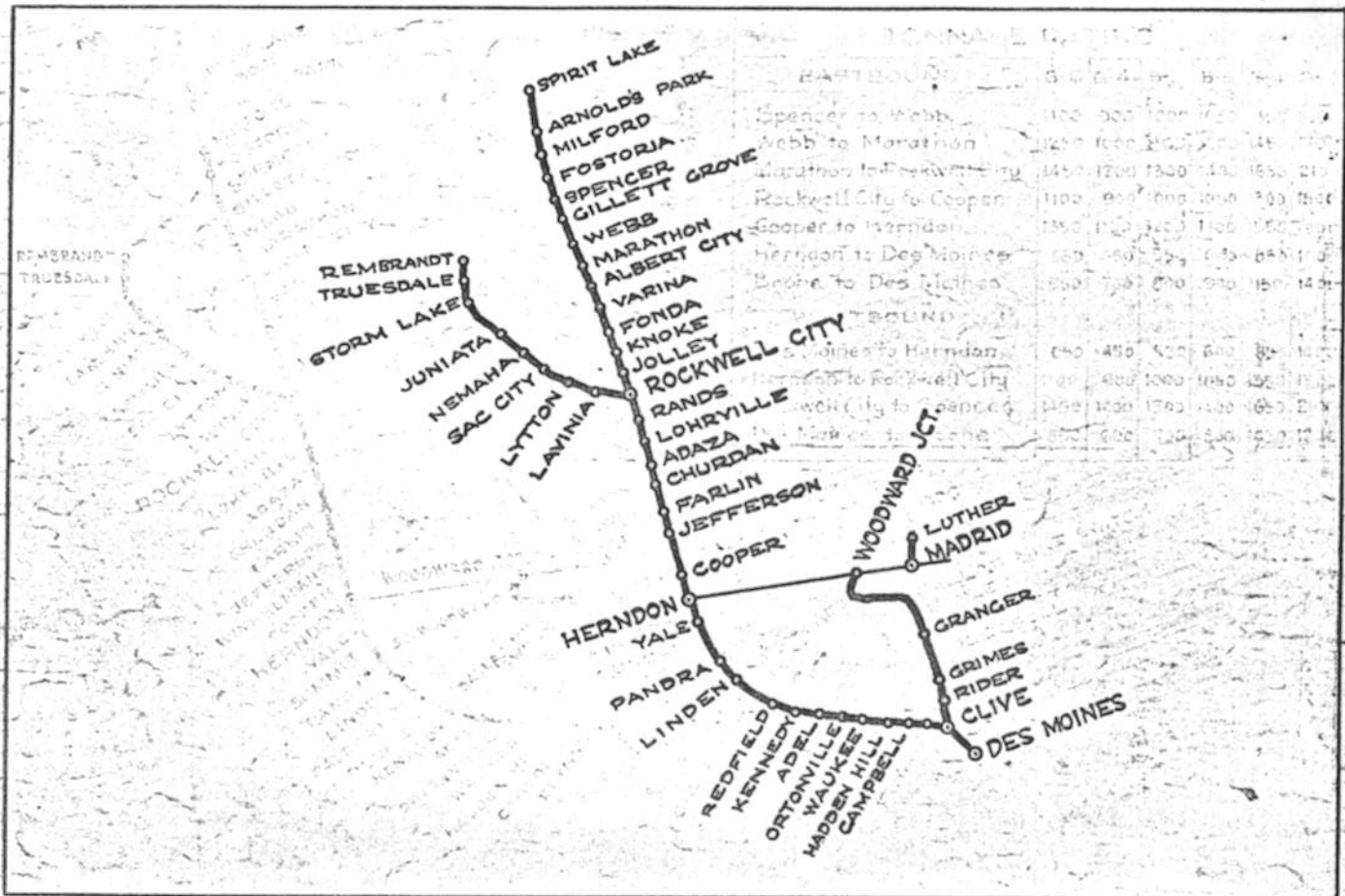
- ST. BR. = STEEL BRIDGE
- GIR. = STEEL GIRDER
- ARCH = CONCRETE ARCH
- S. ARCH = STONE ARCH
- PILE BR. = PILE BRIDGE OR TRESTLE
- C. PILE BR. = CONCRETE PILE BRIDGE
- CR. B. D. BR. = CREOSOTED BALLAST DECK TRESTLE

CULVERTS

- C. CUL. = CONCRETE CULVERT
- C. P. = CONCRETE PIPE CULVERT
- C. I. P. = CAST IRON PIPE CULVERT
- T. CUL. = TIMBER CULVERT
- VIT. P. = VITRIFIED PIPE
- COR. P. = CORRUGATED IRON PIPE

MISCELLANEOUS

- Hwy. X. = HIGHWAY CROSSING
- F. X. = FARM CROSSING
- DBL. = DOUBLE
- SP = SPAN
- PT. = PASSING TRACK
- RR = REROLLED RAIL

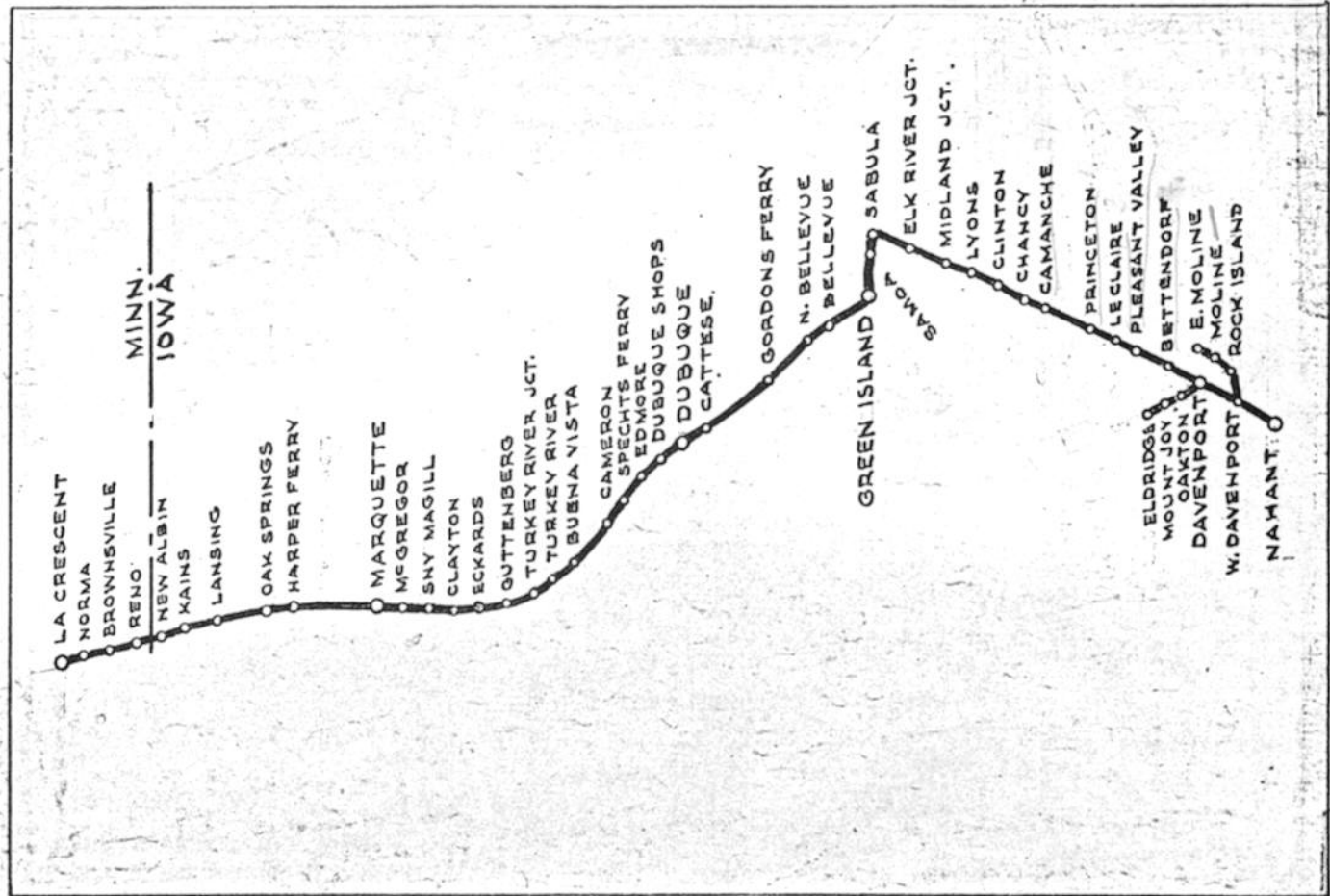


STATION INDEX

| STATION | PAGE | STATION | PAGE | STATION | PAGE | STATION | PAGE |
|-------------------|------|---------------|------|----------------|-------|---------------|------|
| Adaza | 34 | Hadden Hill | 38 | Milford | 14 | Waukeea | 47 |
| Adel | 46 | (Hanleyville) | 54 | | | Webb | 22 |
| Albert City | 25 | Herndon | 40 | Nemaha | 7 | (Winklemans) | 38 |
| Arnolds Park | 14 | | | | | Woodward Jct. | 52 |
| | | (Ingersoll) | 55 | (Okoboji) | 14 | Yale | 41 |
| | | | | Ortonville | 47 | | |
| (Caldwells) | 43 | Jefferson | 37 | Panora | 42 | | |
| (Campbell) | 48 | Jolley | 30 | | | | |
| Churdan | 35 | Juniata | 6 | Rands | 32 | | |
| Clive | 49 | | | Redfield | 44 | | |
| Cooper | 39 | Kennedy | 45 | Rider | 56 | | |
| (Coaldale) | 50 | Knoke | 29 | Rockwell City | 12-31 | | |
| (Dallas Mine Sw.) | 53 | | | Rembrandt | 2 | | |
| Des Moines | 50 | (Lakeside) | 5 | Sac City | 9 | | |
| | | Lavinia | 11 | Spencer | 17-19 | | |
| Farlin | 36 | Linden | 43 | Spirit Lake | 13 | | |
| Fonda | 28 | Lohrville | 33 | Storm Lake | 4-5 | | |
| Fostoria | 16 | Luther | 59 | (Summit) | 41 | | |
| | | Lytton | 10 | (So. Woodward) | 52 | | |
| | | | | Truesdale | 3 | | |
| Gillette Grove | 21 | Madrid | 60 | Varina | 27 | | |
| Granger | 34 | Marathon | 24 | | | | |
| Grimes | 55 | | | | | | |

NOTE: STATIONS SHOWN IN () NO LONGER LISTED IN TIME TABLE.

"B"



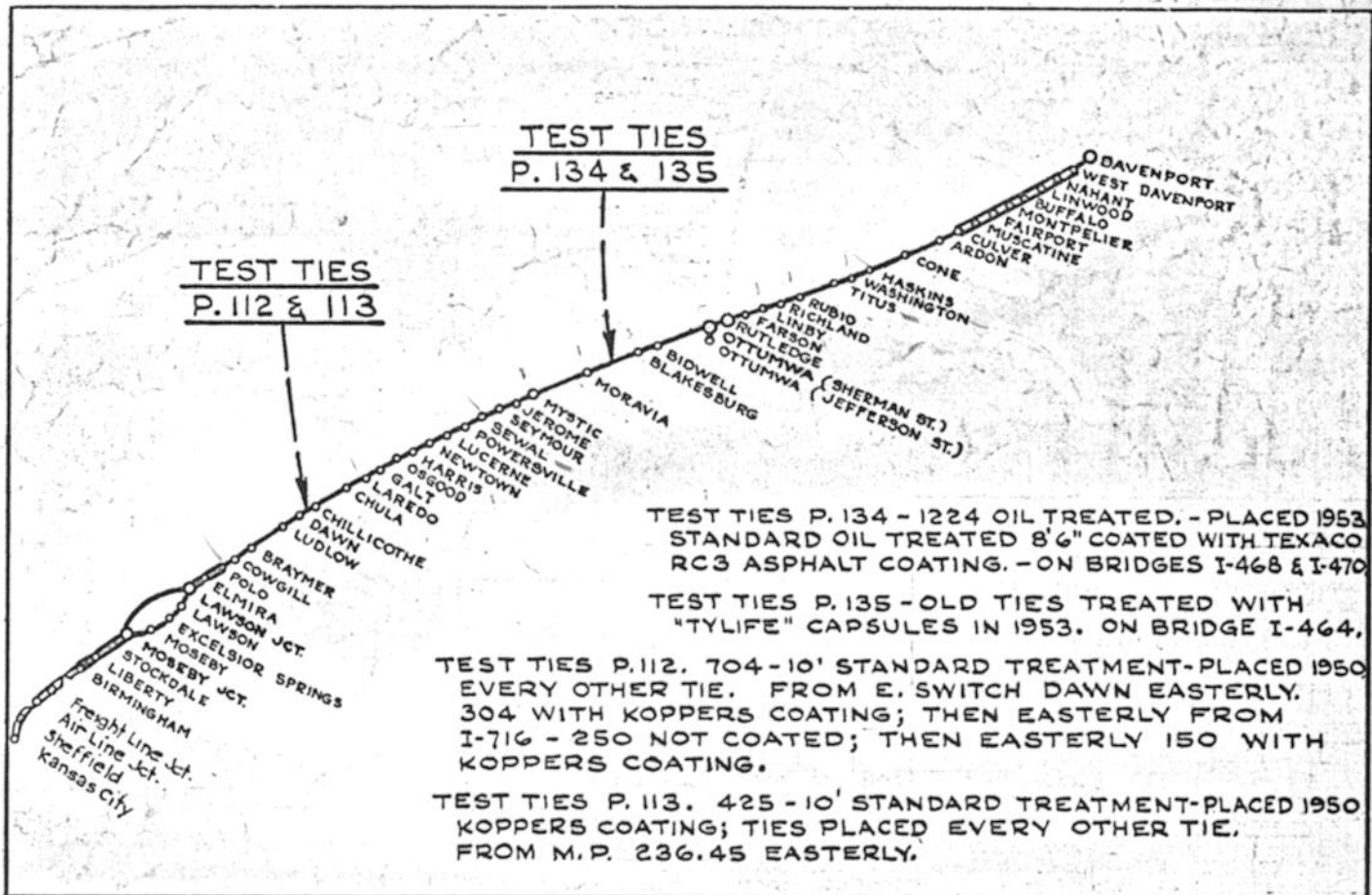
"A"

STATION INDEX

| STATION | PAGE | STATION | PAGE | STATION | PAGE |
|------------------|---------|------------------|---------|----------------|---------|
| Bellevue | 156 | I.M.&D. Jct. | 128 | Rock Island | 231 |
| Bettendorf | 234 | | | (Rossville) | 124 |
| (Bluff Springs) | 126 | | | | |
| (Brownsville) | 130 | Kains | 134 | Samoa | 332 |
| | | | | Saubla | 244-334 |
| Cameron | 147 | La Crescent | 128 | Sabula Jct. | 244 |
| Camanche | 239 | Lansing | 135 | (Shafton) | 238 |
| Cattese | 152 | Le Claire | 236 | (Smiths) | 155 |
| Chancy | 240 | Lyons | 241 | Sny Magill | 142 |
| Clayton | 142 | | | Spechts Ferry | 149 |
| Clinton | 240 | | | | |
| (Dixon) | 163 | Mc Gregor | 140 | Turkey River | 145 |
| Davenport | 233 | Marquette | 140 | | |
| Deer Creek | 241 | (Massey) | 152 | (Waukon) | 122 |
| Dubuque | 151 | Moline | 231 | (Waukon Jct.) | 126-139 |
| Dubuque Shops | 151 | Mount Joy | 160 | (Waupeton) | 147 |
| (Donahue) | 162 | | | (Waterville) | 125-133 |
| E. Moline | 232 | Nahant | 228-230 | Waterworks | 159-234 |
| E. Wye. Sw. | 233 | New Albin | 133 | W. Davenport | 228-230 |
| Eckards | 143 | Norma | 129 | (Wilkins) | 153 |
| Edmore | 150 | (N. Bellevue) | 155 | Wood | 151 |
| Eldridge | 161 | (N. Buena Vista) | 146 | | |
| (Elk River Jct.) | 242-243 | | | (Yellow River) | 140 |
| | | Oakton | 159 | | |
| Gordons Ferry | 154 | | | | |
| Green Island | 158 | (Pleasant Creek) | 157 | | |
| Guttenberg | 144 | Pleasant Valley | 235 | | |
| | | Princeton | 237 | | |
| Harpers Ferry | 138 | | | | |
| (Heytmans) | 136 | Reno | 131 | | |

NOTE:
STATIONS SHOWN IN () NO
LONGER LISTED ON TIME TABLE.

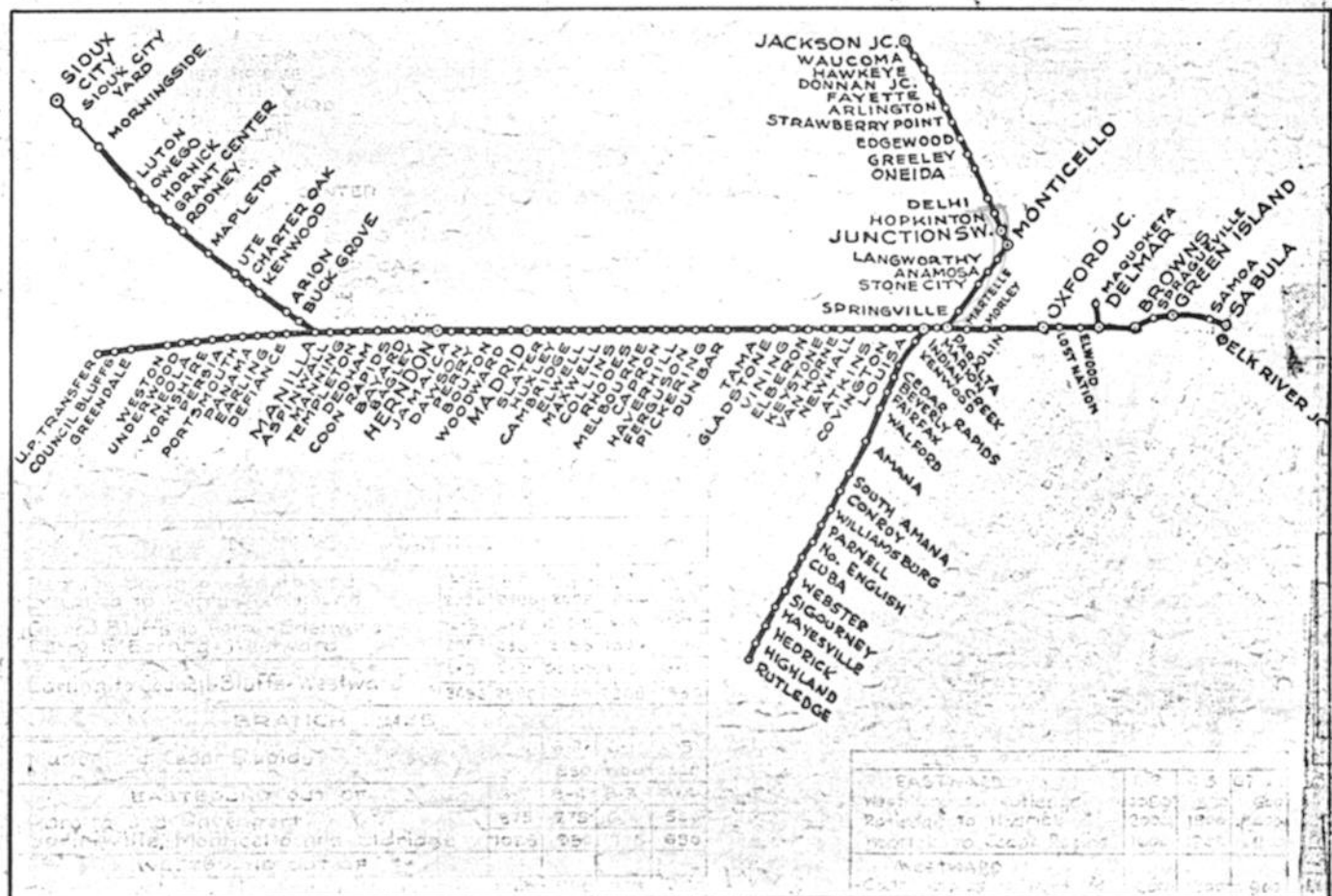
"B"



STATION INDEX

| STATION | PAGE | STATION | PAGE | STATION | PAGE | STATION | PAGE | STATION | PAGE |
|-------------------|------------|-------------------|------------|---------------|---------|---------------------|------------|----------------|------|
| Ardon | 221 | Elmira | 174 | Laredo | 186 | Polo | 175 | Washington | 215 |
| Air Line Jct. | 167 | Excelsior Springs | 171 | Lawson | 173 | Powersville | 194 | (Wellston) | 214 |
| (Bear Creek) | 206 | | | Liberty | 169 | | | West Davenport | 228 |
| Bidwell | 205 | Fairport | 225 | Linby | 210 | (Rothbun) | 200 | West Wye Tower | 167 |
| Birmingham | 168 | Farson | 209 | Linwood | 227 | Richland | 212 | | |
| Blakesburg | 204 | (Foster) | 202 | Lucerne | 192 | Rubio | 213 | | |
| Braymer | 178 | Freight Line Jct. | 167 | Ludlow | 180 | Rutledge | 61-207 | | |
| (Brompton) | 202 | | | | | | | | |
| Buffalo | 227 | Galt (Gladwin) | 187 218 | Montpelier | 226 | Sewal | 195 | | |
| | | | | Moravia | 201 | Seymour | 197 | | |
| Chillicothe | 182 | Horris | 190 | Moseby | 171 | Sheffield | 167 | | |
| Chula | 184 | Haskins | 217 | Moseby Jct. | 170 | | | | |
| | | | | Muscatine | 222-223 | | | | |
| Cowgill | 177 | | | Mystic | 199 | Stockdale (Sturges) | 170 183 | | |
| Cone | 219 | | | | | | | | |
| | | | | Nahant | 228-230 | | | | |
| Culver (Cranston) | 222 220 | Jerome | 198 | Newtown | 191 | Titus (Trask) | 214 201 | | |
| | | | | | | | | | |
| Davenport | 159 | Kansas City | 166 | Osgood | 188 | | | | |
| Down | 180 | | | OHumwa Jct. | 165-206 | | | | |
| | | | | Sherman St. | 165 | | | | |
| | | | | Jefferson St. | | | | | |

NOTE:
STATIONS SHOWN IN () NO LONGER LISTED IN TIME TABLE.



STATION INDEX

| STATION | PAGE | STATION | PAGE | STATION | PAGE | STATION | PAGE | STATION | PAGE | STATION | PAGE |
|----------------|---------|----------------|---------|----------------|---------|-------------|---------|----------------|------|-----------|------|
| Anamosa | 102 | Delhi | 97 | Hornick | 250 | (Miles) | 118 | Samoa | 332 | (Wyoming) | 107 |
| Arlington | 90 | Delmar | 113-325 | Huxley | 293 | Monticello | 100-110 | (Sand Springs) | 82 | | |
| Aspinwall | 277 | (Dewitt) | 116 | | | Morley | 318 | | | Yorkshire | 269 |
| Arion | 260 | | | Indian Creek | 314 | Morningside | 245 | | | | |
| Atkins | 312 | Donnan Jct. | 87 | | | (Midway) | 306 | Sioux City | 245 | | |
| (Astor) | 275 | Dunbar | 302 | Jackson Jct. | 83 | Neola | 267-268 | Slater | 292 | | |
| | | Duke | 294 | Jamaica | 286 | Newhall | 311 | (Spragueville) | 328 | | |
| Bagley | 284 | Earling | 273 | Junction Sw. | 82-99 | | | Springville | 104 | | |
| Bayard | 283 | Edgewood | 93 | (Kenwood) | 258 | | | Stone City | 103 | | |
| | | Elberon | 307 | (Kenwood Park) | 79 | | | Strawbly Point | 92 | | |
| Bouton | 289 | Elk River Jct. | 120 | Keystone | 308 | Olin | 320 | Tama | 304 | | |
| Browns | 117-327 | Elwood | 324 | | | Oneida | 95 | (Teeds Grove) | 119 | | |
| Buck Grove | 261 | | | Langworthy | 101 | Oxford Jct. | 106-322 | Templeton | 279 | | |
| | | | | (Lainsville) | 331 | (Owego) | 249 | | | | |
| Cambridge | 294 | Fayette | 88 | Lost Nation | 323 | Panama | 272 | Underwood | 266 | | |
| Charter Oak | 257 | Ferguson | 301 | Louisa | 314 | Paralta | 104-316 | U.P. Transfer | 263 | | |
| Cedar Rapids | 78 | (Greendale) | 264 | Luton | 247-248 | (Park) | 79 | Ute | 256 | | |
| (Chautauqua) | 264 | Green Island | 329 | Mapleton | 254 | Perry | 287 | Van Horne | 309 | | |
| | | Greeley | 94 | Madrid | 291 | Persia | 269 | Vining | 306 | | |
| Collins | 296 | Gladstone | 305 | Manilla | 262-275 | Pickering | 301 | (Viola) | 103 | | |
| Coon Rapids | 282 | Grant Center | 251 | Manning | 278 | Portsmouth | 271 | | | | |
| Council Bluffs | 263 | (Glen Ellen) | 246 | Maquoketa | 112 | (Potter) | 303 | | | | |
| (Covington) | 313 | (Hale) | 320 | Marion | 79 | (Preston) | 118 | Waucoma | 84 | | |
| | | Haverhill | 300 | Martelle | 317 | | | (Welton) | 115 | | |
| Dawson | 286 | Hawkeye | 86 | Maxwell | 295 | (Riggs) | 326 | Weston | 265 | | |
| Dedham | 280 | Herdon | 285 | Melbourne | 298 | Rhodes | 297 | Woodward | 290 | | |
| Defiance | 274 | Hopkinton | 98 | | | Rodney | 252 | (Worthington) | 81 | | |
| Delaware | 96 | | | | | | | | | | |

CEDAR RAPIDS

RUTLEDGE

| | |
|----------------|----|
| Amana | 74 |
| Beverly | 77 |
| Cedar Rapids | 78 |
| Conroy | 73 |
| (Cuba) | 68 |
| (East Amana) | 75 |
| Fairfax | 77 |
| Hayesville | 65 |
| Medrick | 63 |
| Highland | 62 |
| (Middle Amana) | 74 |
| North English | 69 |
| Parnell | 70 |
| Rutledge | 61 |
| Sigourney | 66 |
| South Amana | 73 |
| Yera | 78 |
| Walford | 76 |
| Webster | 68 |
| Williamsburg | 71 |
| (Park) | 79 |

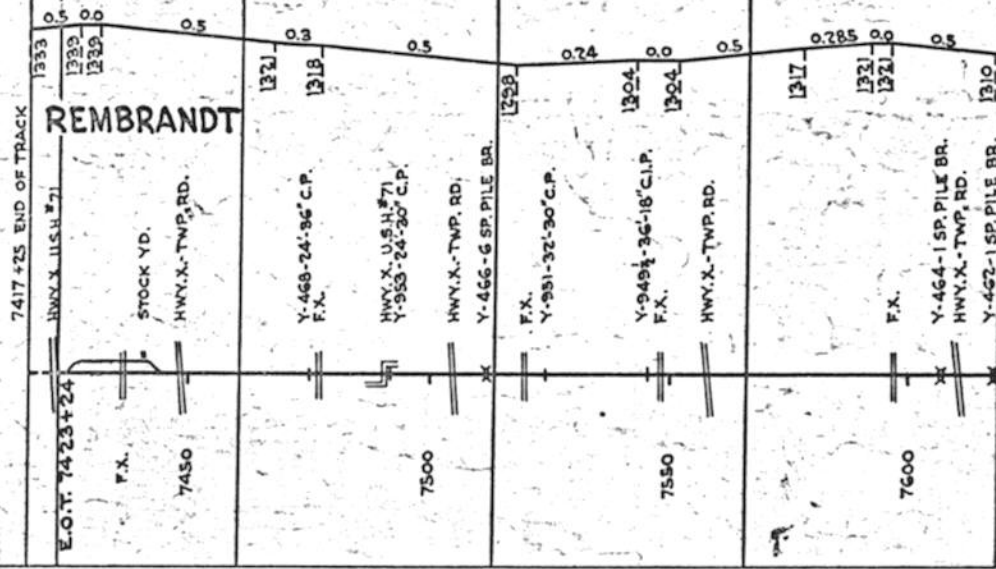
NOTE: STATIONS SHOWN
IN () NO LONGER
LISTED ON TIME TABLE.

"D"

TRK. RETIRED
A.F.E. 78912-1960

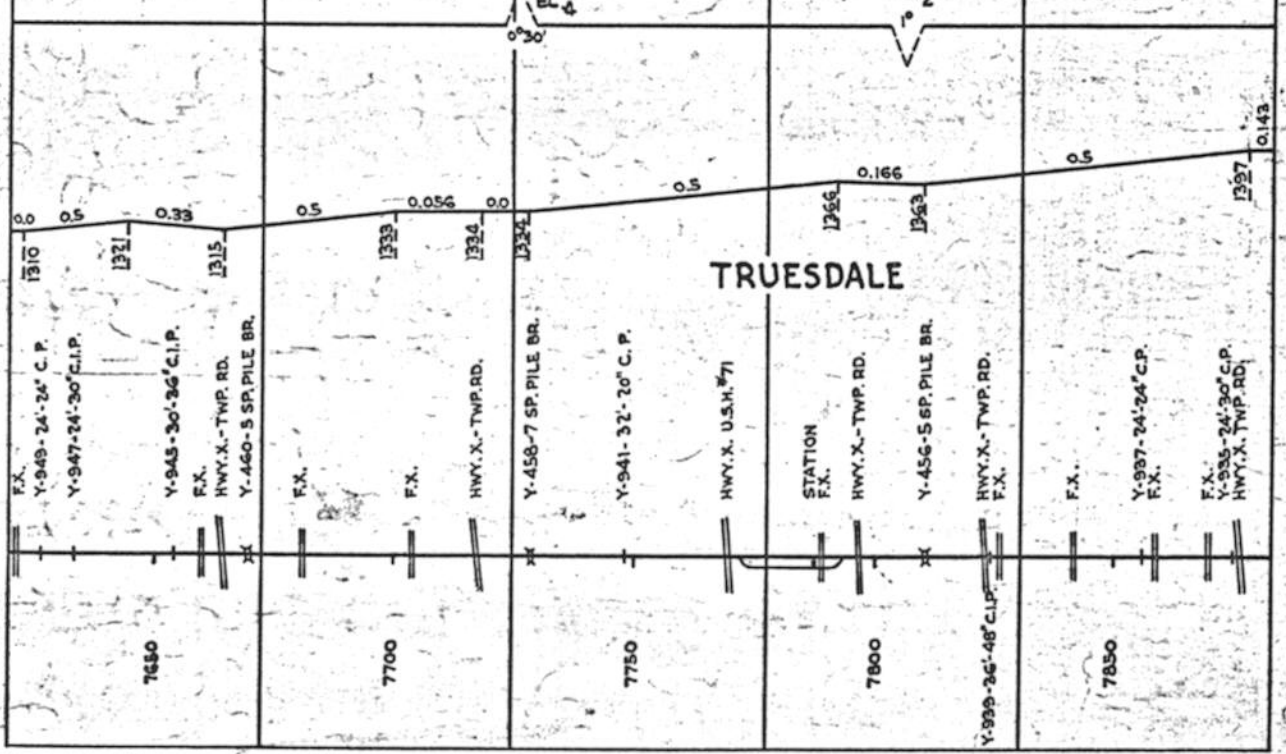
Sec.
0613

REMBRANDT

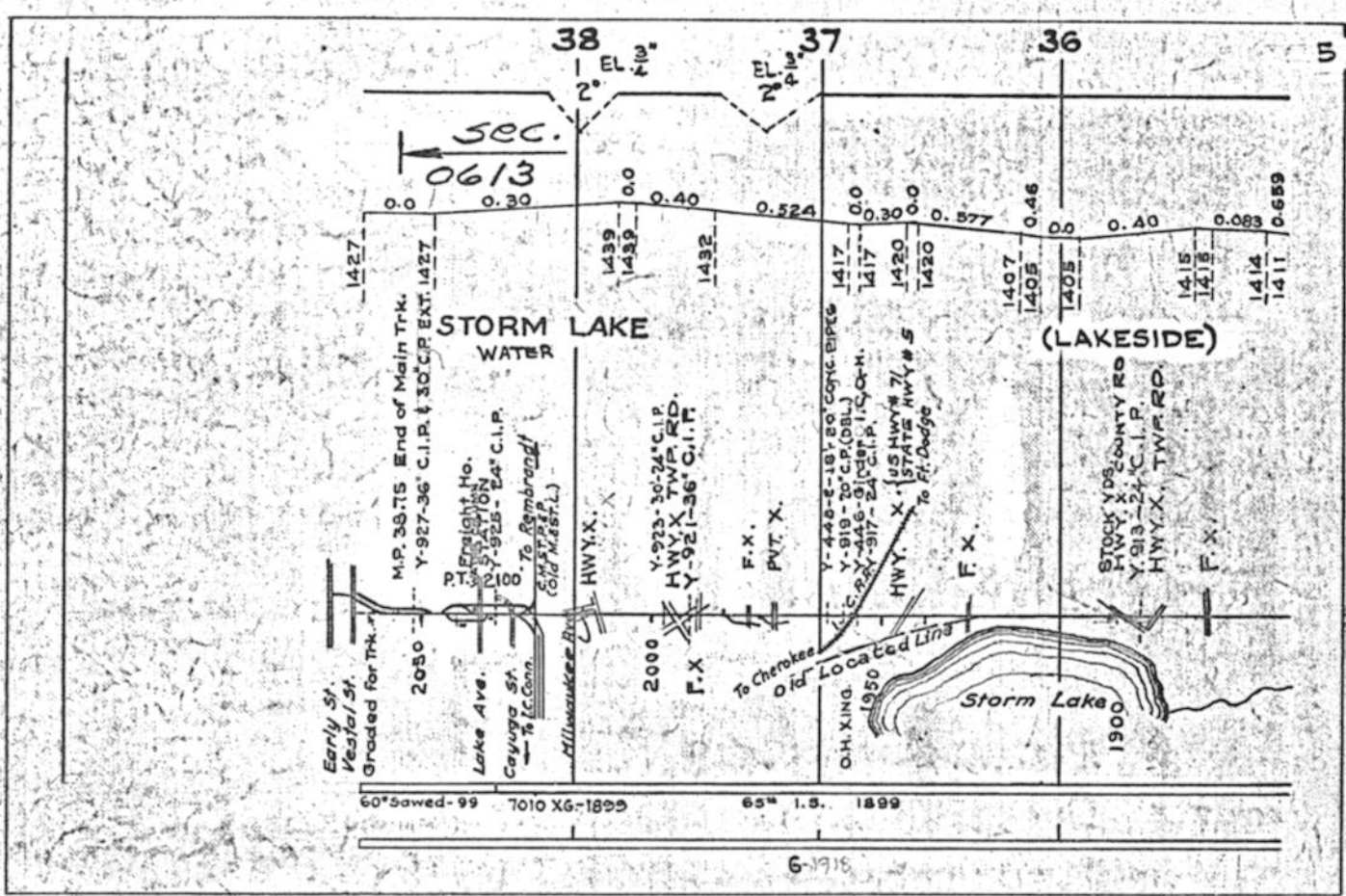
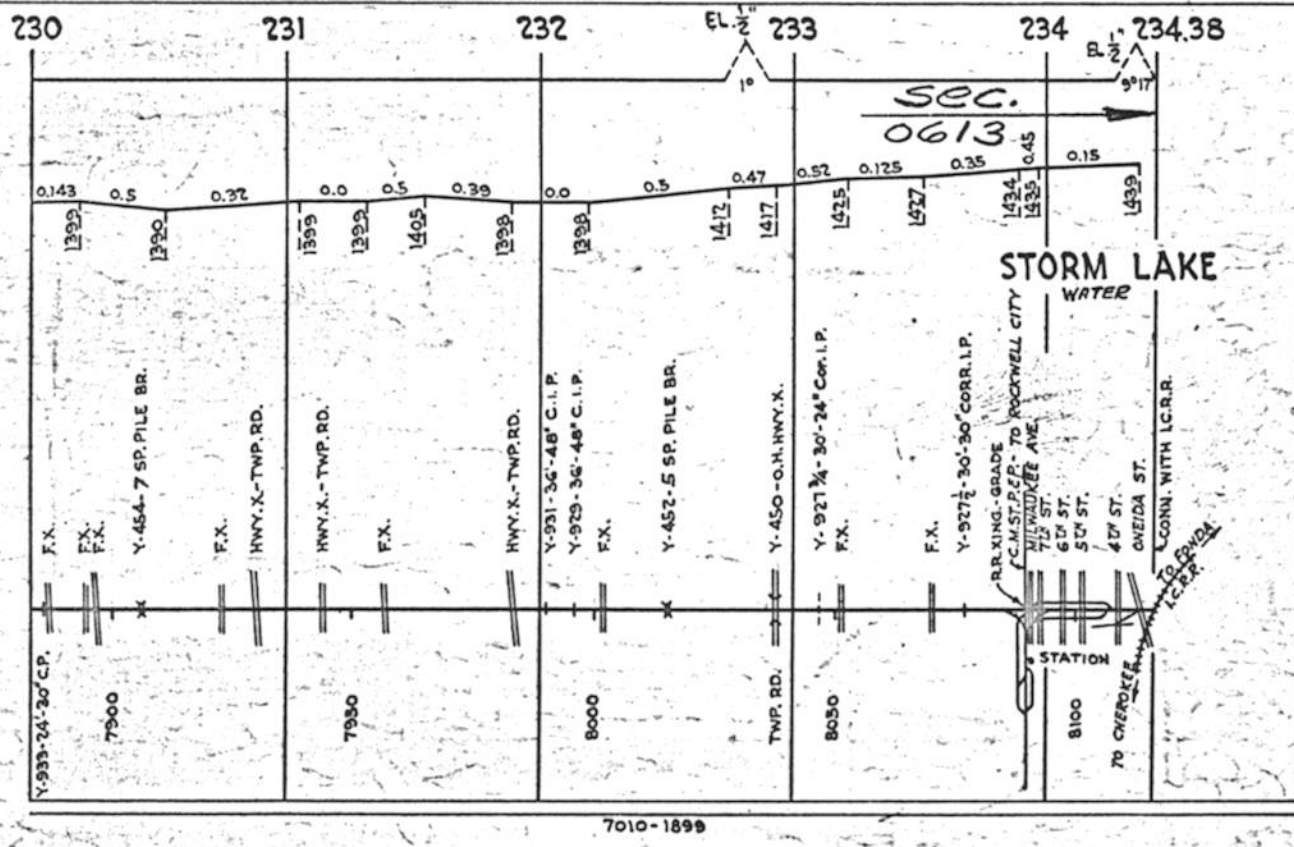


7010 - 1899

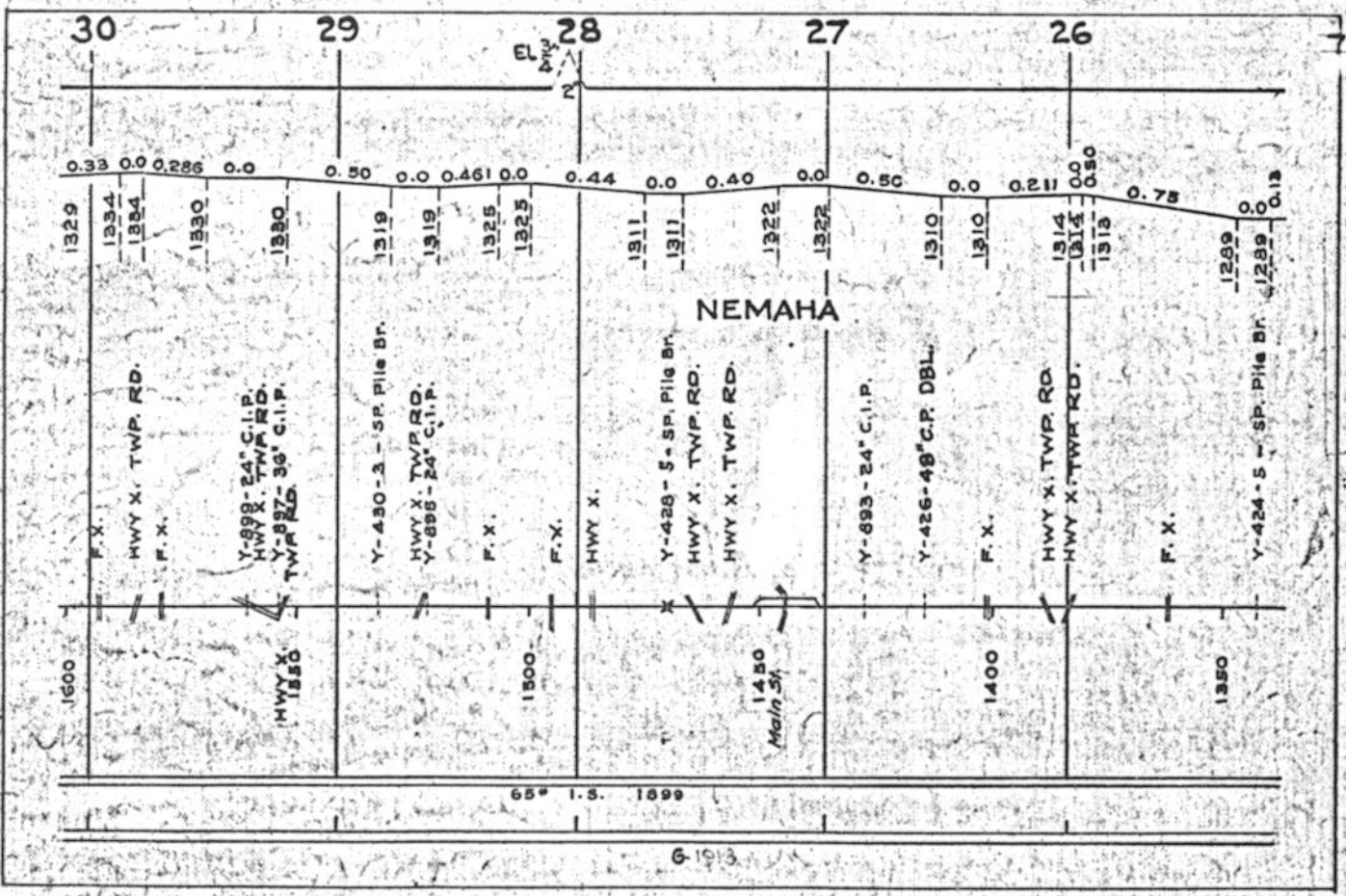
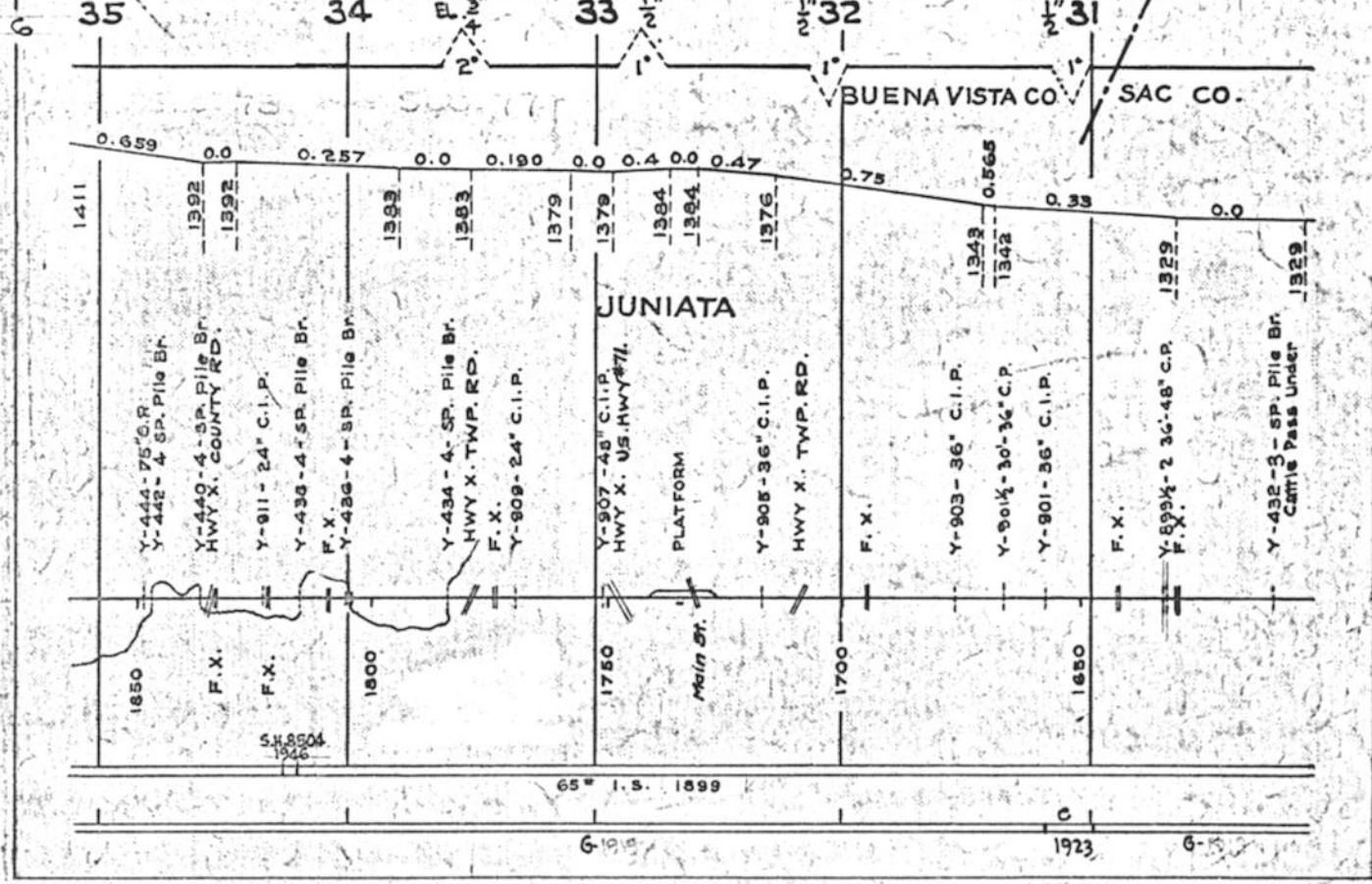
TRUESDALE

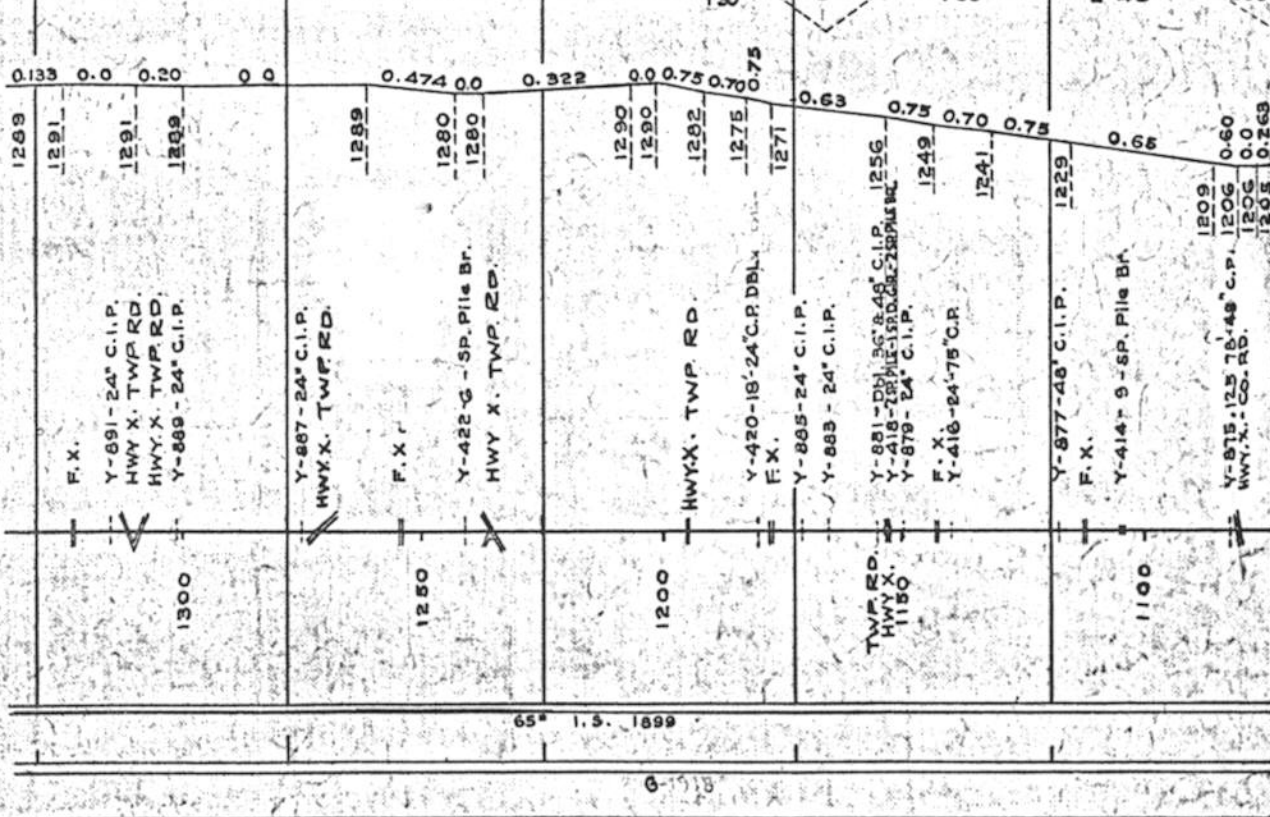


7010 - 1899



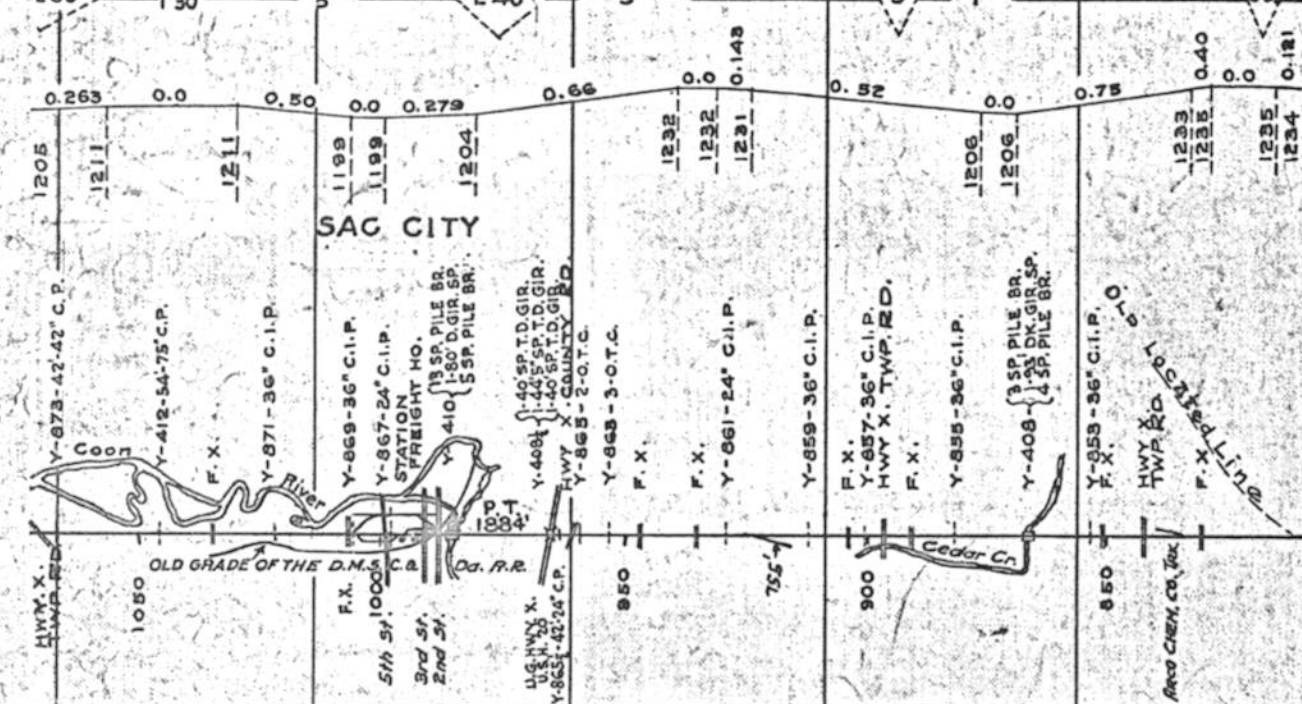
STORM LAKE LINE - ROCKWELL CITY TO STORM LAKE, IA.





65° 1.5. 1899

6



SAG CITY

OLD GRADE OF THE D.M.S. C.A.

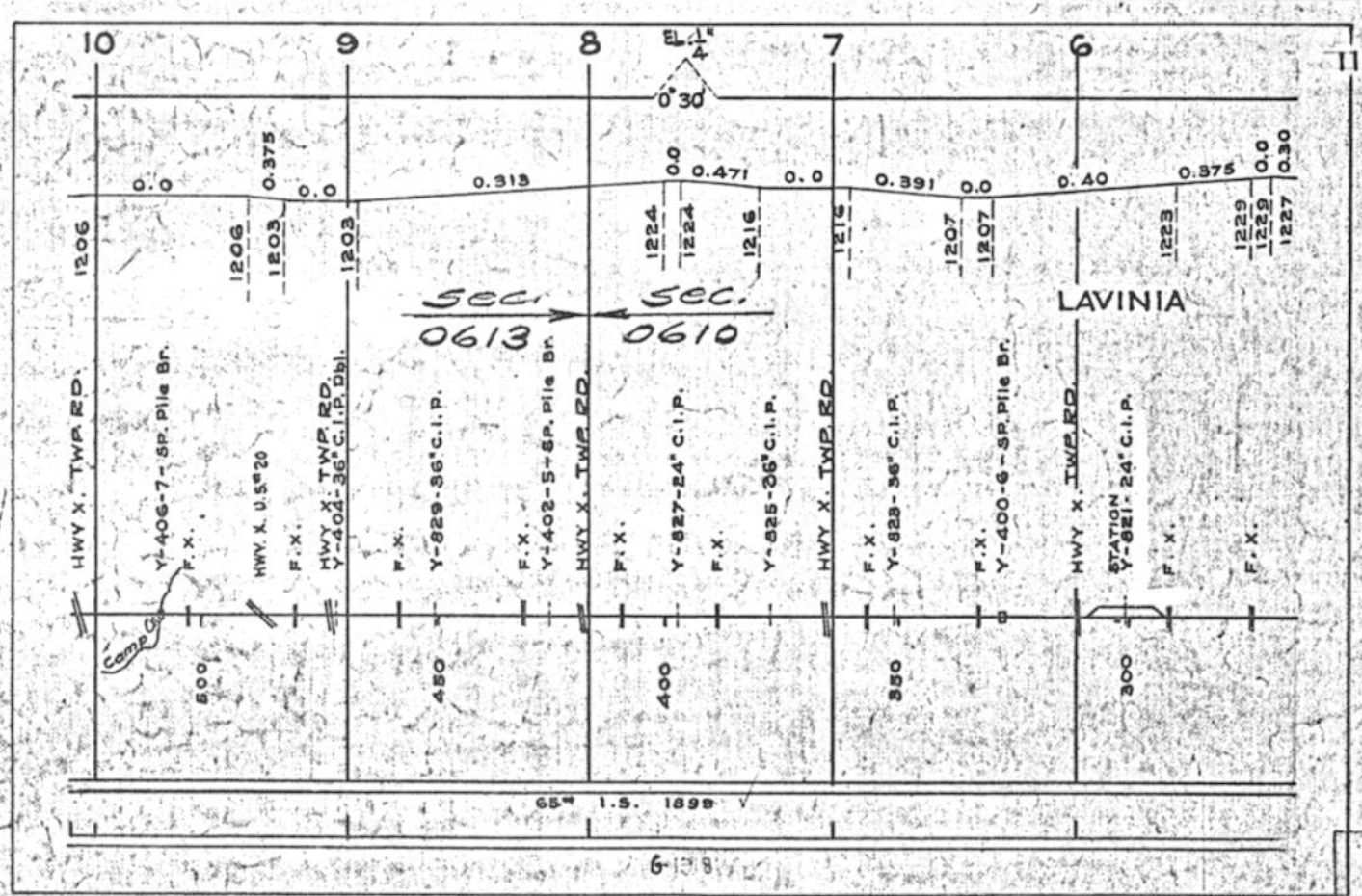
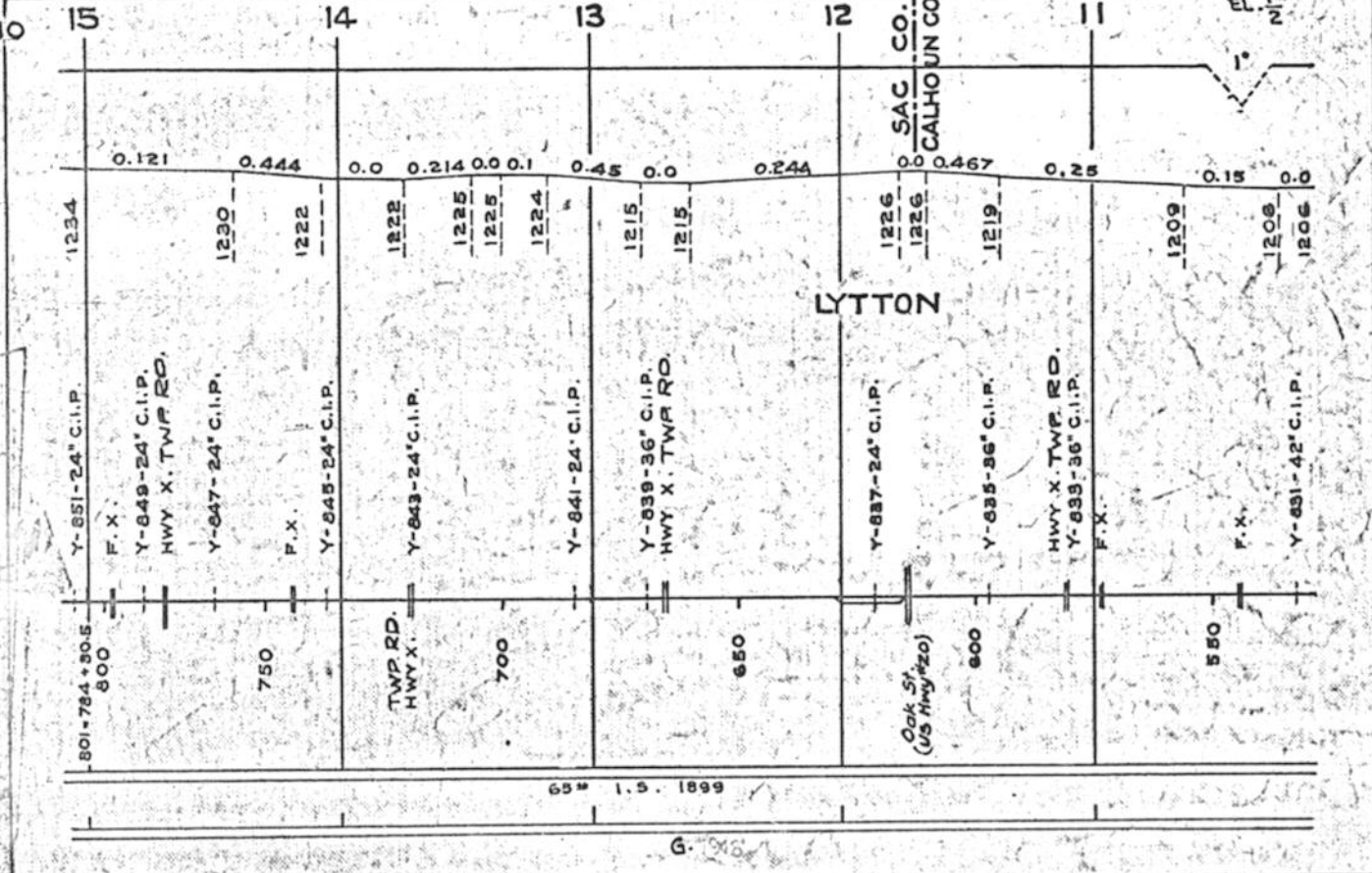
Co. R.R.

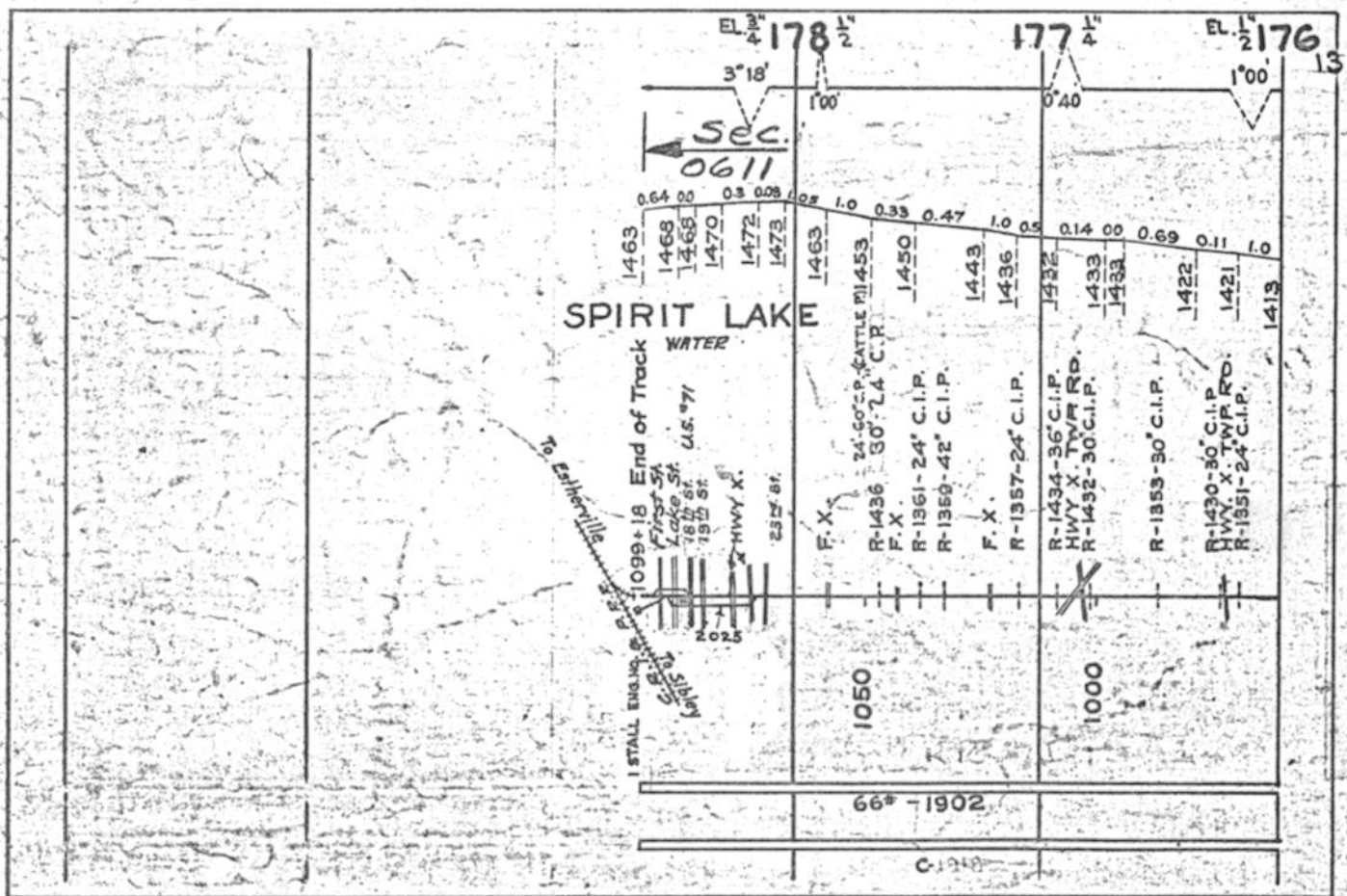
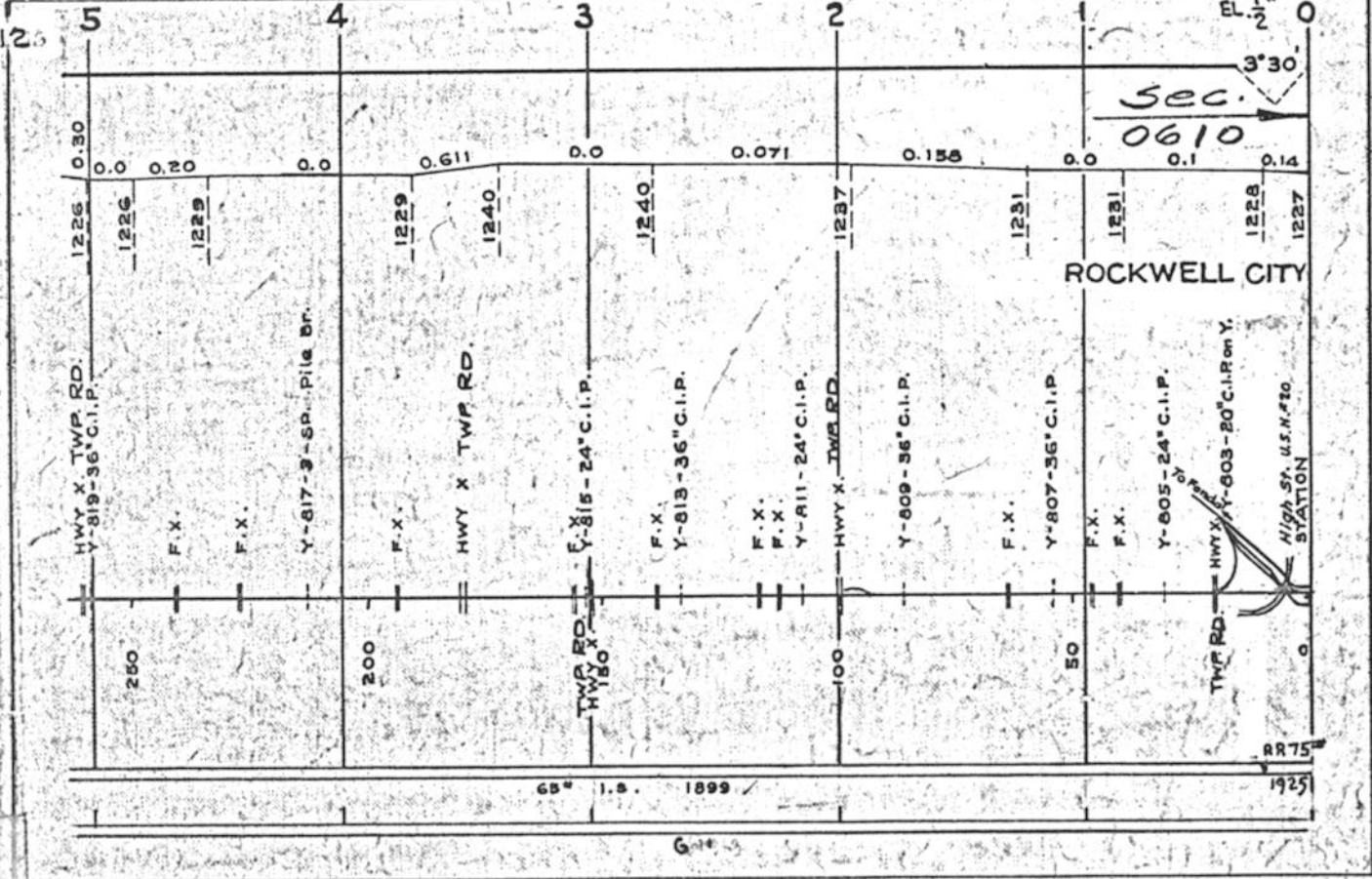
Cedar Cr

OLD Located Line

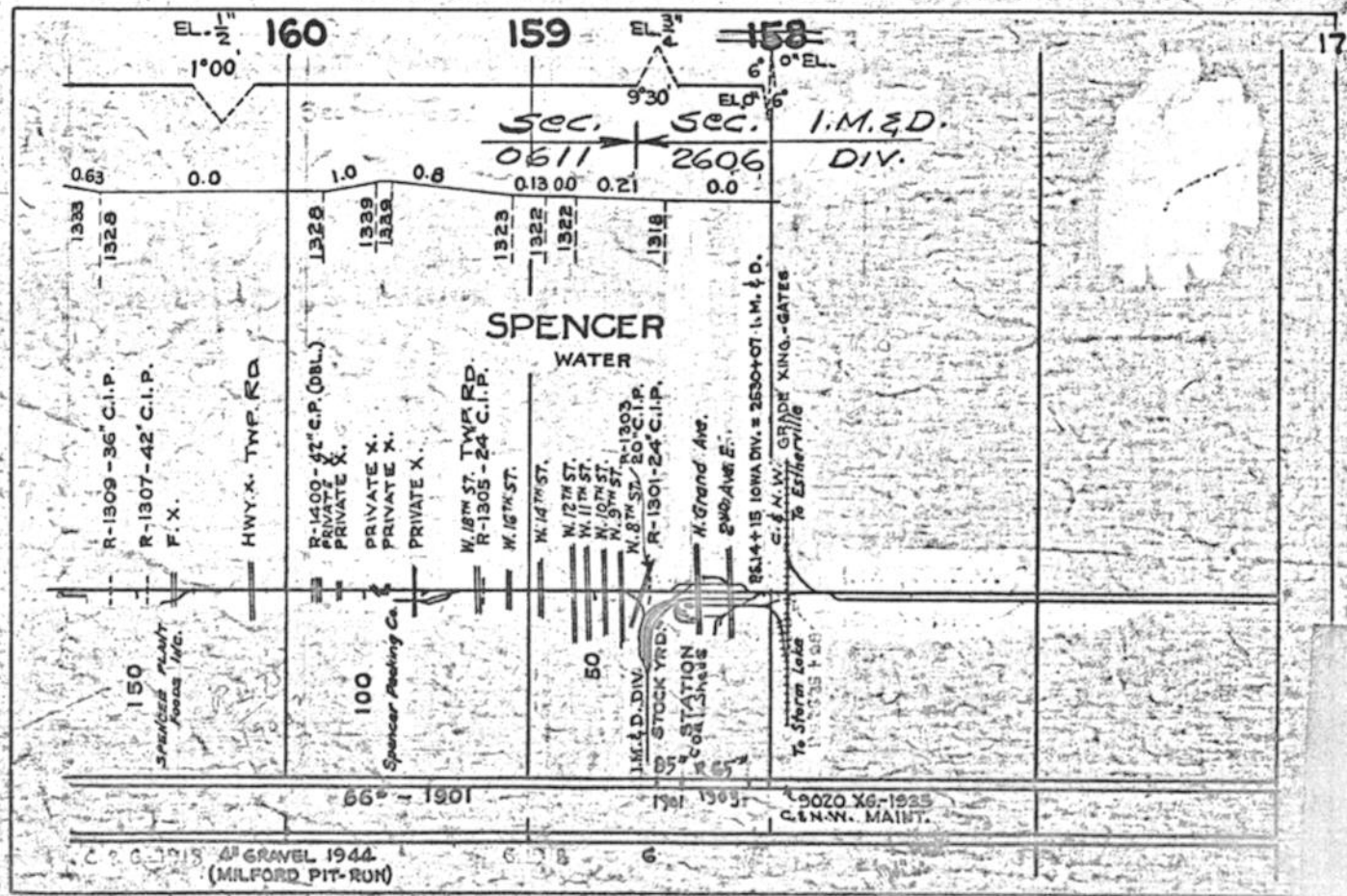
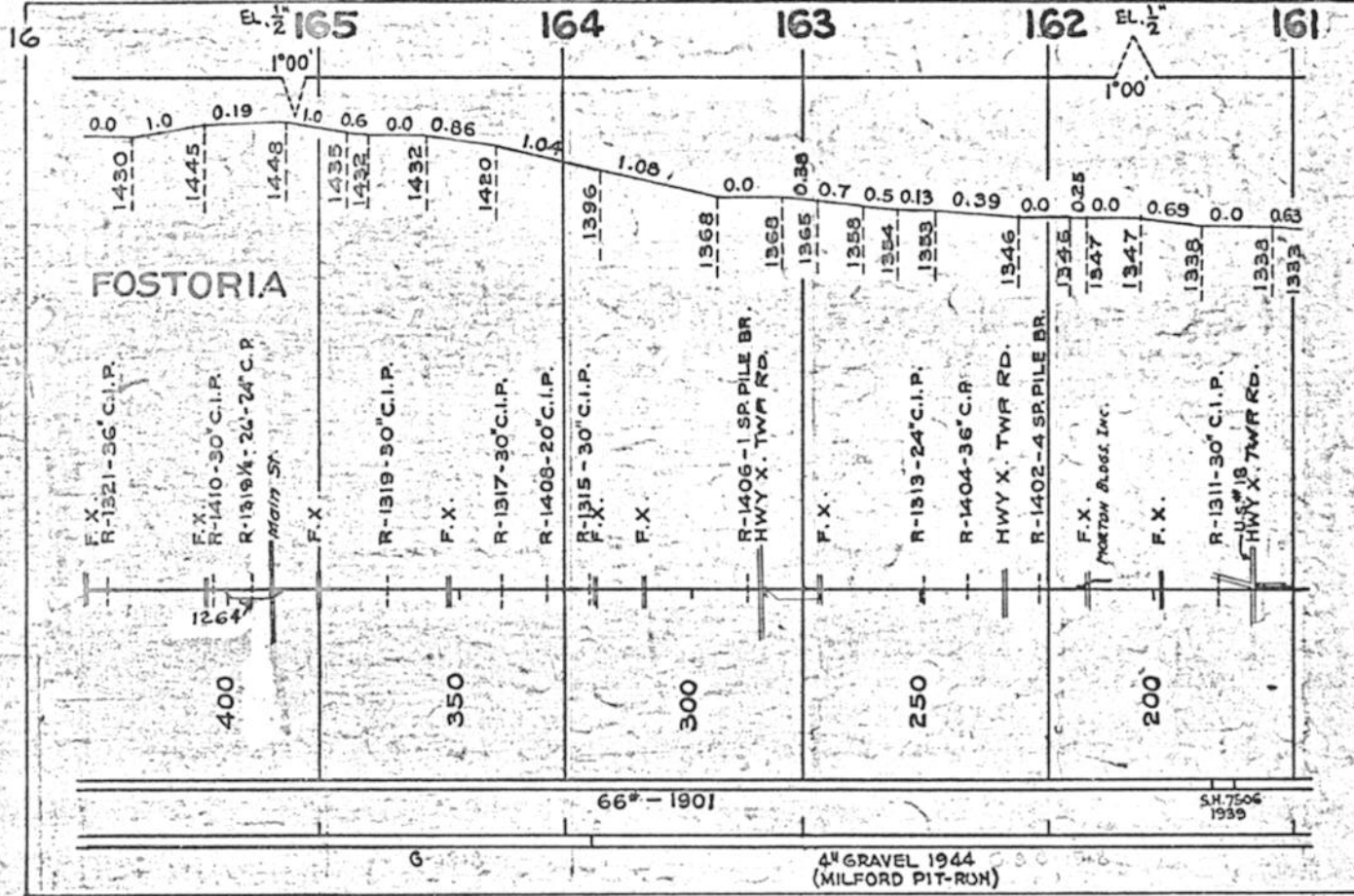
65° 1.5. 1899

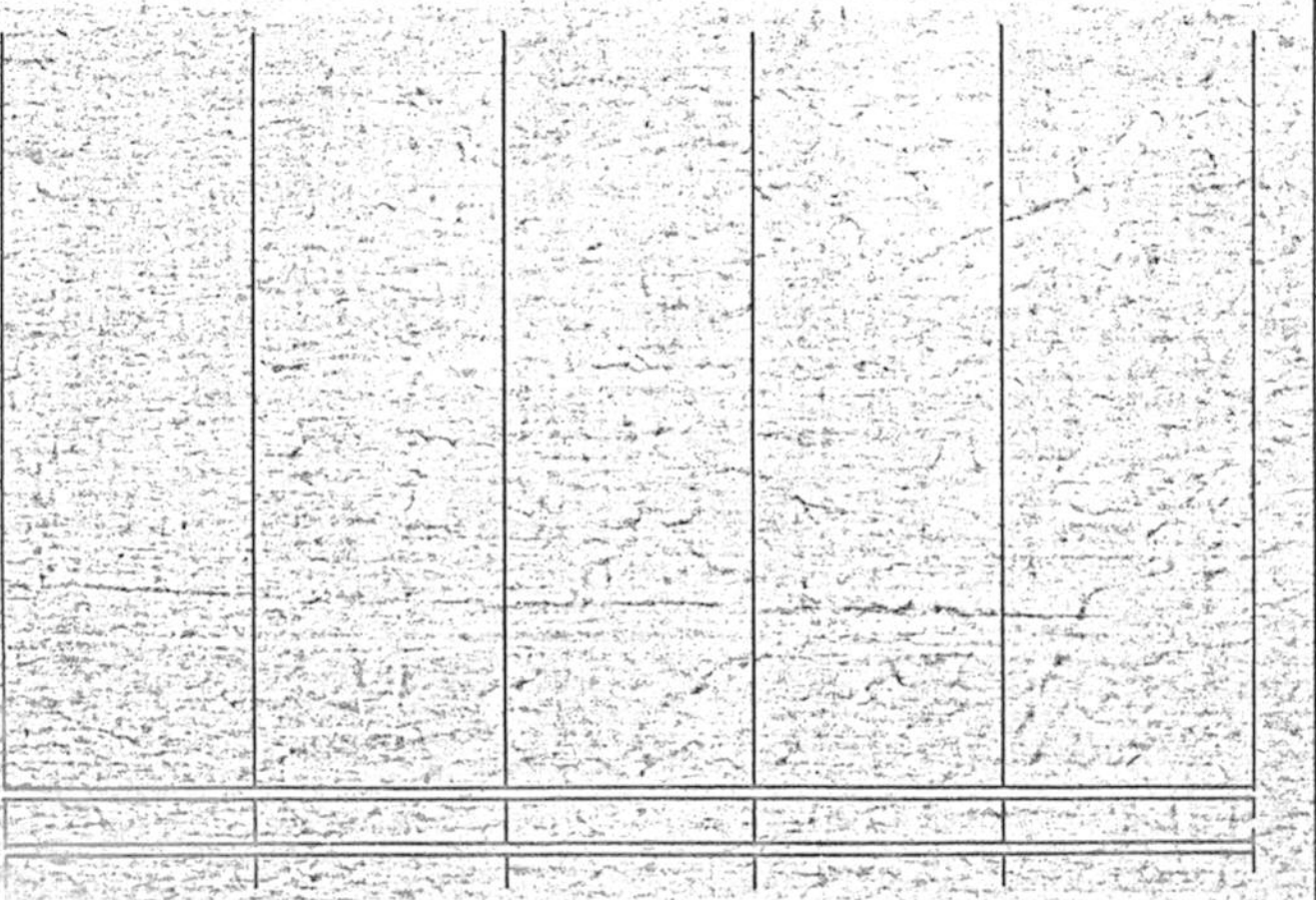
6



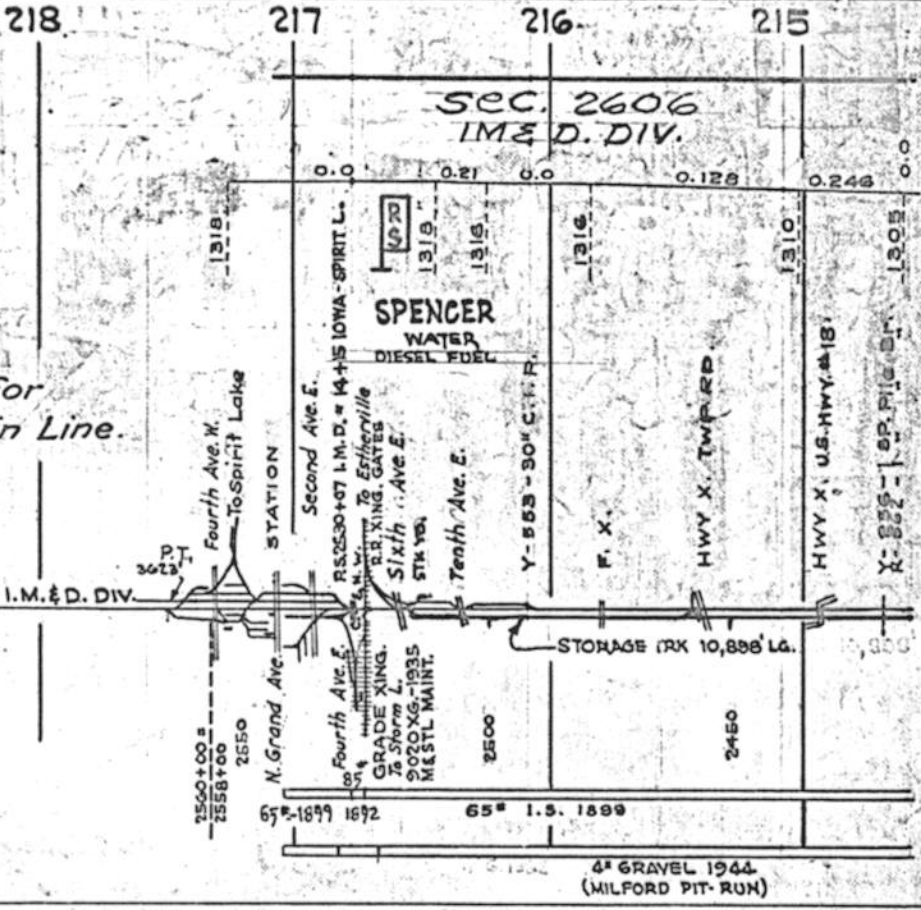


MAIN LINE - DES MOINES TO SPIRIT LAKE



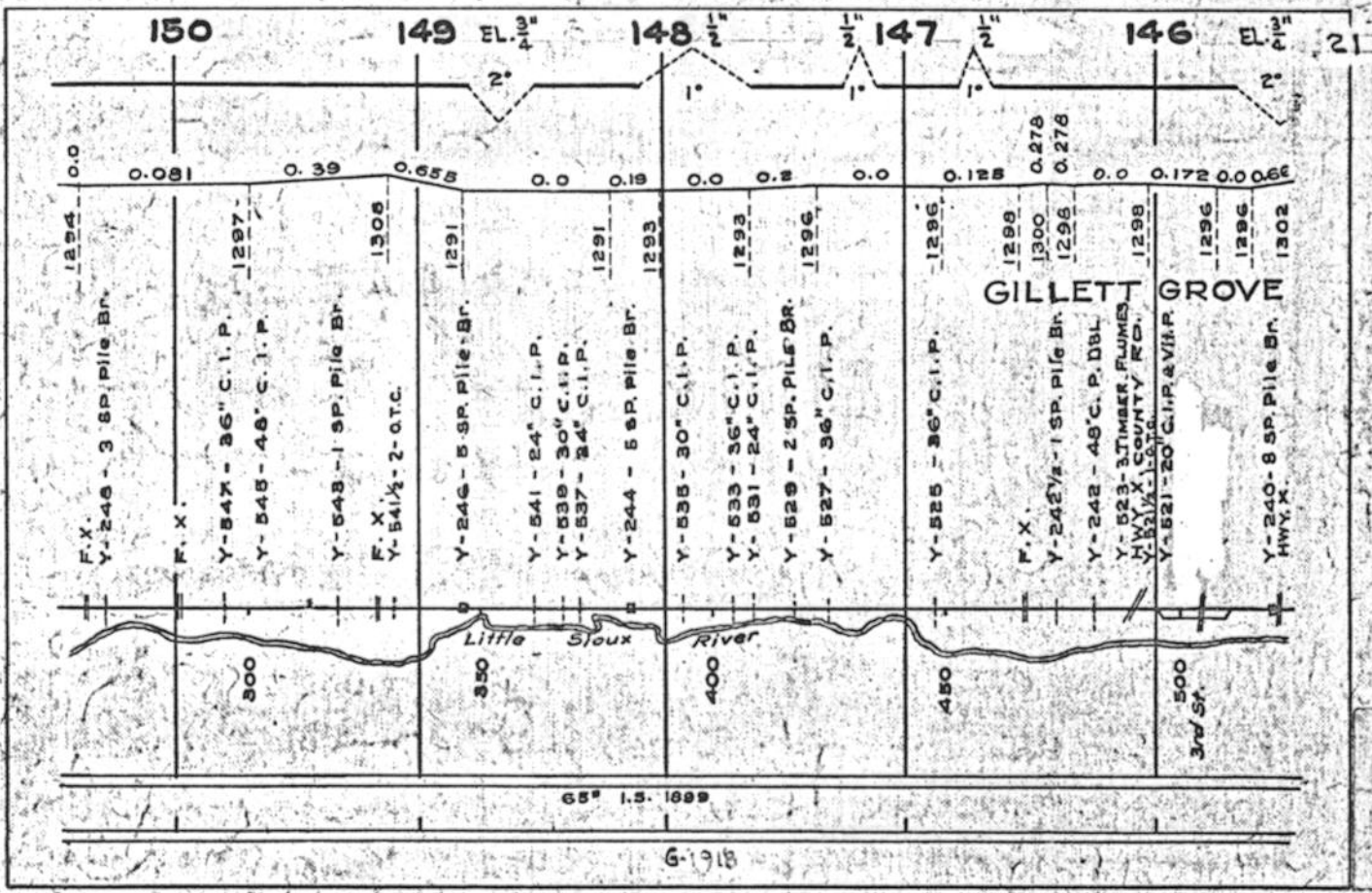
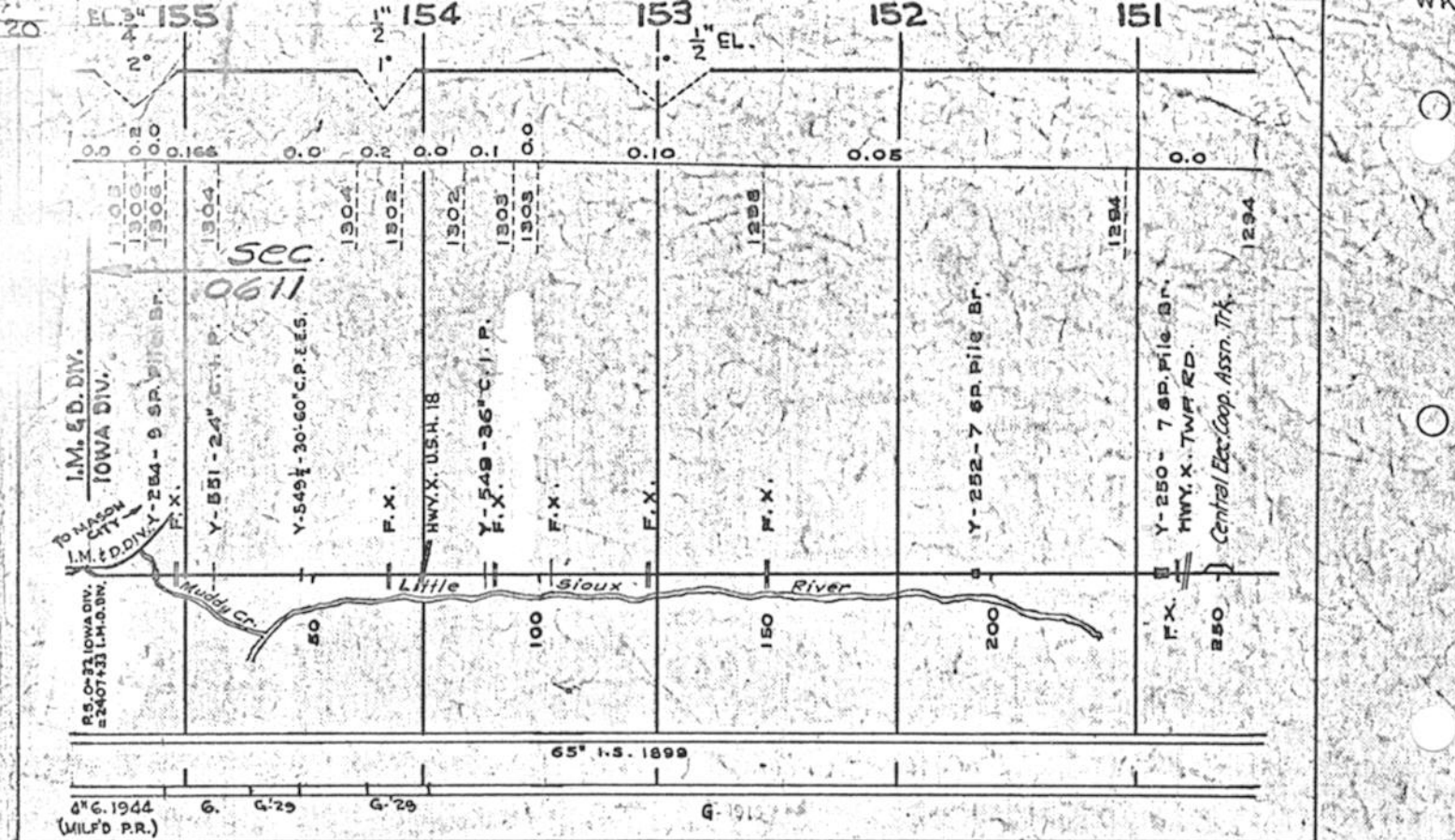


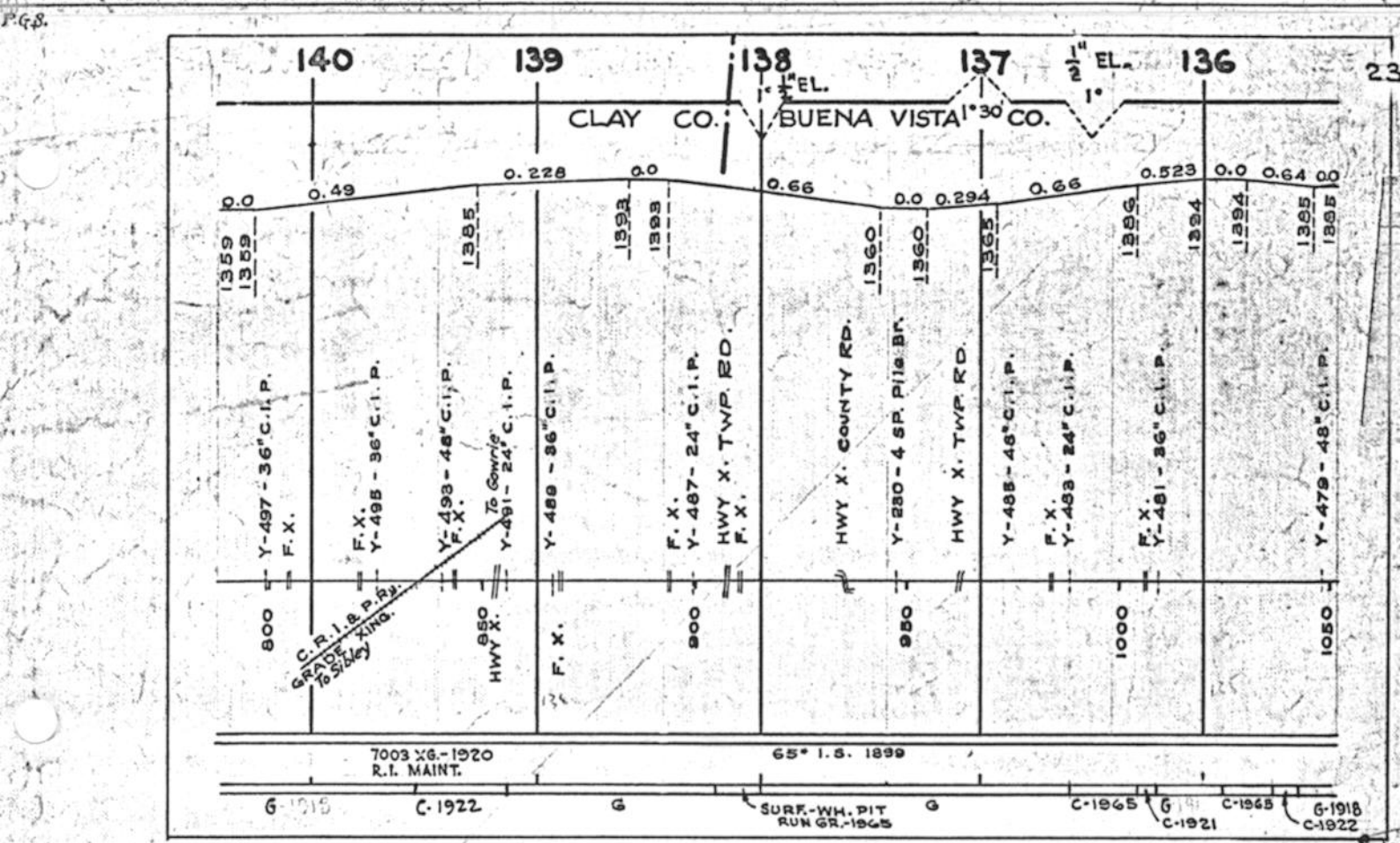
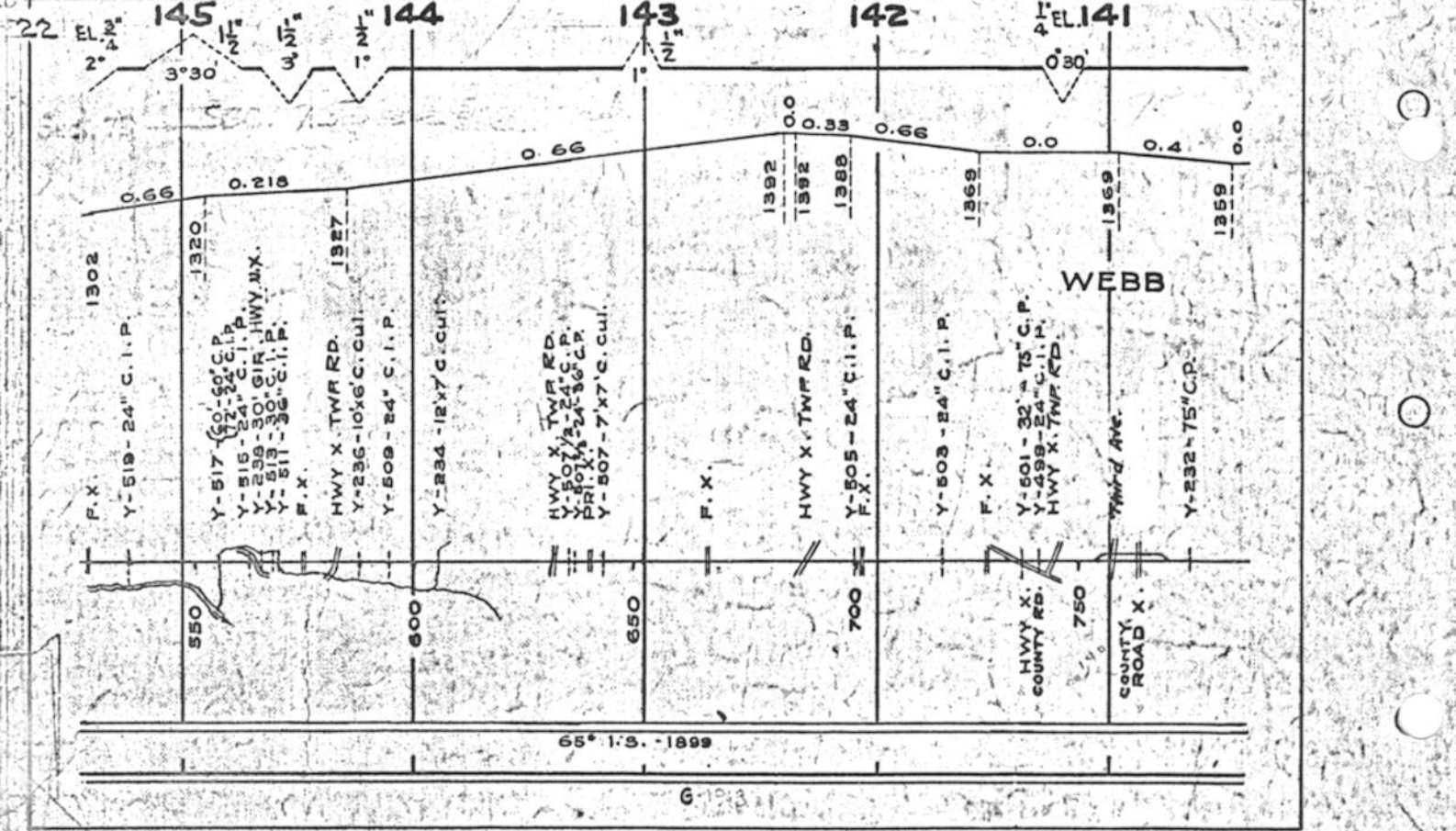
See Page 17 for Continuation of Main Line.

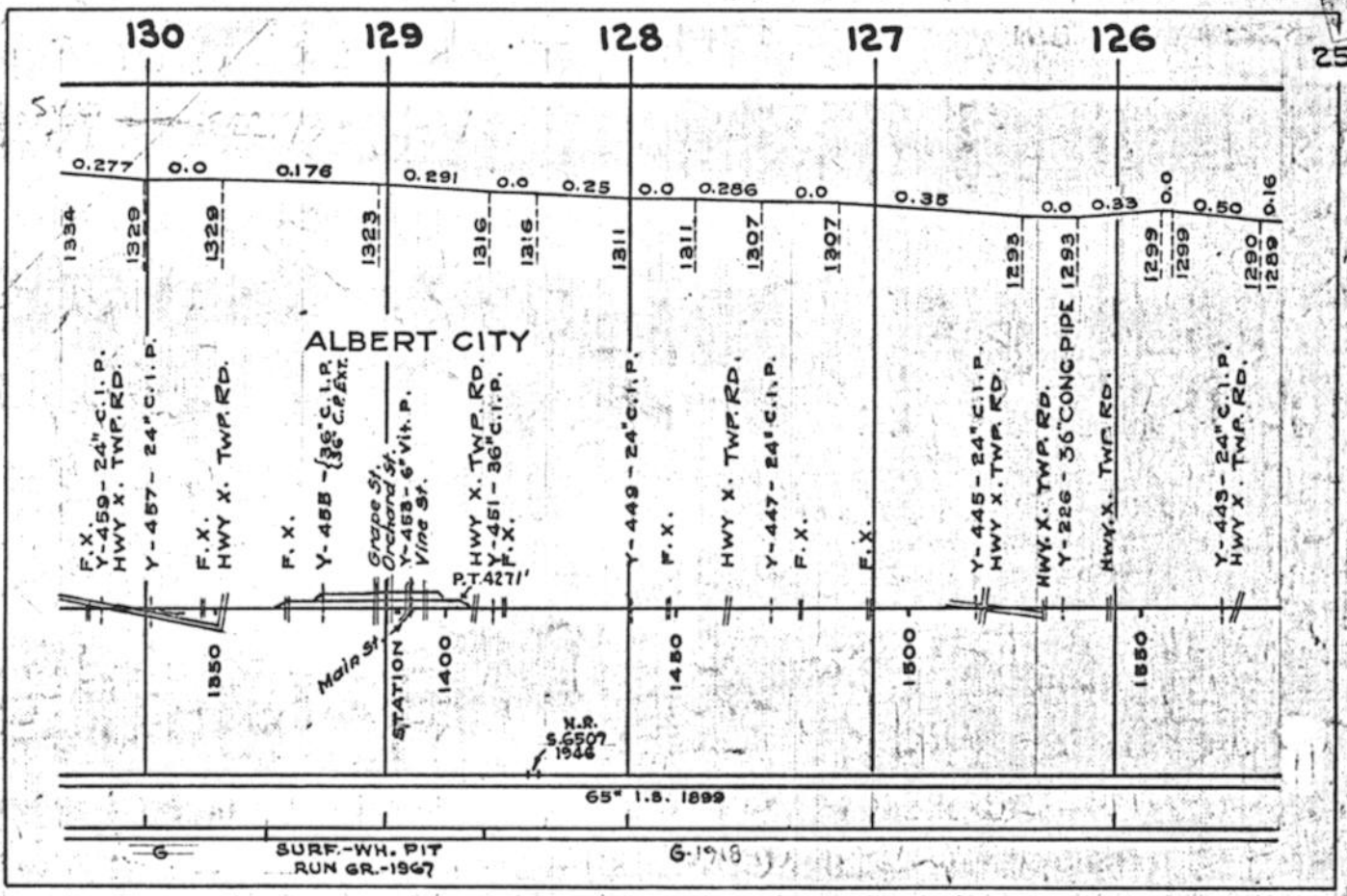
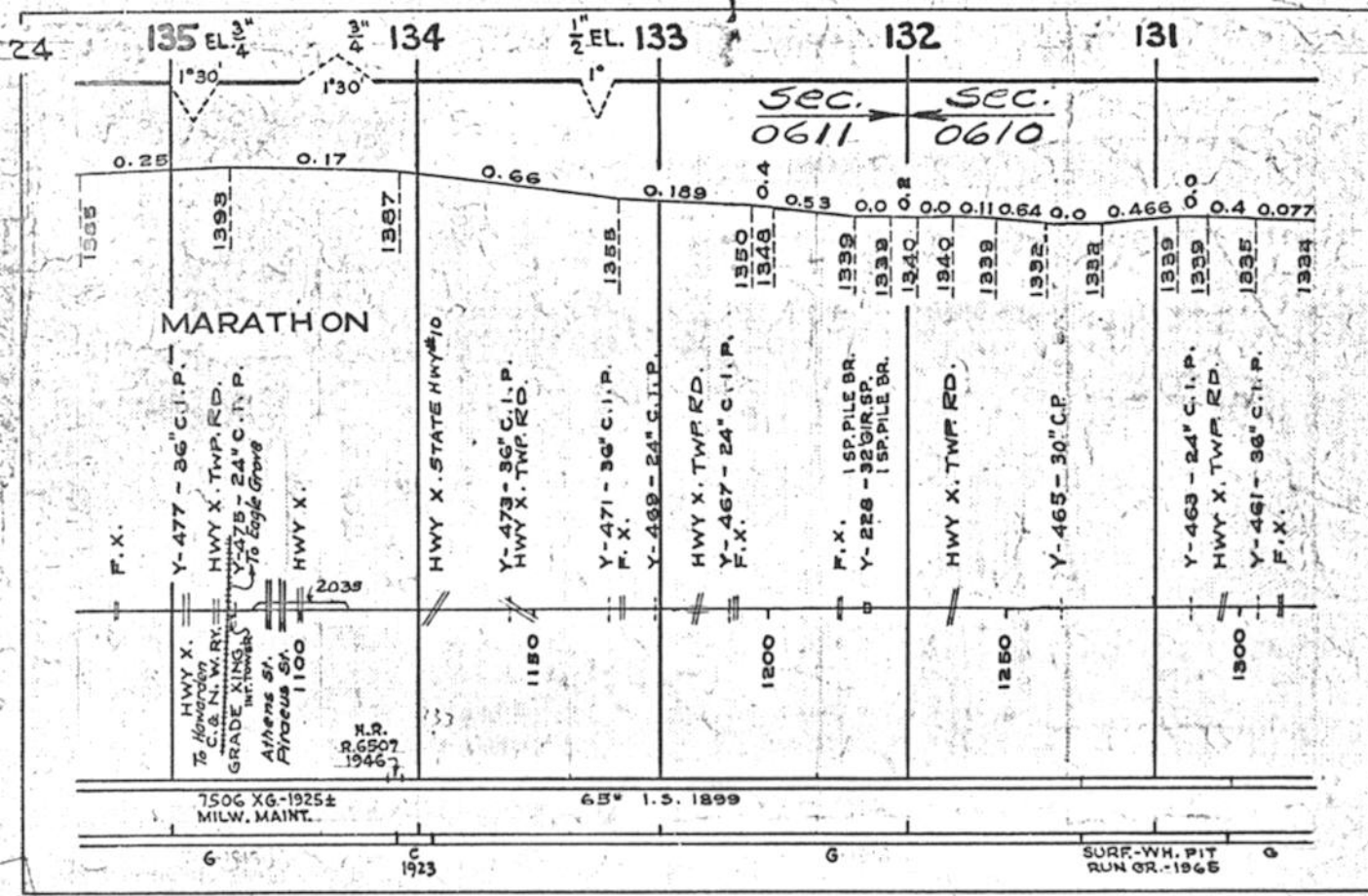


6" GRAVEL 1944 (MILFORD PIT-RUN)

MAIN LINE - DES MOINES TO SPENCER







125

124

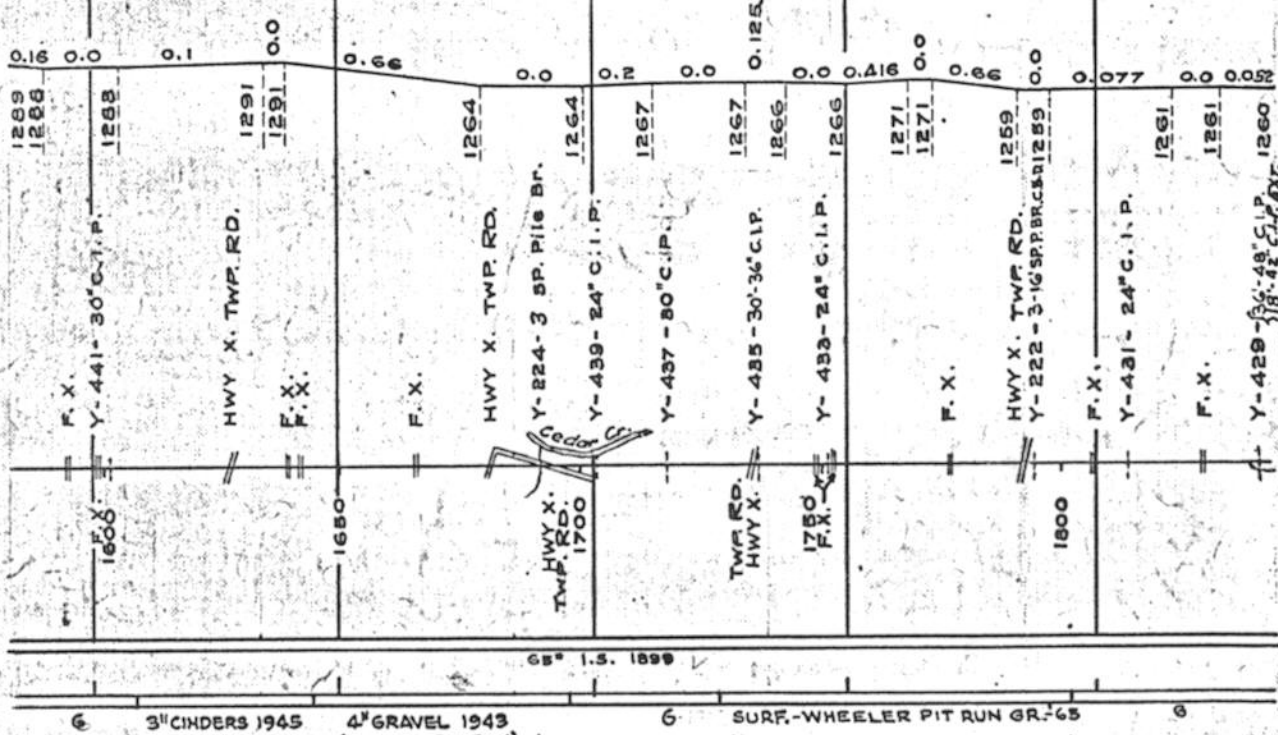
123 EL. 0' 0°15'

122

121

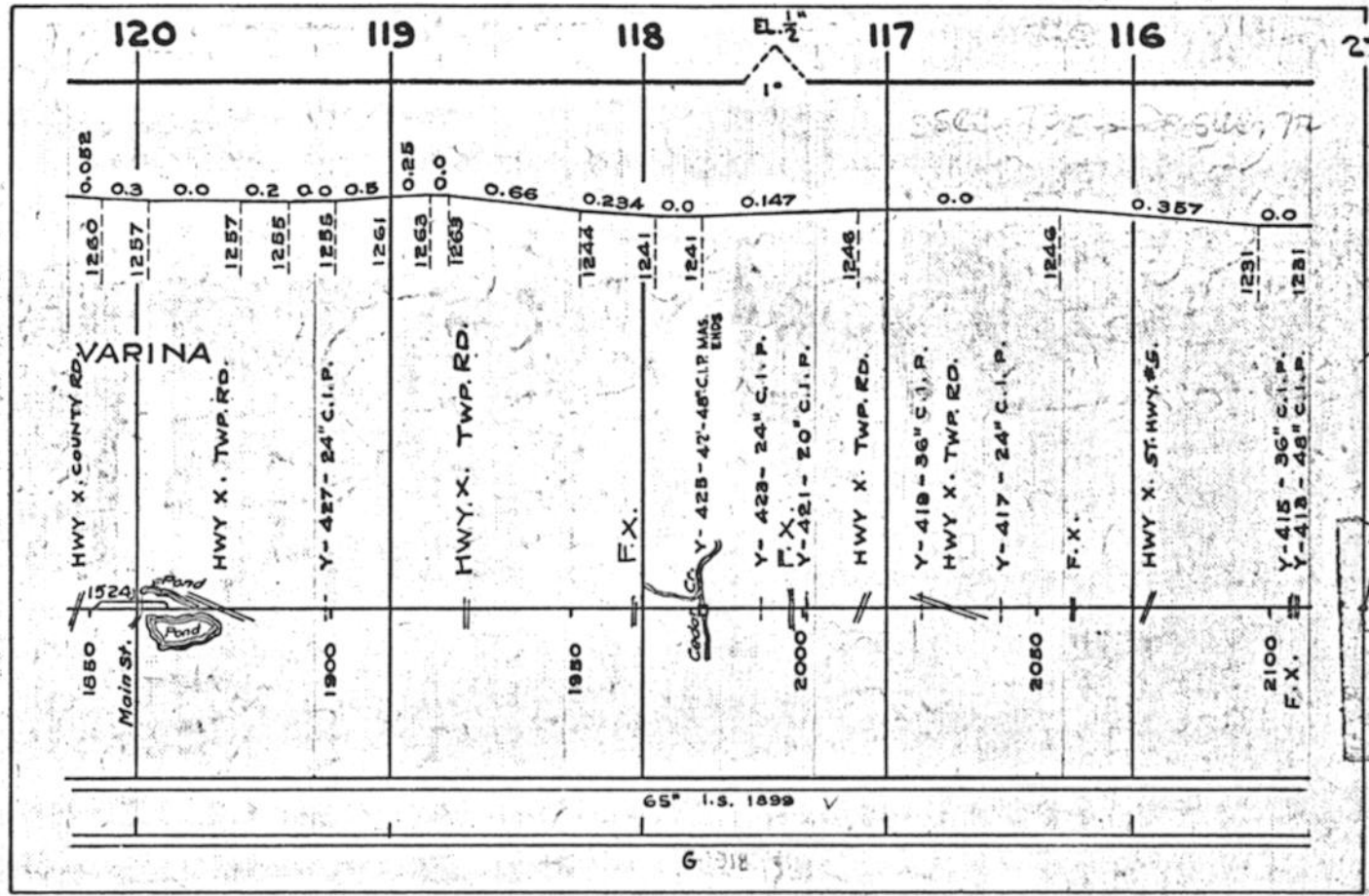
BUENA VISTA CO.

POCAHONTAS CO.



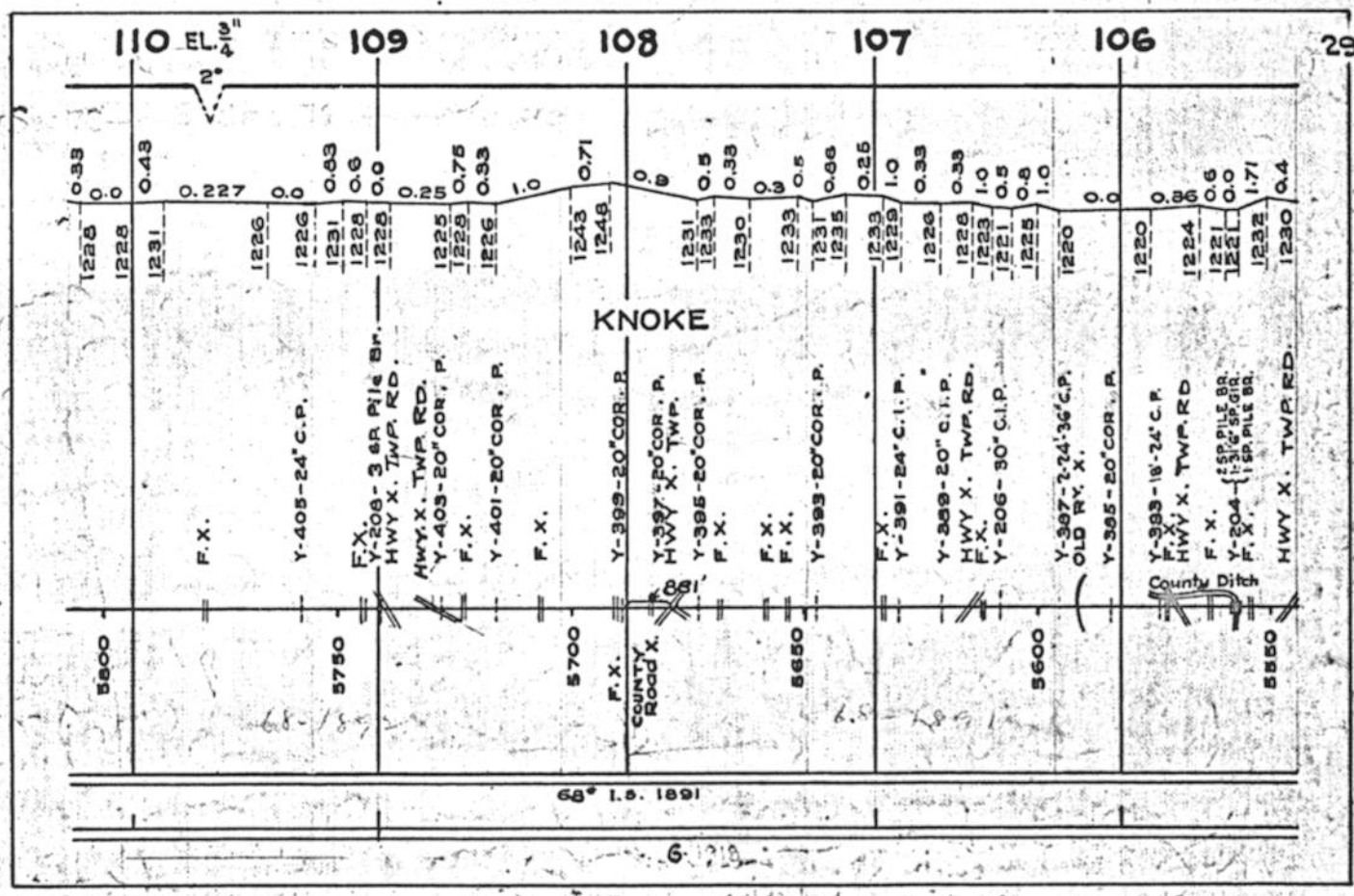
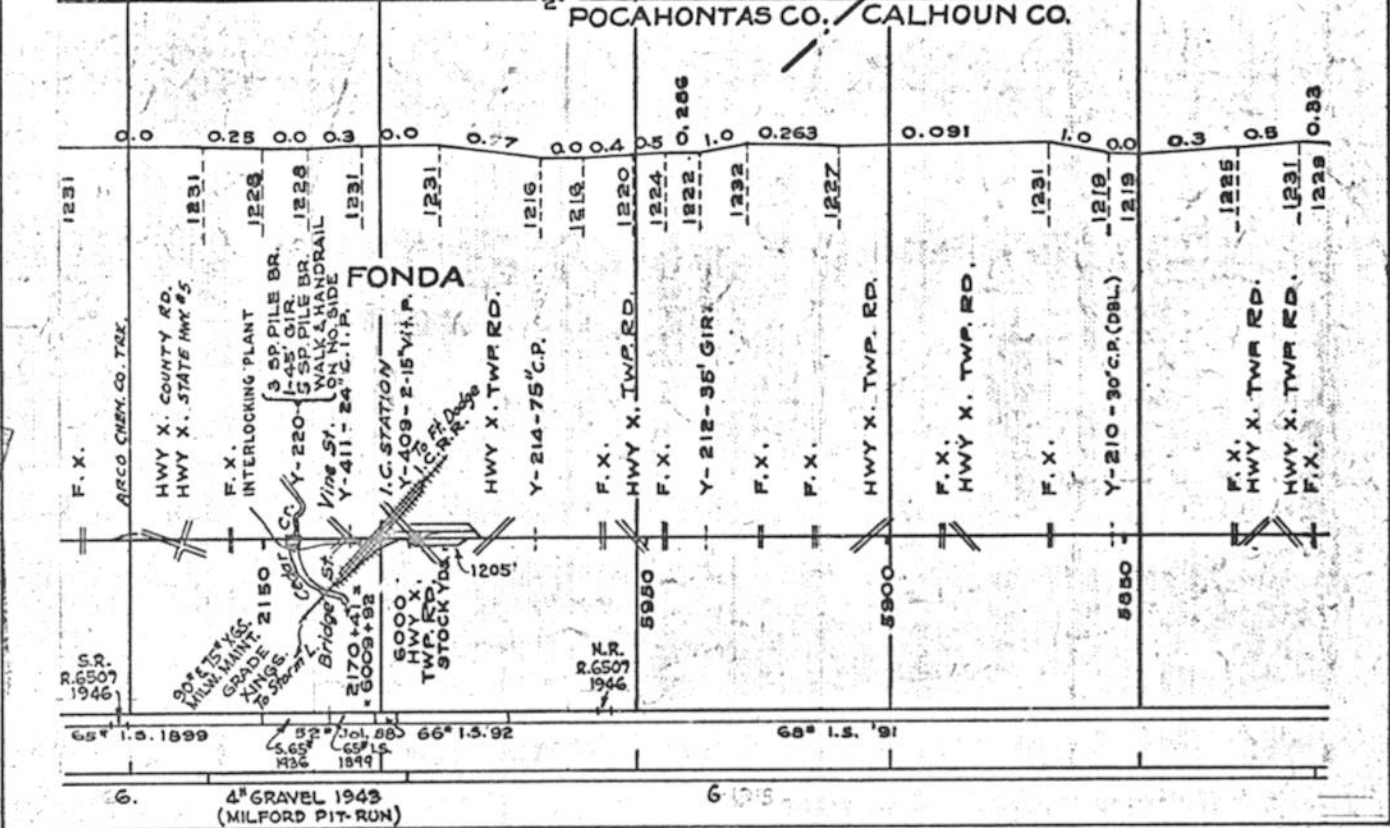
65° I.S. 1899

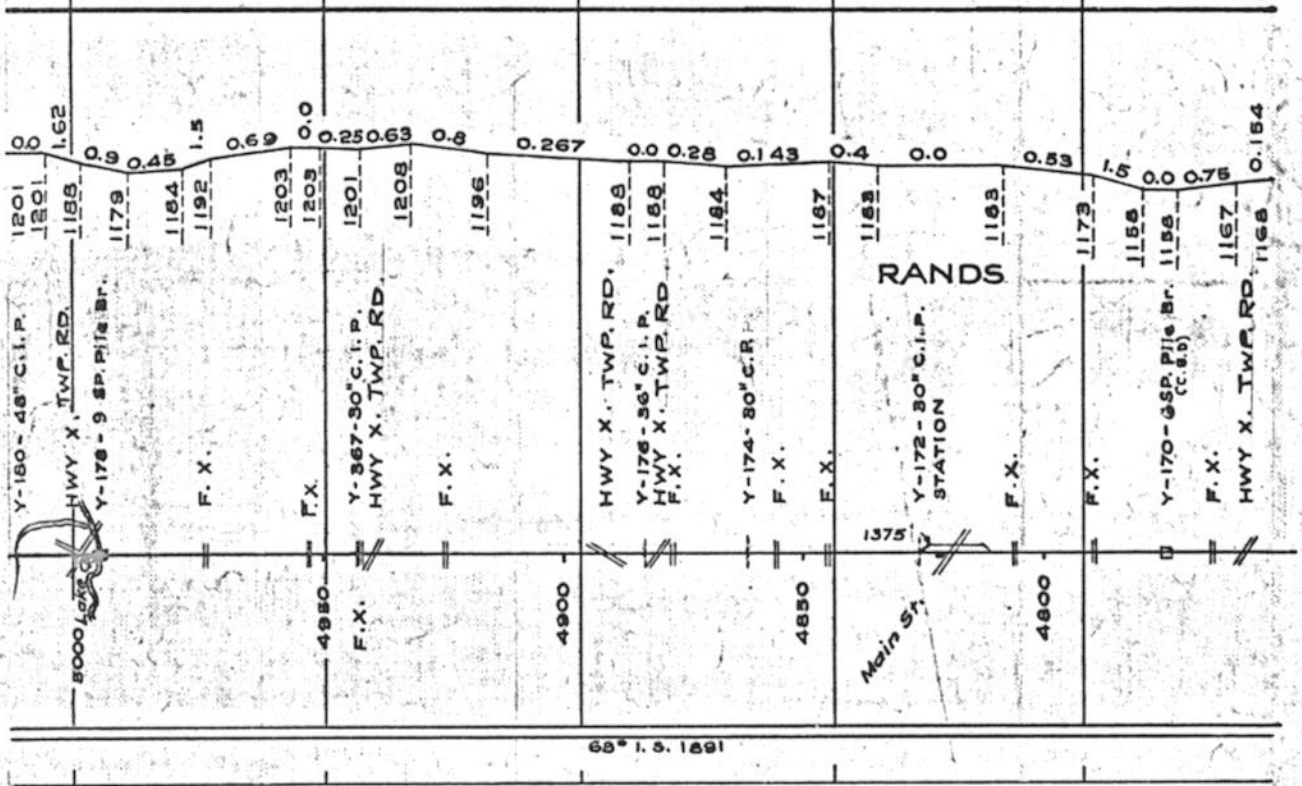
6 3" CINDERS 1945 4" GRAVEL 1943 (MILFORD PIT-RUN) 6 SURF-WHEELER PIT RUN GR-65 6



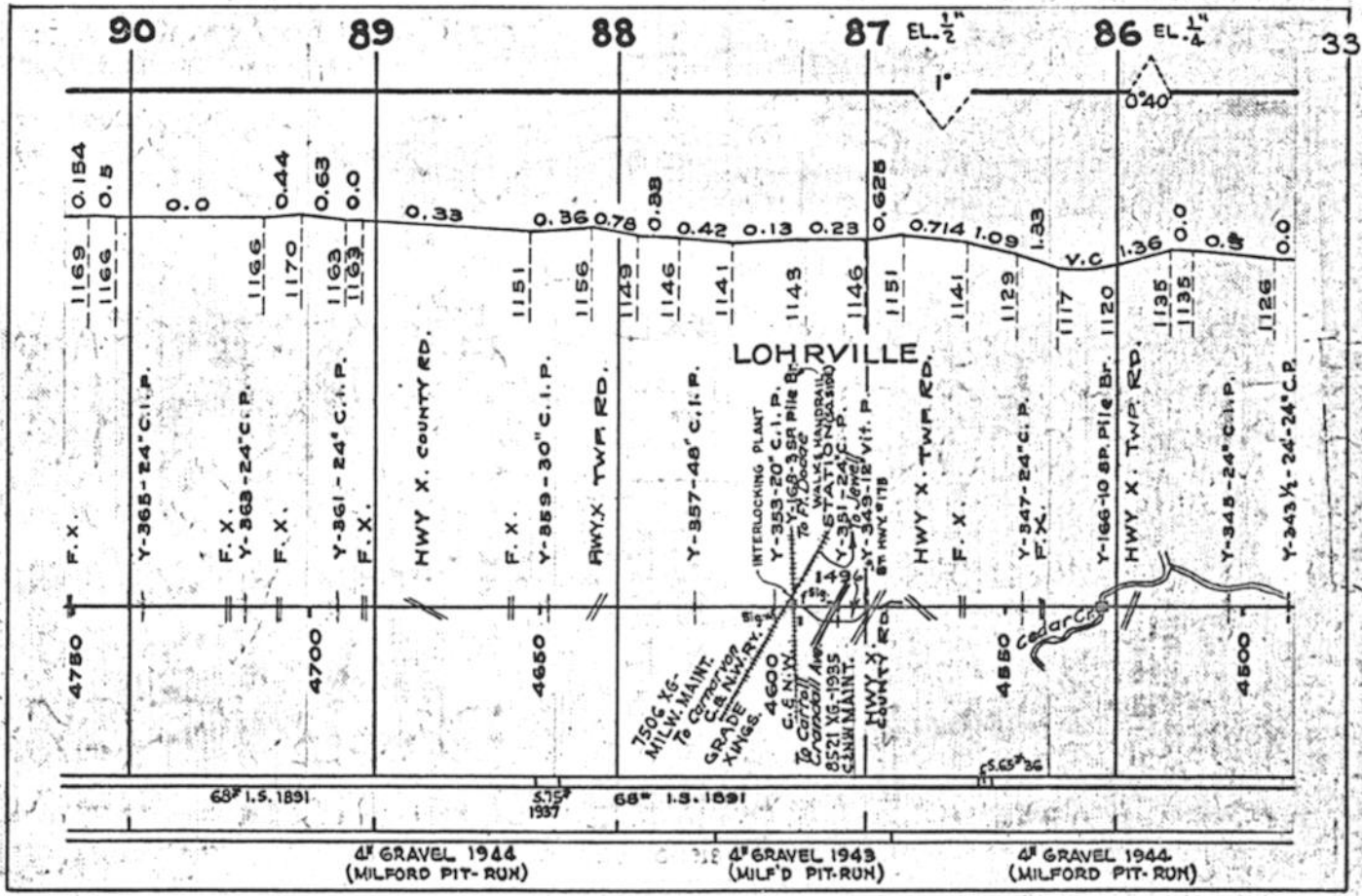
65° I.S. 1899

6





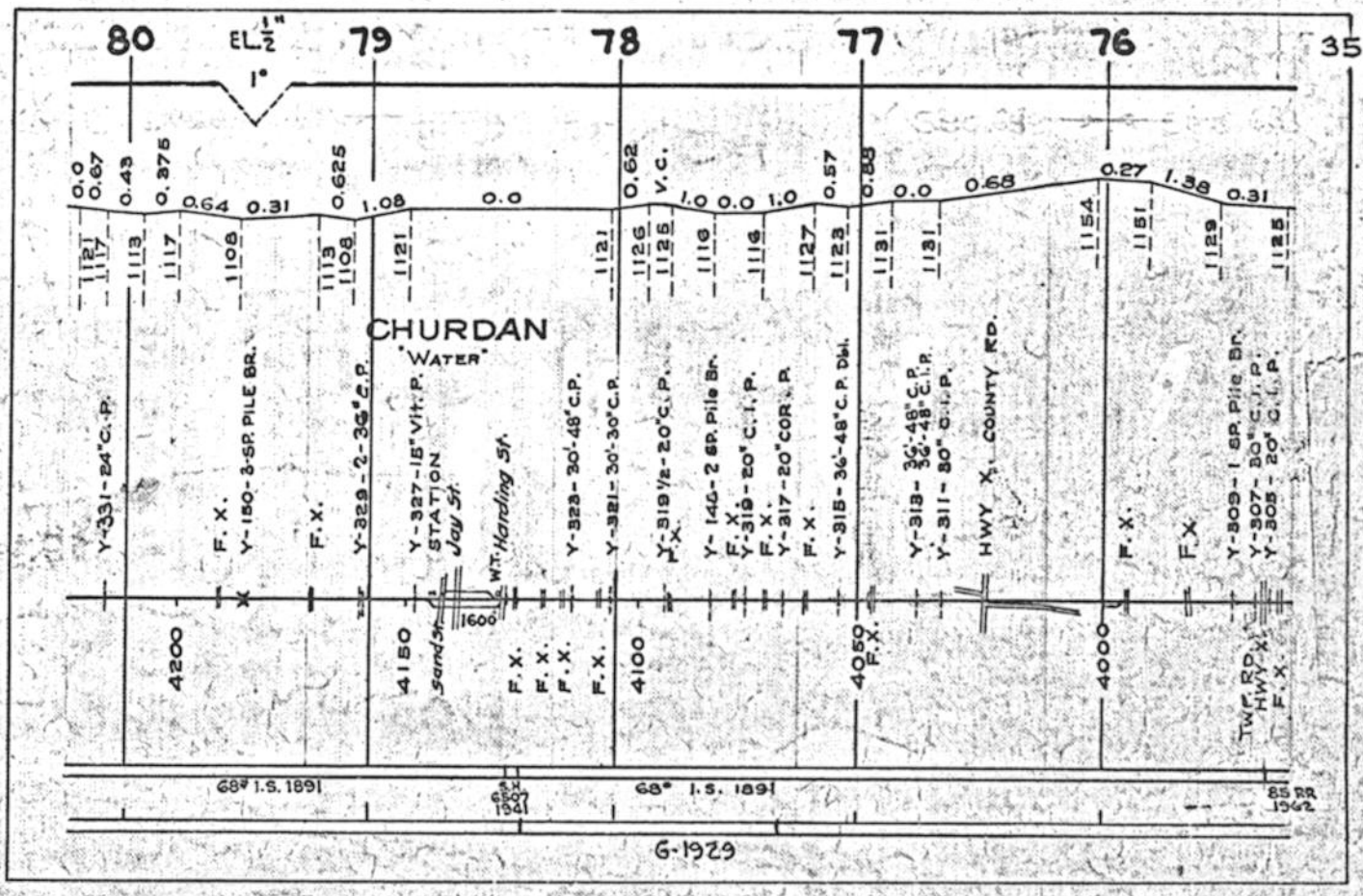
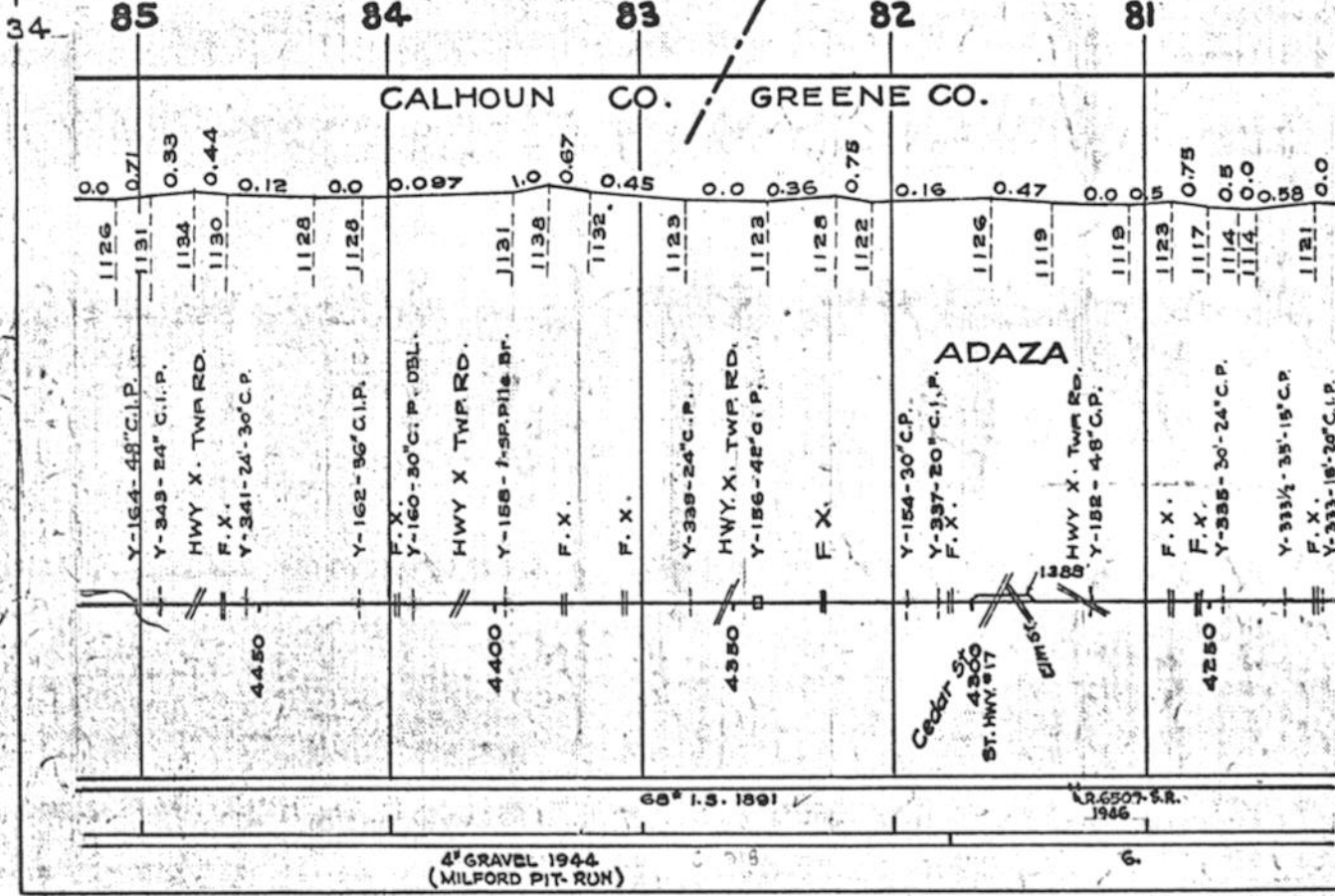
4" GRAVEL 1944 (MILFORD PIT-RUN)

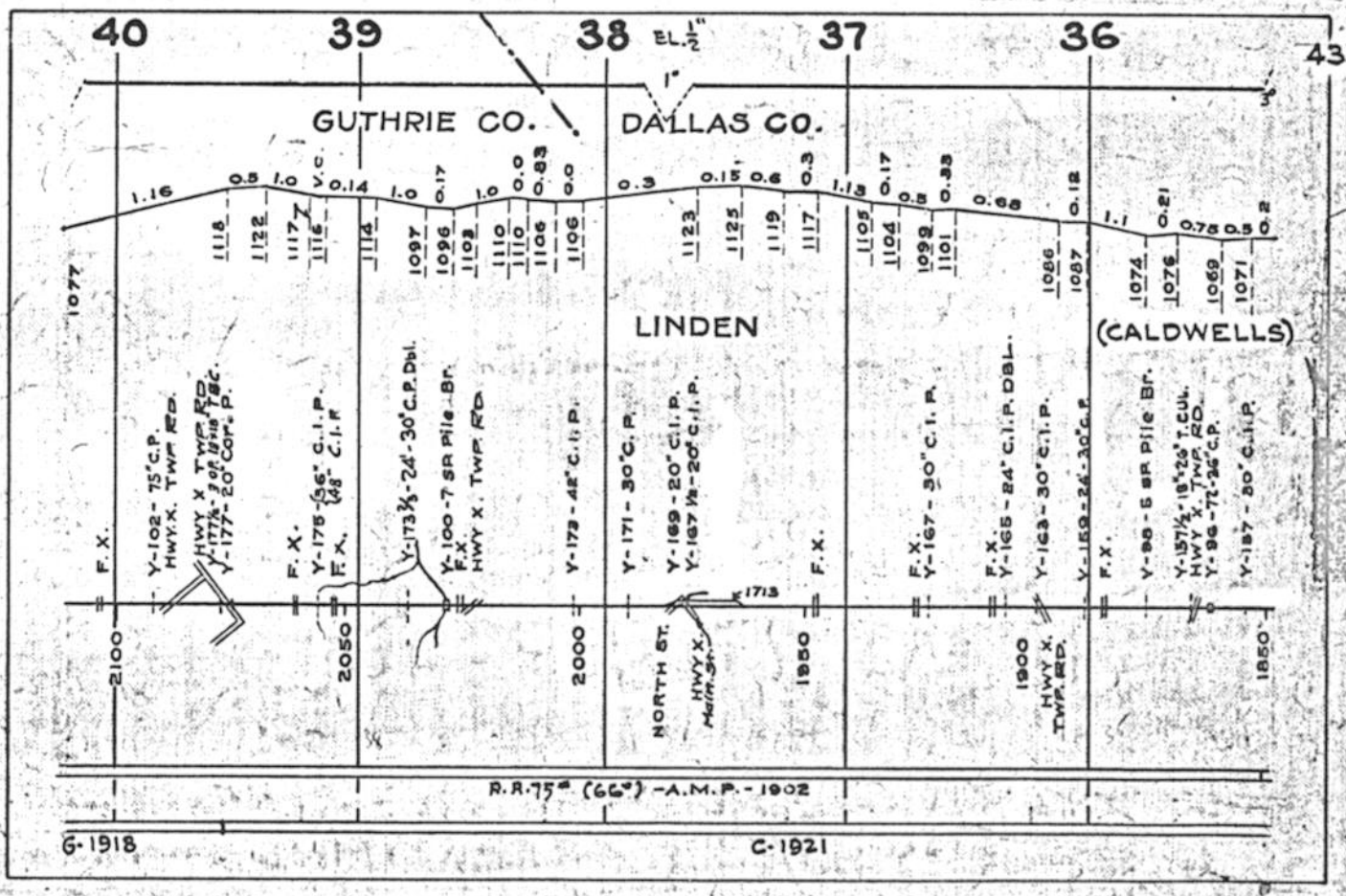
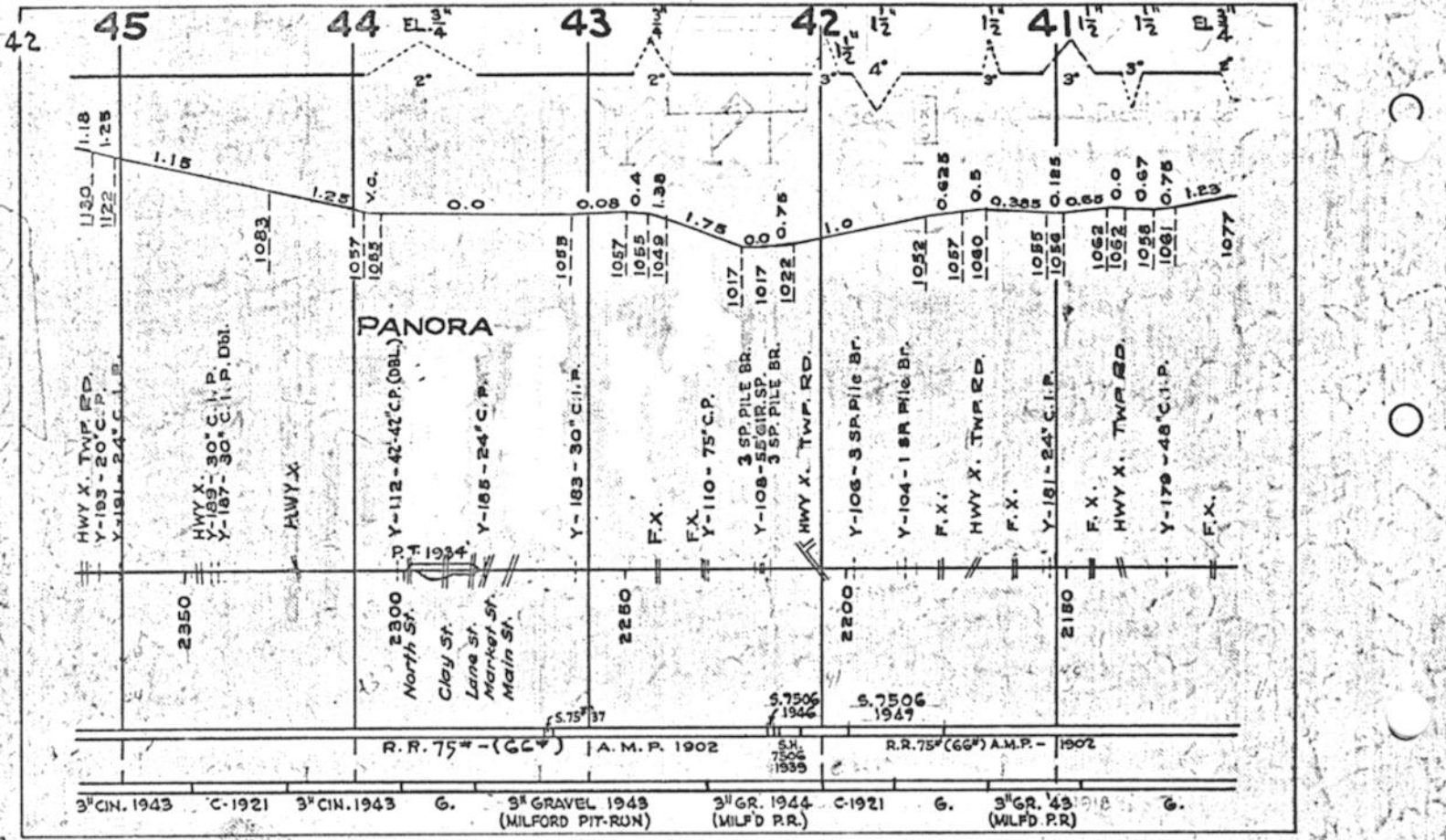


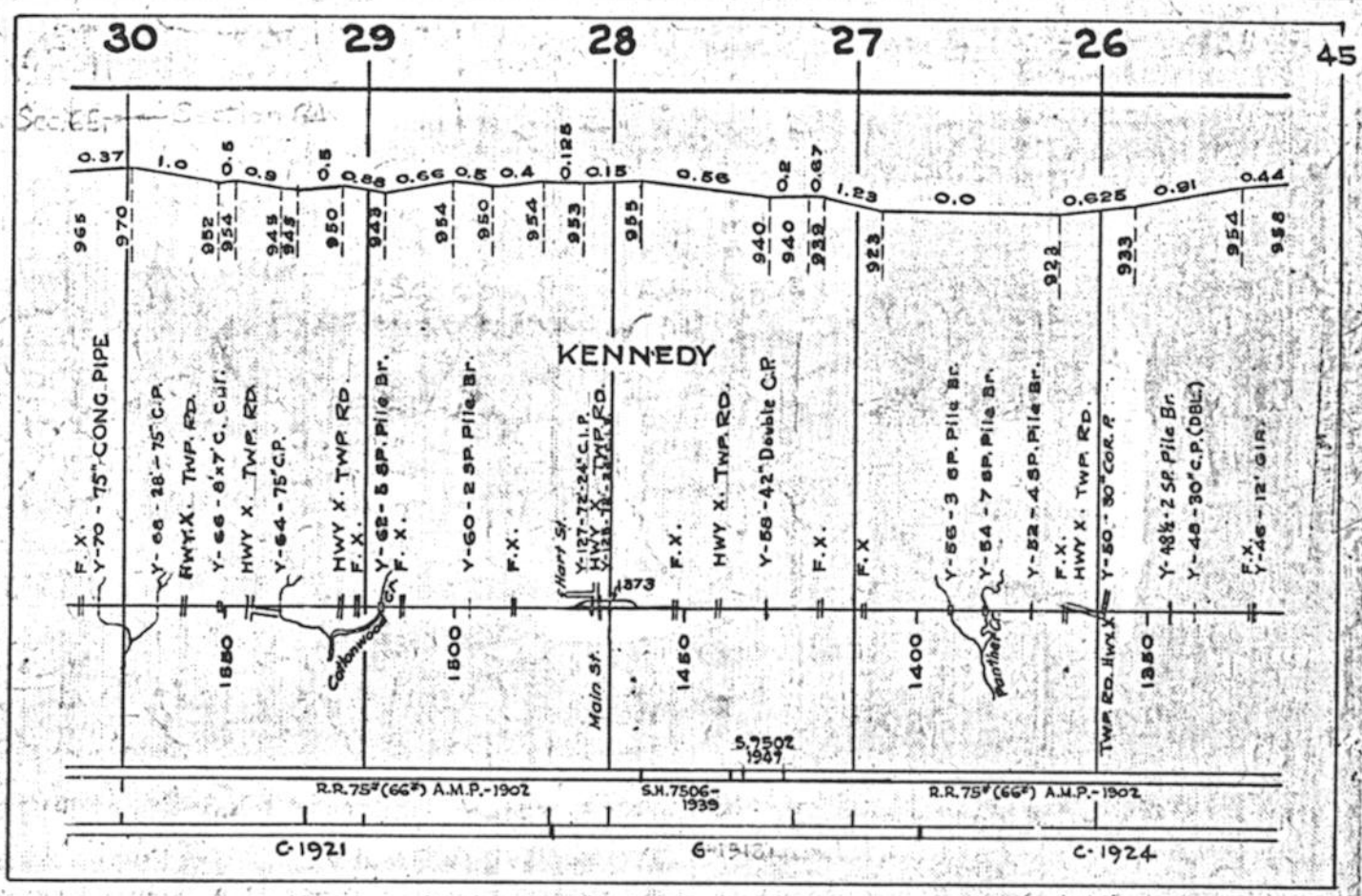
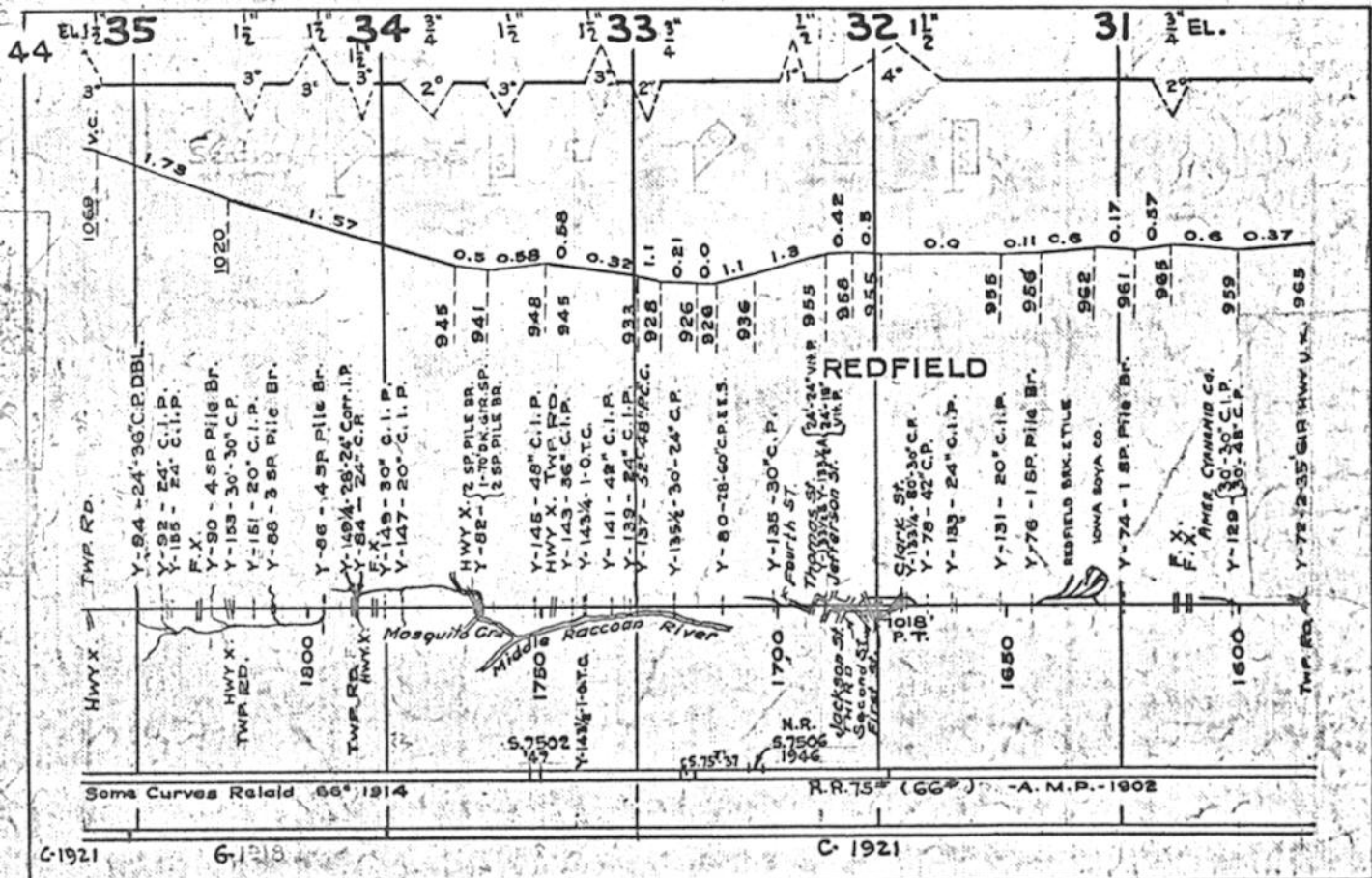
4" GRAVEL 1944 (MILFORD PIT-RUN)

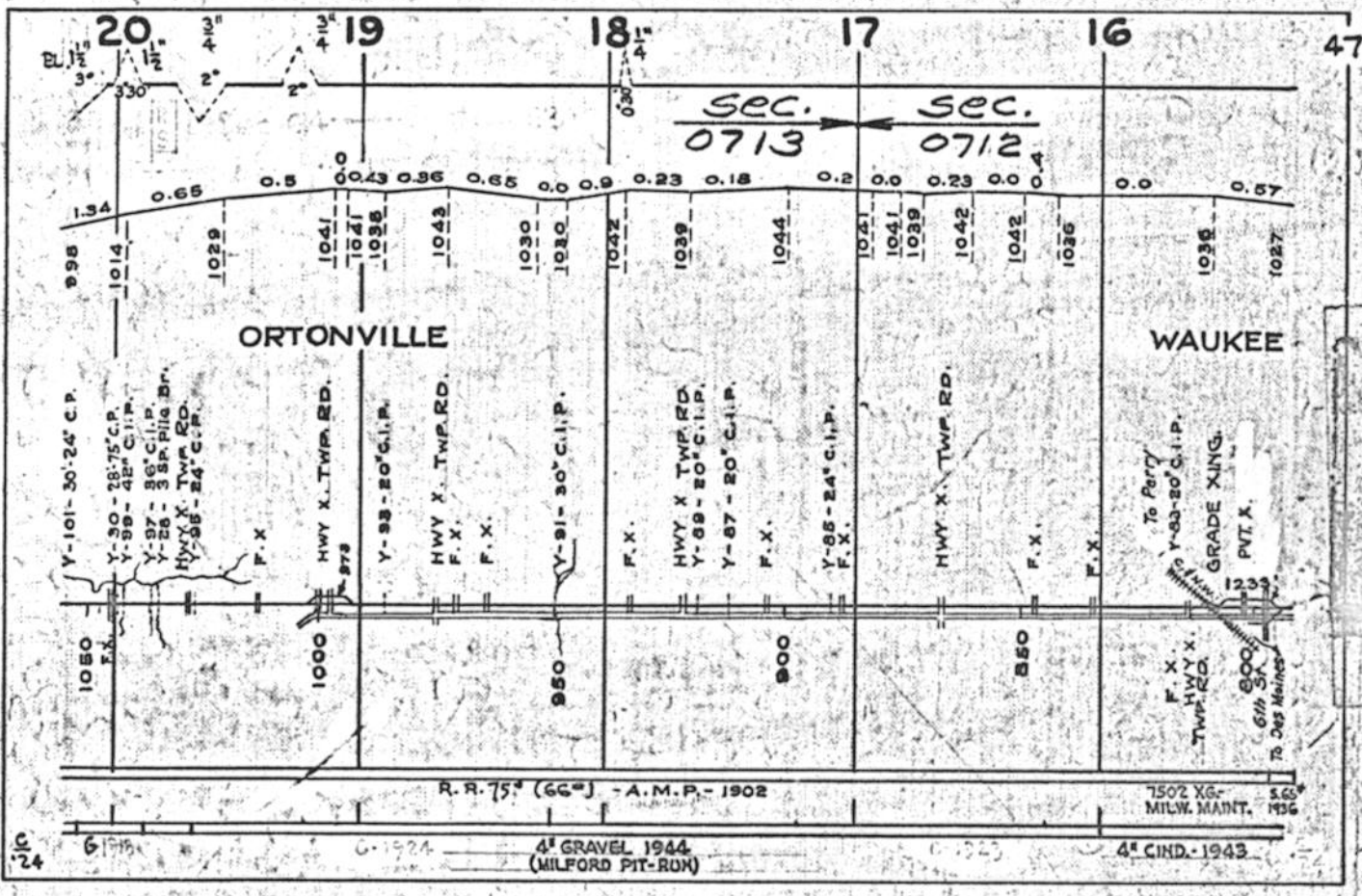
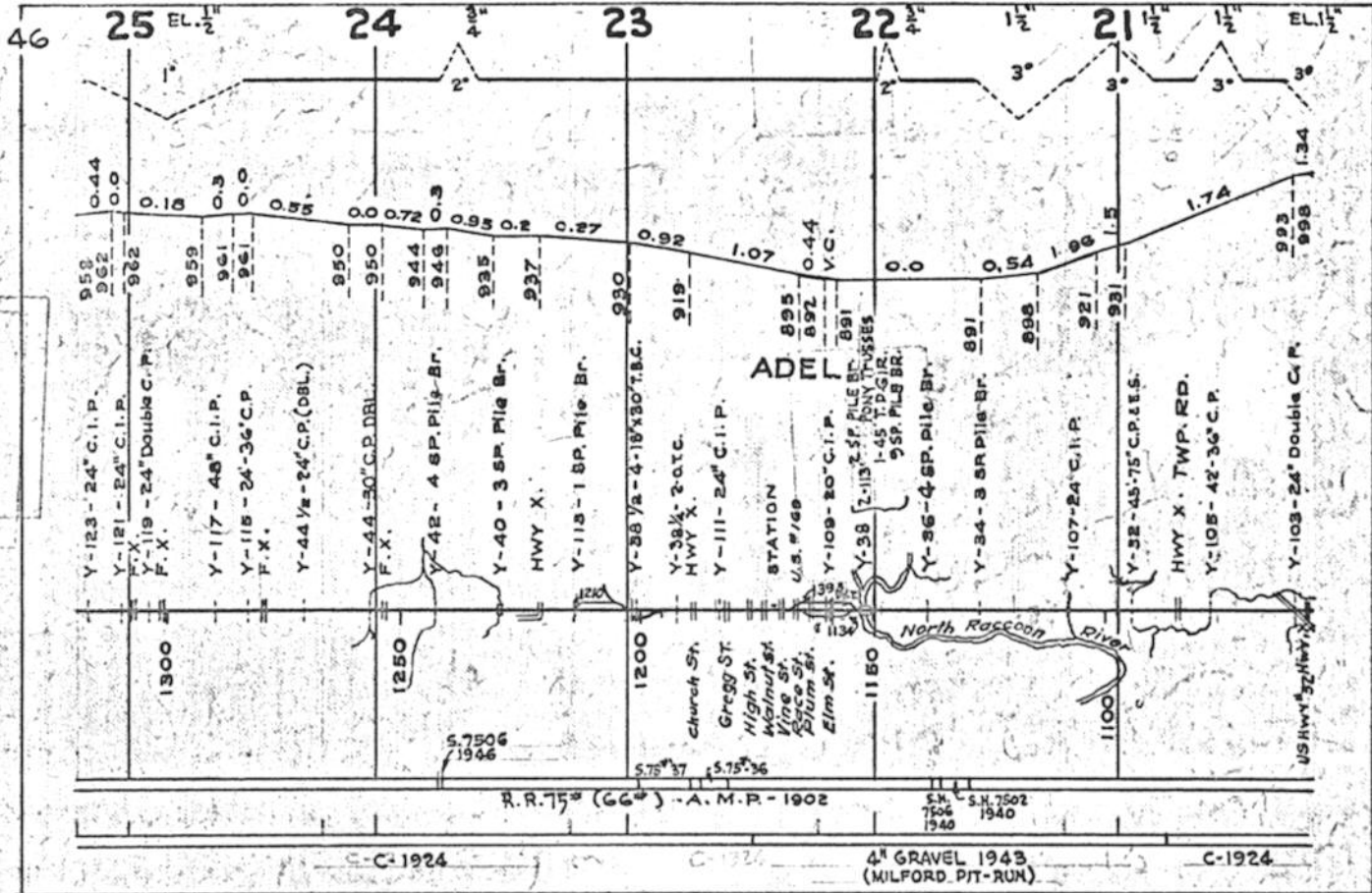
4" GRAVEL 1943 (MILF'D PIT-RUN)

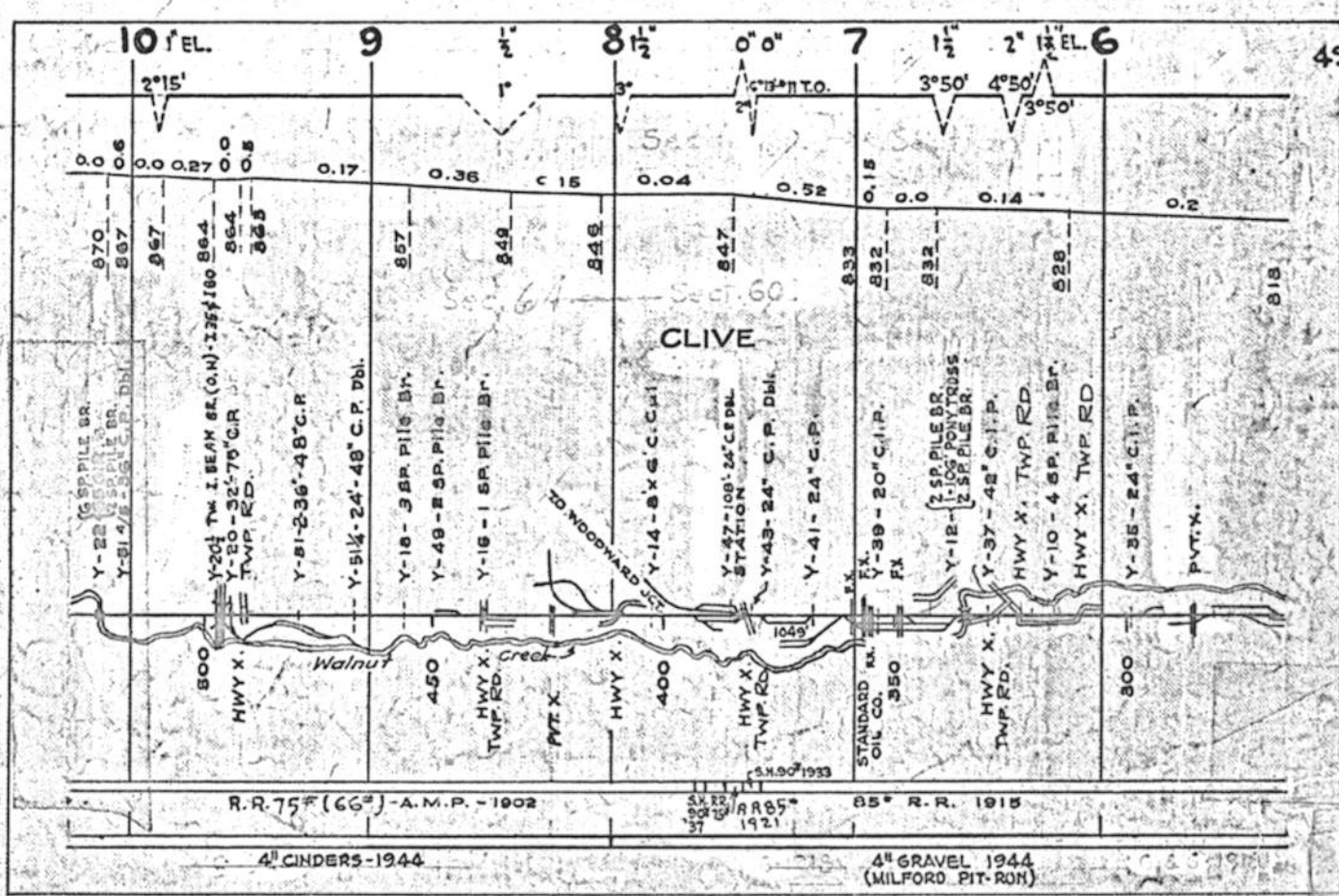
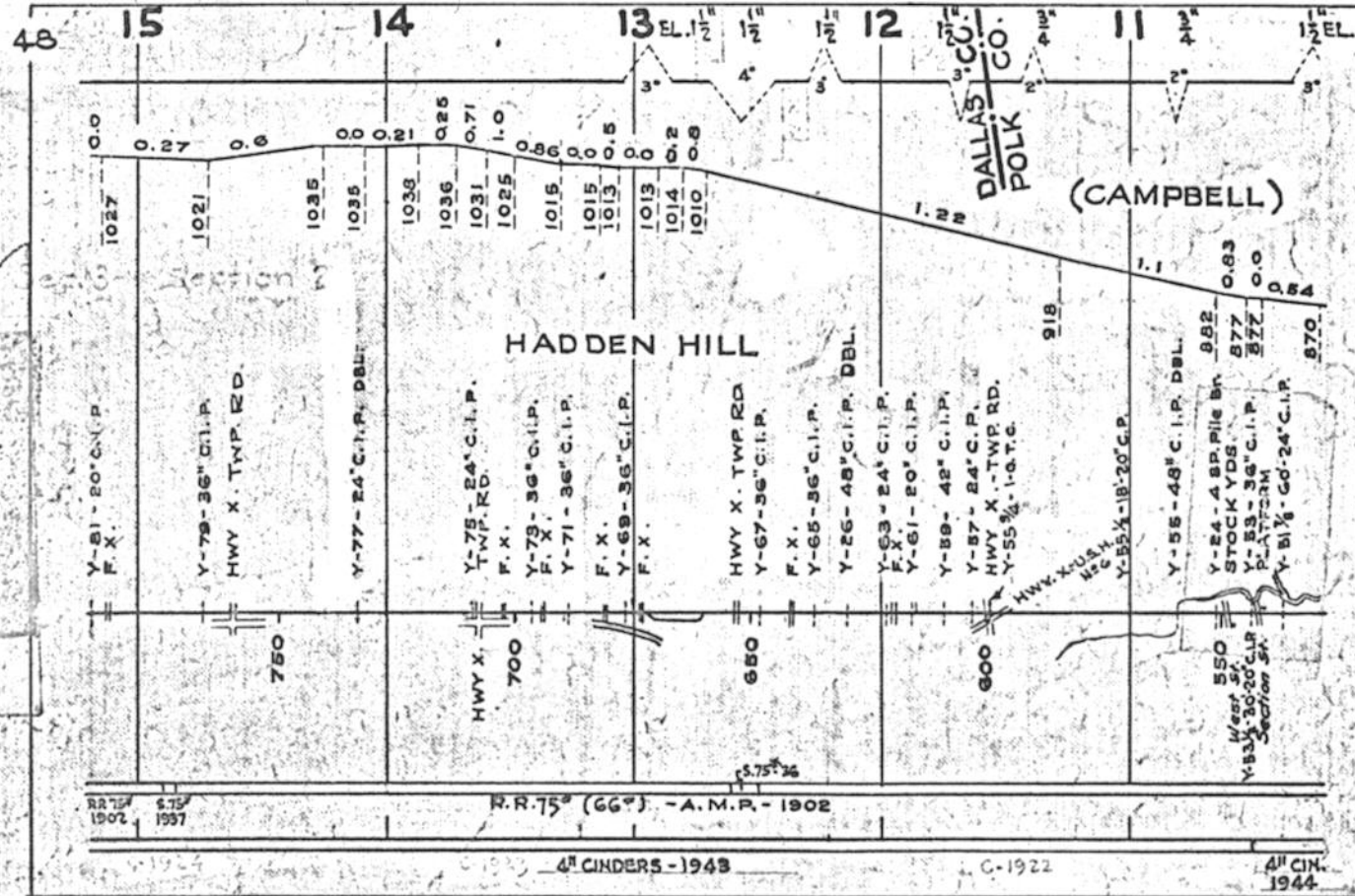
4" GRAVEL 1944 (MILFORD PIT-RUN)



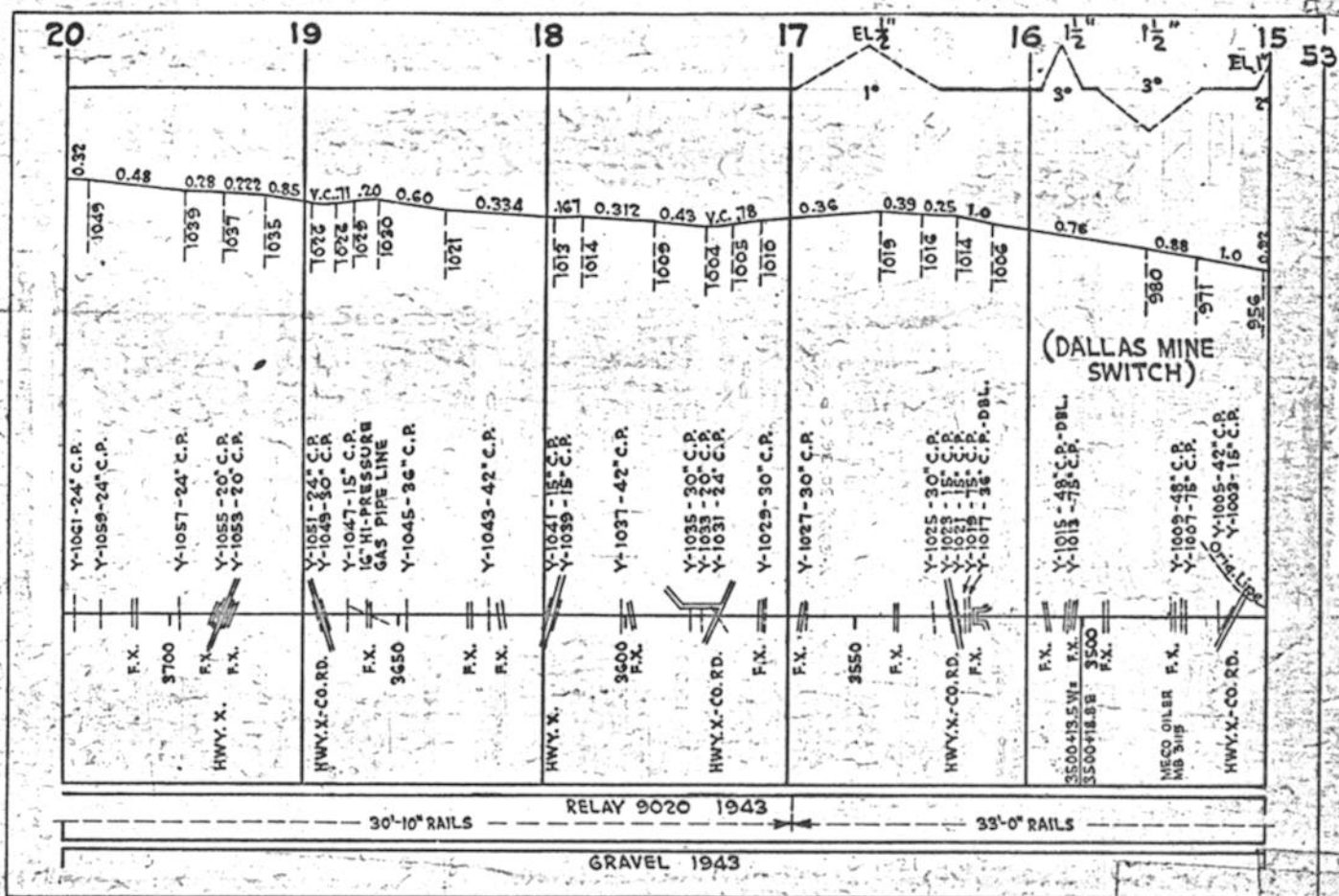
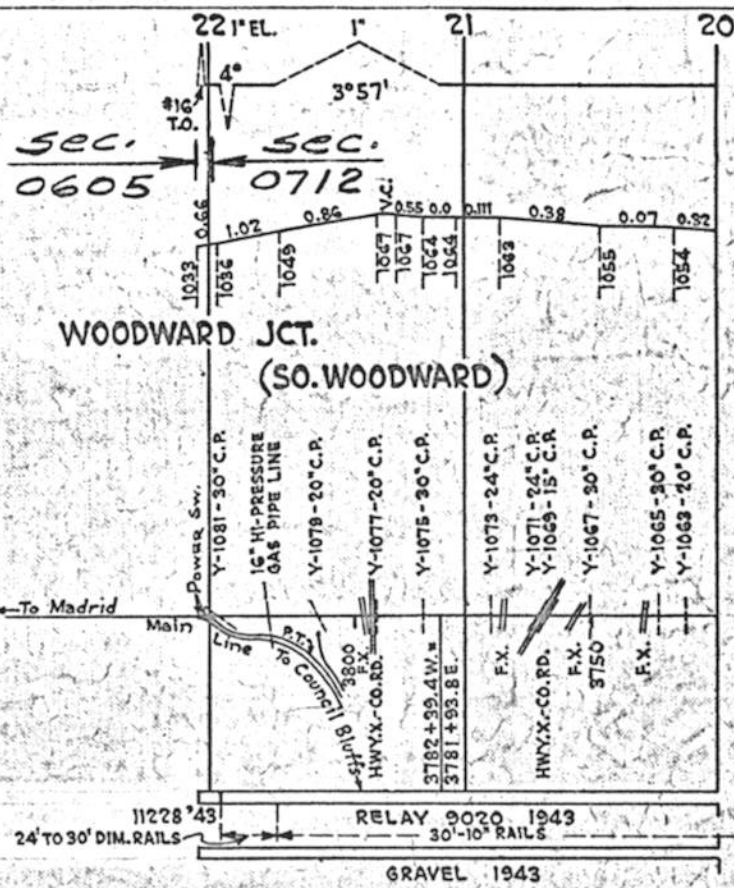




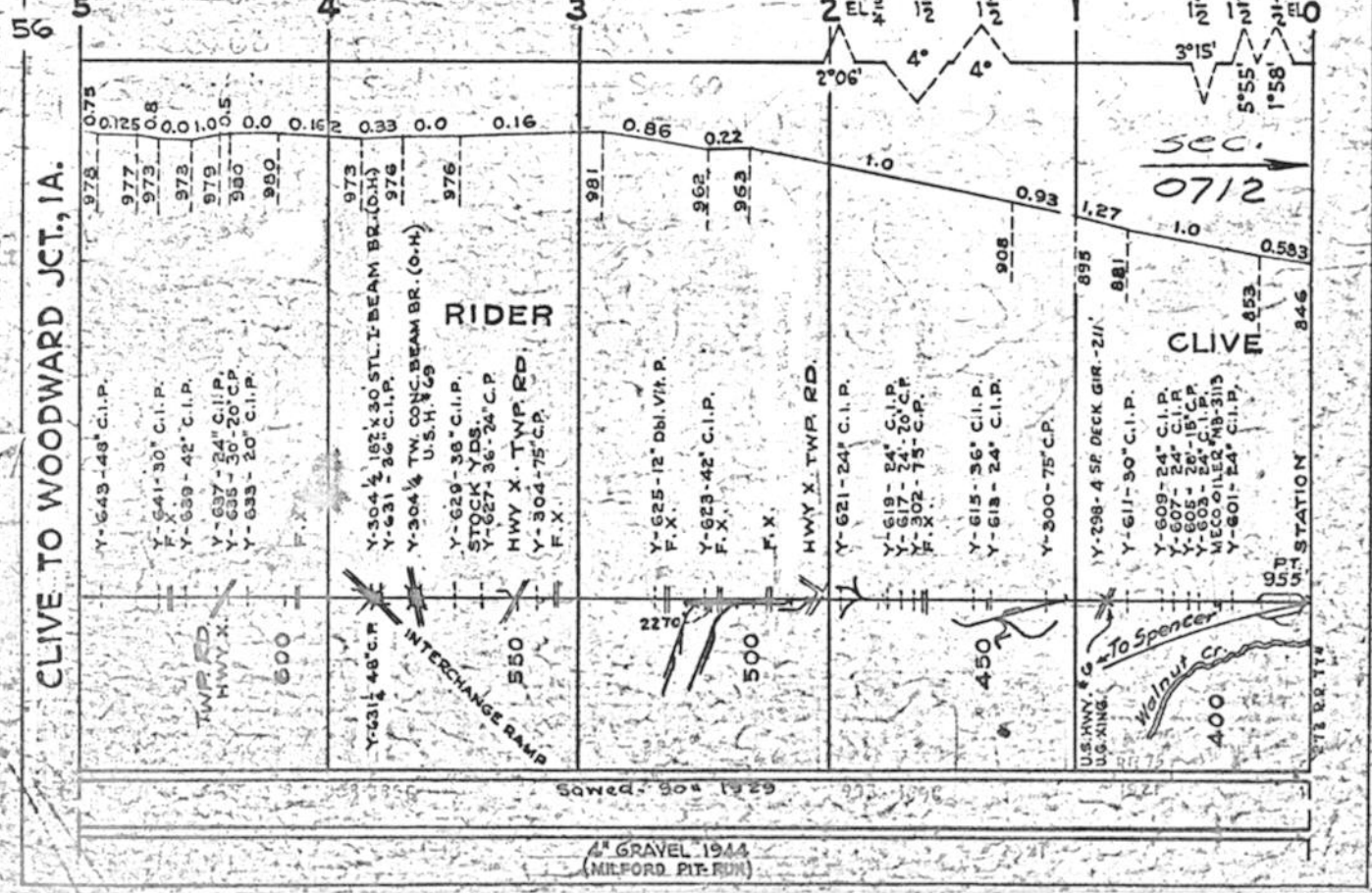




CLIVE TO WOODWARD JCT., IA.



CLIVE TO WOODWARD JCT., IA.



Sawed 904 1929

4" GRAVEL 1944
(MILFORD PIT-RUN)



