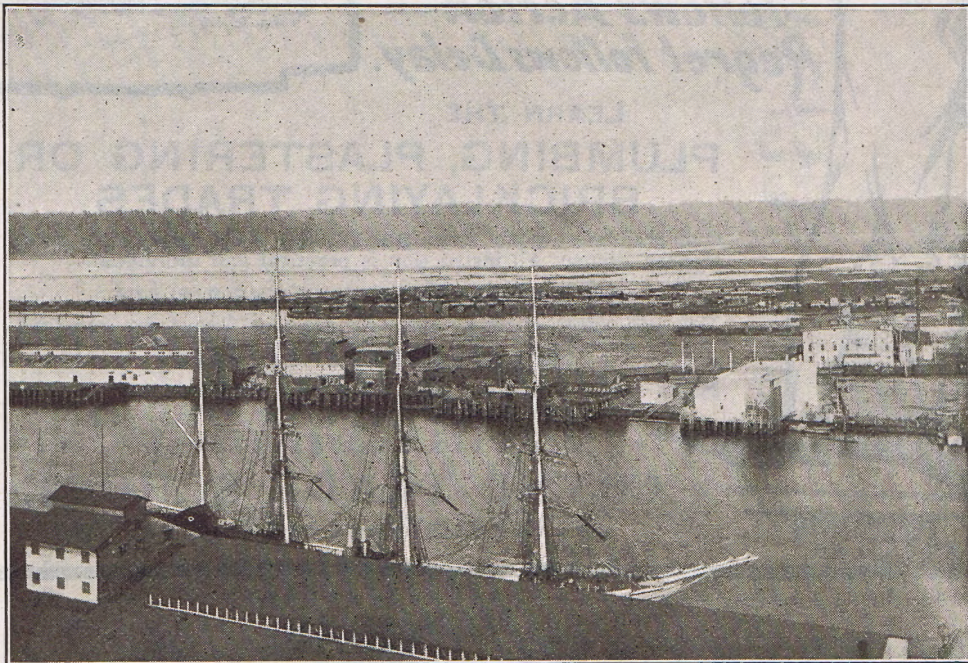


# Tacoma Traffic Center Pacific Northwest



TACOMA TIDEFLATS, SHOWING WATER FRONTAGE

Where Northern Pacific, Union Pacific and Chicago, Milwaukee and St. Paul railroads own hundreds of acres and are spending millions of dollars on terminals.

## **Tacoma Terminals Chicago, Milwaukee and St. Paul Railroad Among Largest in United States**

“The plans of the Chicago, Milwaukee and St. Paul provide for greater development in Tacoma than the people have any idea of. It is here that the business of the road will be done. The headquarters of the company’s ocean steamship business will be in Tacoma and this city will have the road’s largest western terminals.”

This statement is made by William P. Reynolds, attorney for the Chicago, Milwaukee and St. Paul railroad, who adds: “A channel 200 feet wide is to be dredged of sufficient depth to float the largest ocean steamers. The mammoth warehouses which will be required to handle the company’s ocean steamship business will be located on the east side of this waterway.”

The Northern Pacific and Tacoma Eastern railroads, which own extensive terminals here, have already spent millions, and the former is completing plans for a \$750,000 station. The Chicago, Milwaukee and St. Paul and Union Pacific railroads have purchased hundreds of acres in the heart of Tacoma for terminals which are being improved. These roads promise to have trains running into Tacoma by 1909. The Portland and Seattle, Port Townsend Southern, Great Northern, North Coast, Canadian Pacific, and Chicago and Northwestern are building their lines here, or are completing arrangements to do so.

The Seattle *Sunday Times*, of February 10, 1907, says these seven additional railroads are making Tacoma their chief Pacific Coast terminal point, “Because Tacoma is the gateway to the Orient; the gateway to Alaska; the outlet for the millions of bushels of grain raised in the Inland Empire—the greatest granary in the world; the outlet for the products manufactured from the trees of the vast primeval forests thereabout as well as the immense deposits of rich minerals taken from the mountains rising on all sides; and not least, because of its location at the head of ocean navigation on Puget Sound, having the finest deep water harbor in the world and unlimited facilities for railroad terminals and manufacturing sites.”

Tacoma has the best rail and ocean terminal facilities on the Pacific Coast, with steamship lines to the Orient and Liverpool, and Glasgow by way of the Suez Canal and Mediterranean; to Hamburg by way of Mexican Central and South American ports; to Alaska, San Francisco, Honolulu and New York.

**TO MANUFACTURERS, INVESTORS, JOBBERS, MERCHANTS, SKILLED MECHANICS,  
TACOMA OFFERS UNRIVALED OPPORTUNITIES**

FOR FURTHER INFORMATION AND ILLUSTRATED LITERATURE, ADDRESS SECRETARY

**Chamber of Commerce and Board of Trade, Tacoma, Wash.**